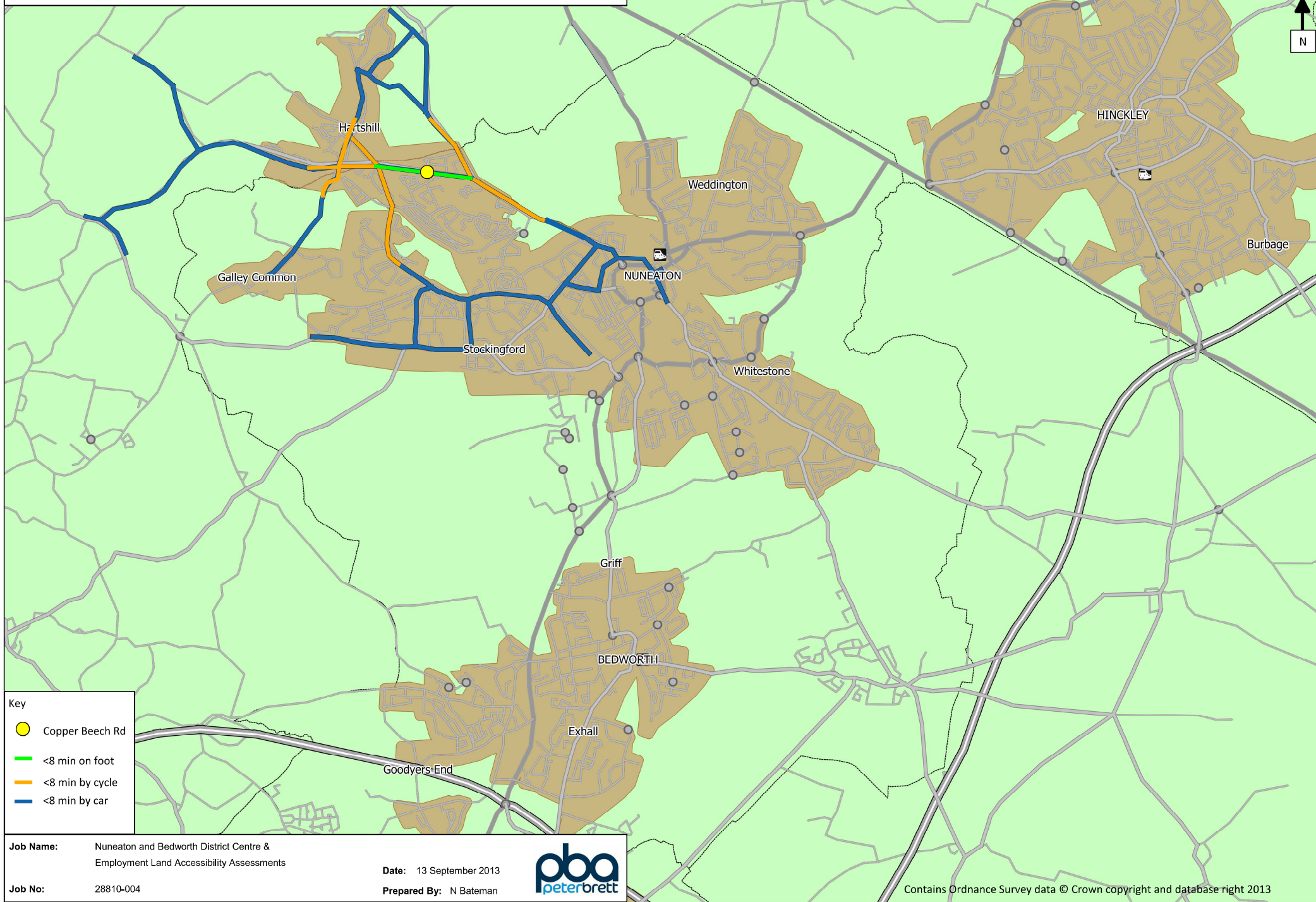


Figure 4 - Travel cordons, Copper Beech Rd



Job Name: Nuneaton and Bedworth District Centre & Employment Land Accessibility Assessments

Job No: 28810-004

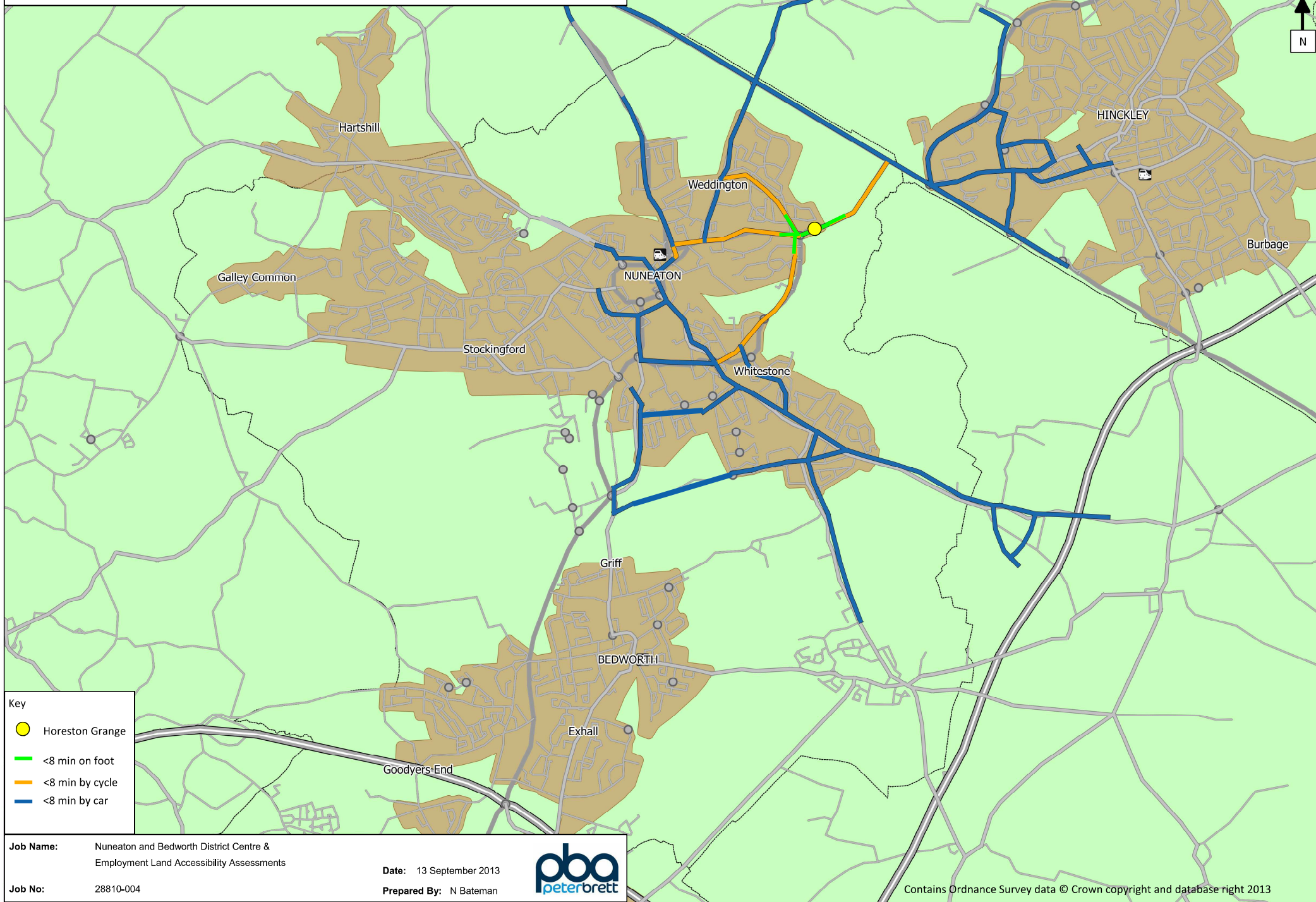
Date: 13 September 2013

Prepared By: N Bateman



Contains Ordnance Survey data © Crown copyright and database right 2013

Figure 5 - Travel cordons, Horeston Grange



Job Name: Nuneaton and Bedworth District Centre & Employment Land Accessibility Assessments

Job No: 28810-004

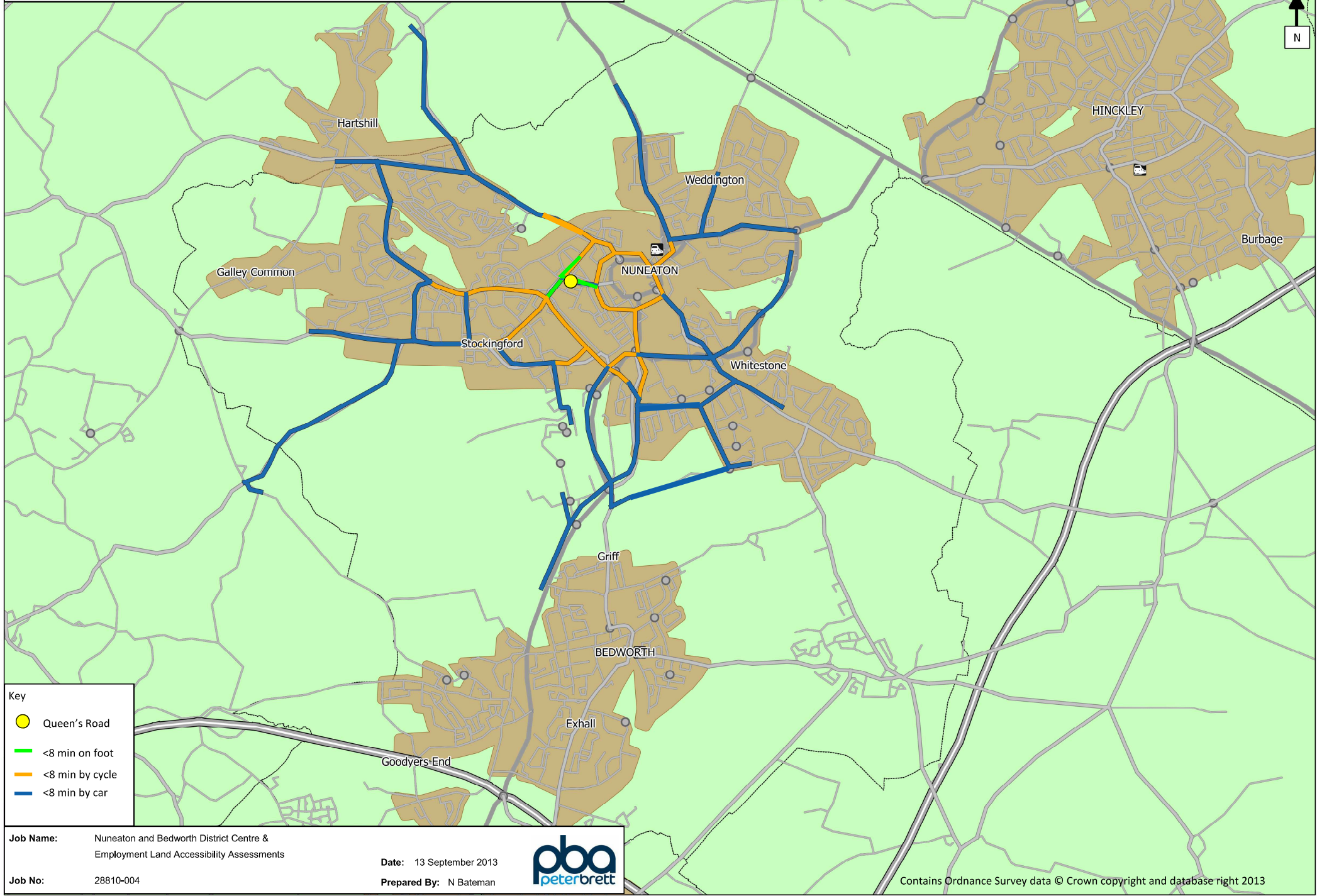
Date: 13 September 2013

Prepared By: N Bateman



Contains Ordnance Survey data © Crown copyright and database right 2013

Figure 6 - Travel cordons, Queen's Road



Key

- Queen's Road
- <8 min on foot
- <8 min by cycle
- <8 min by car