

## **Nuneaton and Bedworth Borough Council Strategic Flood Risk Assessment - Level 2**

**Appendix C: Climate Change Mapping**

**NBBC\_IND1 to NBBC\_IND11**

**November 2012**

**Nuneaton and Bedworth Borough Council  
Town Hall  
Coton Road  
NUNEATON  
Warwickshire  
CV11 5AA**





This page is intentionally left blank

## C Climate Change Mapping



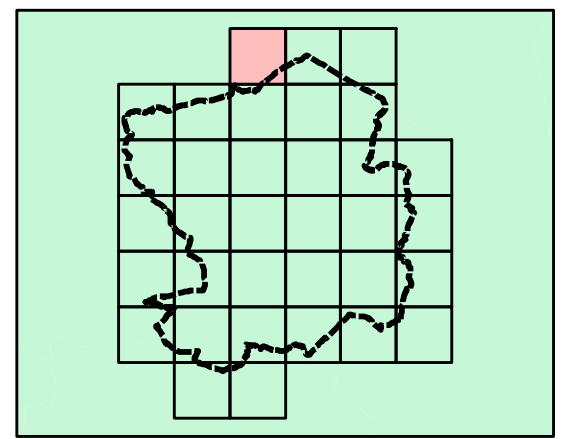


**NOTES**

The climate change maps show the potential impacts that climate change may have on river flows and, subsequently, on flood extents. Where models exist in the study area, a change factor, taken from the EA's "Adapting to Climate Change: Advice for Flood and Coastal Erosion Risk Management Authorities" document, was applied to the 1 in 100 year flows and the models re-run to produce the 1 in 100 year, plus climate change, flood extent.

Where no detailed models are available, and flood zones are based on generalised modelling, no climate change mapping is currently available. Climate change modelling will be required as part of a detailed Flood Risk assessment should development be undertaken in these areas.

**Key Plan**



**Legend**

-  Watercourses
-  Flood Zone 3a Climate Change
-  No climate change modelling available
-  Nuneaton and Bedworth Borough

Reproduced from Ordnance Survey mapping with the permission of Ordnance Survey on behalf of the Controller of Her Majesty's Stationary Office. © Crown copyright. Unauthorised reproduction infringes Crown copyright and may lead to prosecution or civil proceedings. Nuneaton and Bedworth Borough Council Licence:100018416 (2012)



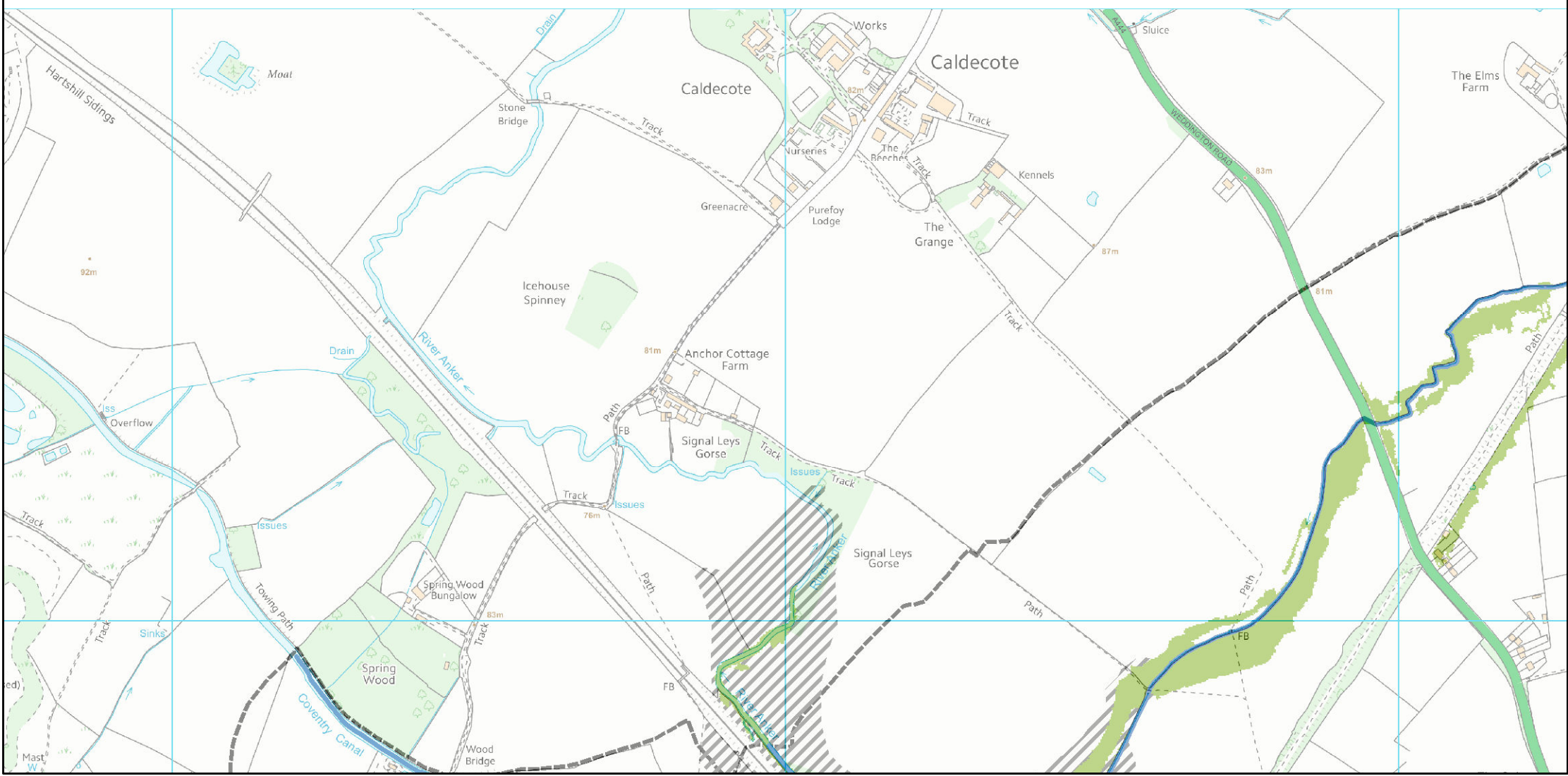
REF	DATE	COMMENTS
A	Sept 2012	Draft
B	Nov 2012	Final
C		

**APPENDIX C**

**CLIMATE CHANGE FLOOD OUTLINES**

Sheet No: 1 of 34 Index Number:NBBC\_IND1

This document is the property of Jeremy Benn Associates Ltd. It shall not be reproduced in whole or in part, nor disclosed to a third party, without the permission of Jeremy Benn Associates Ltd.



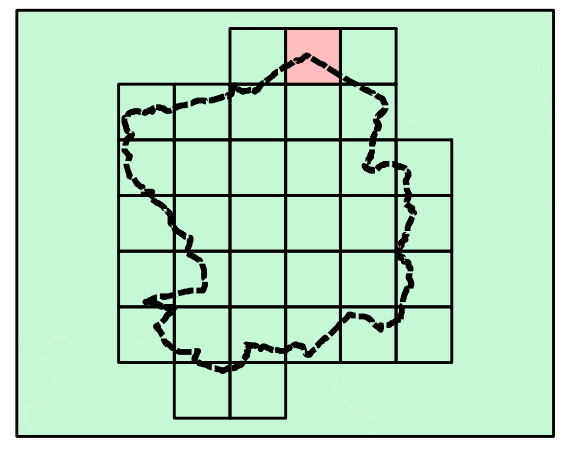


**NOTES**

The climate change maps show the potential impacts that climate change may have on river flows and, subsequently, on flood extents. Where models exist in the study area, a change factor, taken from the EA's "Adapting to Climate Change: Advice for Flood and Coastal Erosion Risk Management Authorities" document, was applied to the 1 in 100 year flows and the models re-run to produce the 1 in 100 year, plus climate change, flood extent.

Where no detailed models are available, and flood zones are based on generalised modelling, no climate change mapping is currently available. Climate change modelling will be required as part of a detailed Flood Risk assessment should development be undertaken in these areas.

**Key Plan**



**Legend**

-  Watercourses
-  Flood Zone 3a Climate Change
-  No climate change modelling available
-  Nuneaton and Bedworth Borough

Reproduced from Ordnance Survey mapping with the permission of Ordnance Survey on behalf of the Controller of Her Majesty's Stationary Office. © Crown copyright. Unauthorised reproduction infringes Crown copyright and may lead to prosecution or civil proceedings. Nuneaton and Bedworth Borough Council Licence:100018416 (2012)



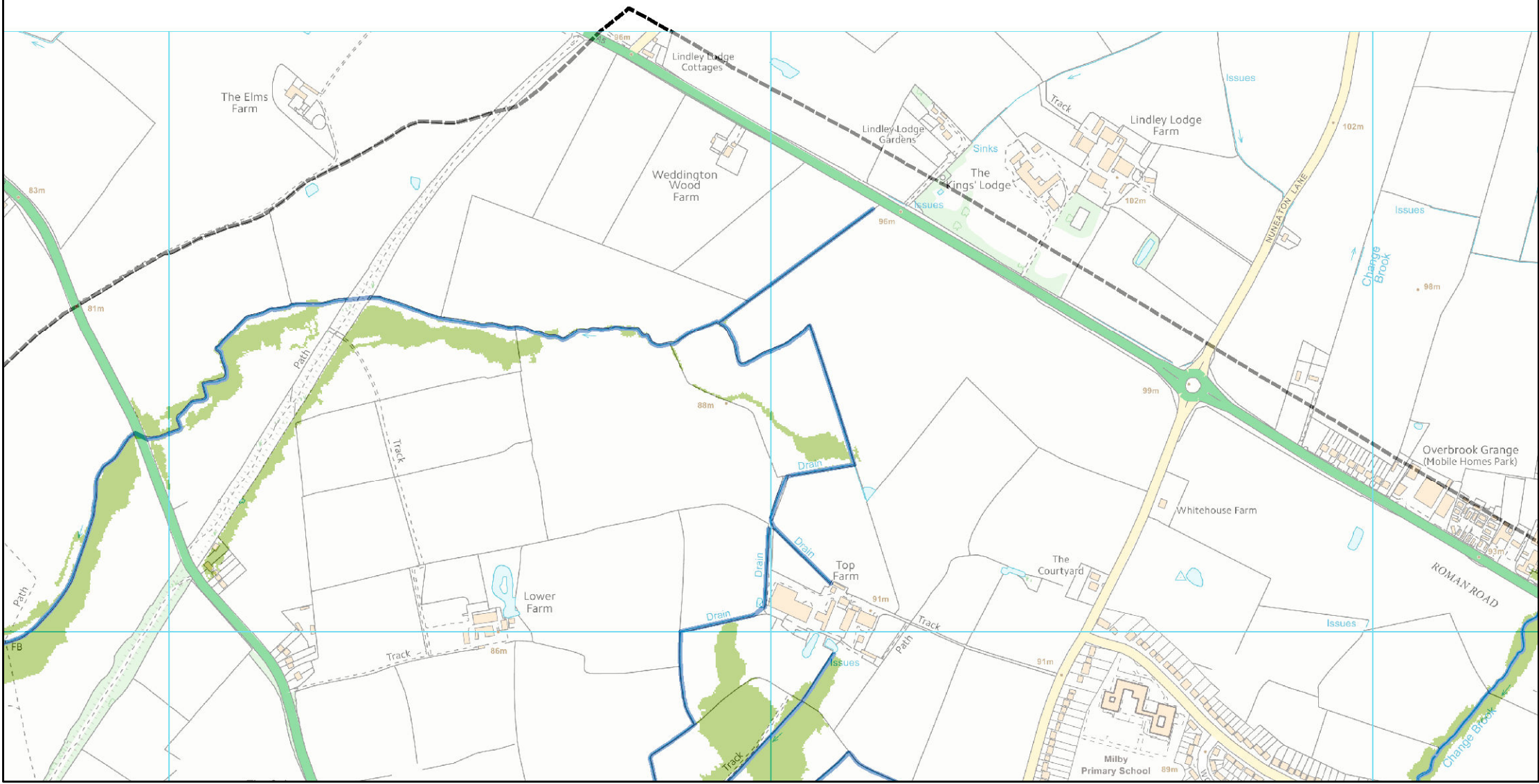
REF	DATE	COMMENTS
A	Sept 2012	Draft
B	Nov 2012	Final
C		

**APPENDIX C**

**CLIMATE CHANGE FLOOD OUTLINES**

Sheet No: 2 of 34 Index Number:NBBC\_IND2

This document is the property of Jeremy Benn Associates Ltd. It shall not be reproduced in whole or in part, nor disclosed to a third party, without the permission of Jeremy Benn Associates Ltd.



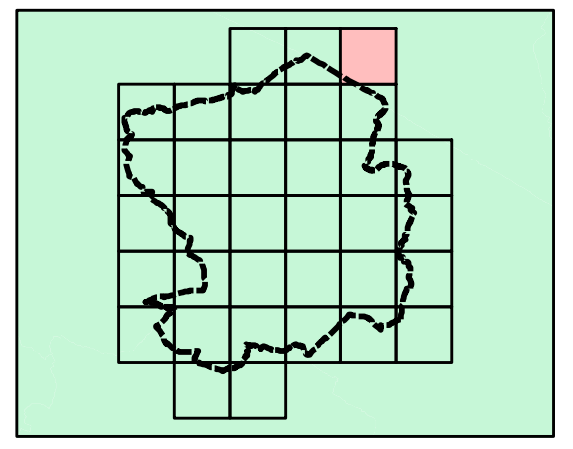


**NOTES**

The climate change maps show the potential impacts that climate change may have on river flows and, subsequently, on flood extents. Where models exist in the study area, a change factor, taken from the EA's "Adapting to Climate Change: Advice for Flood and Coastal Erosion Risk Management Authorities" document, was applied to the 1 in 100 year flows and the models re-run to produce the 1 in 100 year, plus climate change, flood extent.

Where no detailed models are available, and flood zones are based on generalised modelling, no climate change mapping is currently available. Climate change modelling will be required as part of a detailed Flood Risk assessment should development be undertaken in these areas.

**Key Plan**



**Legend**

-  Watercourses
-  Flood Zone 3a Climate Change
-  No climate change modelling available
-  Nuneaton and Bedworth Borough

Reproduced from Ordnance Survey mapping with the permission of Ordnance Survey on behalf of the Controller of Her Majesty's Stationary Office. © Crown copyright. Unauthorised reproduction infringes Crown copyright and may lead to prosecution or civil proceedings. Nuneaton and Bedworth Borough Council Licence:100018416 (2012)



REF	DATE	COMMENTS
A	Sept 2012	Draft
B	Nov 2012	Final
C		

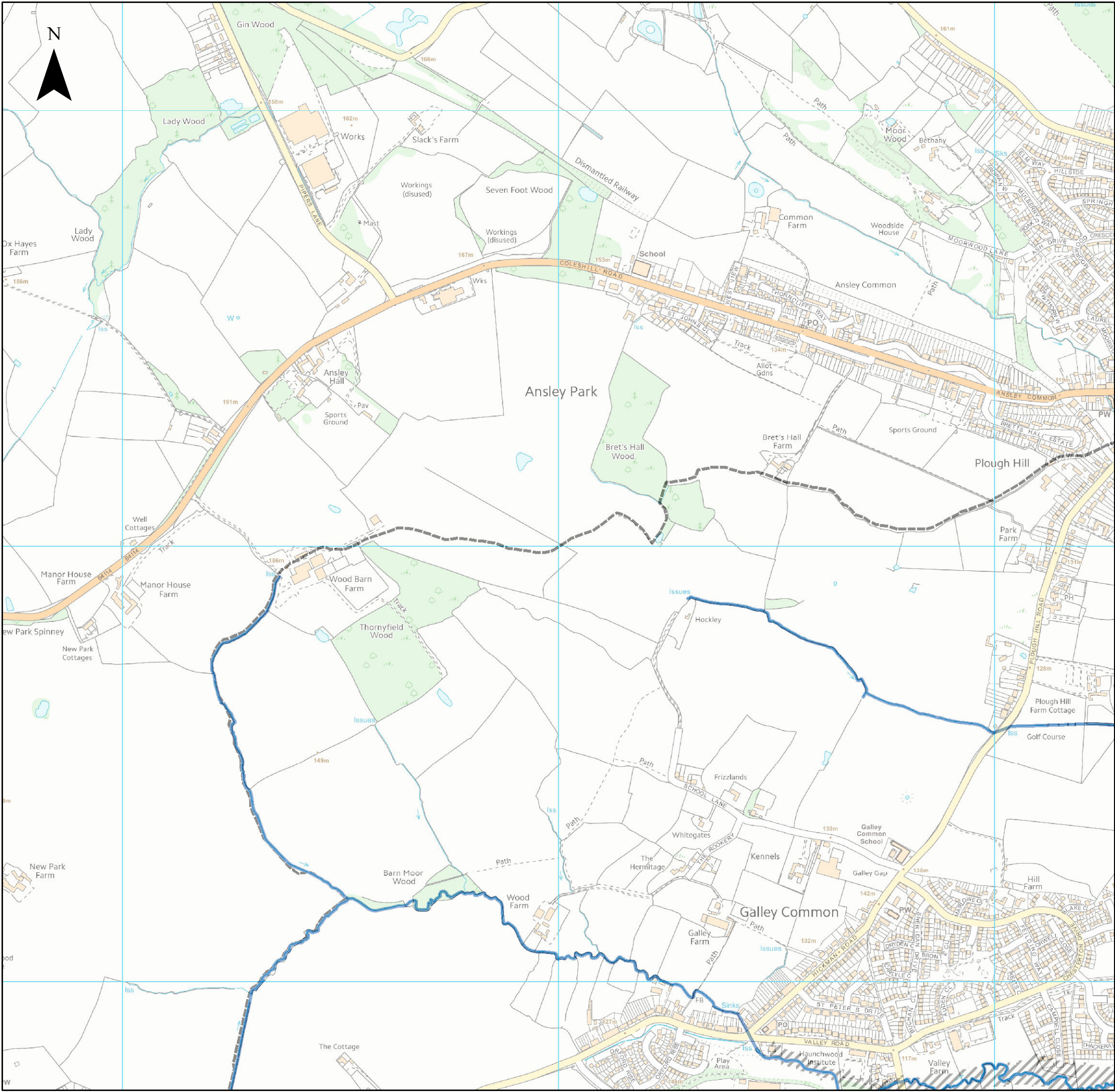
**APPENDIX C**

**CLIMATE CHANGE FLOOD OUTLINES**

Sheet No: 3 of 34 Index Number:NBBC\_IND3

This document is the property of Jeremy Benn Associates Ltd. It shall not be reproduced in whole or in part, nor disclosed to a third party, without the permission of Jeremy Benn Associates Ltd.



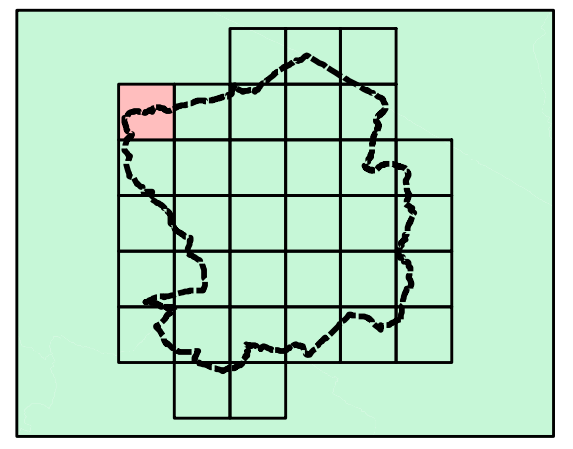


**NOTES**

The climate change maps show the potential impacts that climate change may have on river flows and, subsequently, on flood extents. Where models exist in the study area, a change factor, taken from the EA's "Adapting to Climate Change: Advice for Flood and Coastal Erosion Risk Management Authorities" document, was applied to the 1 in 100 year flows and the models re-run to produce the 1 in 100 year, plus climate change, flood extent.

Where no detailed models are available, and flood zones are based on generalised modelling, no climate change mapping is currently available. Climate change modelling will be required as part of a detailed Flood Risk assessment should development be undertaken in these areas.

**Key Plan**



**Legend**

-  Watercourses
-  Flood Zone 3a Climate Change
-  No climate change modelling available
-  Nuneaton and Bedworth Borough

Reproduced from Ordnance Survey mapping with the permission of Ordnance Survey on behalf of the Controller of Her Majesty's Stationary Office. © Crown copyright. Unauthorised reproduction infringes Crown copyright and may lead to prosecution or civil proceedings. Nuneaton and Bedworth Borough Council Licence:100018416 (2012)



REF	DATE	COMMENTS
A	Sept 2012	Draft
B	Nov 2012	Final
C		

**APPENDIX C**

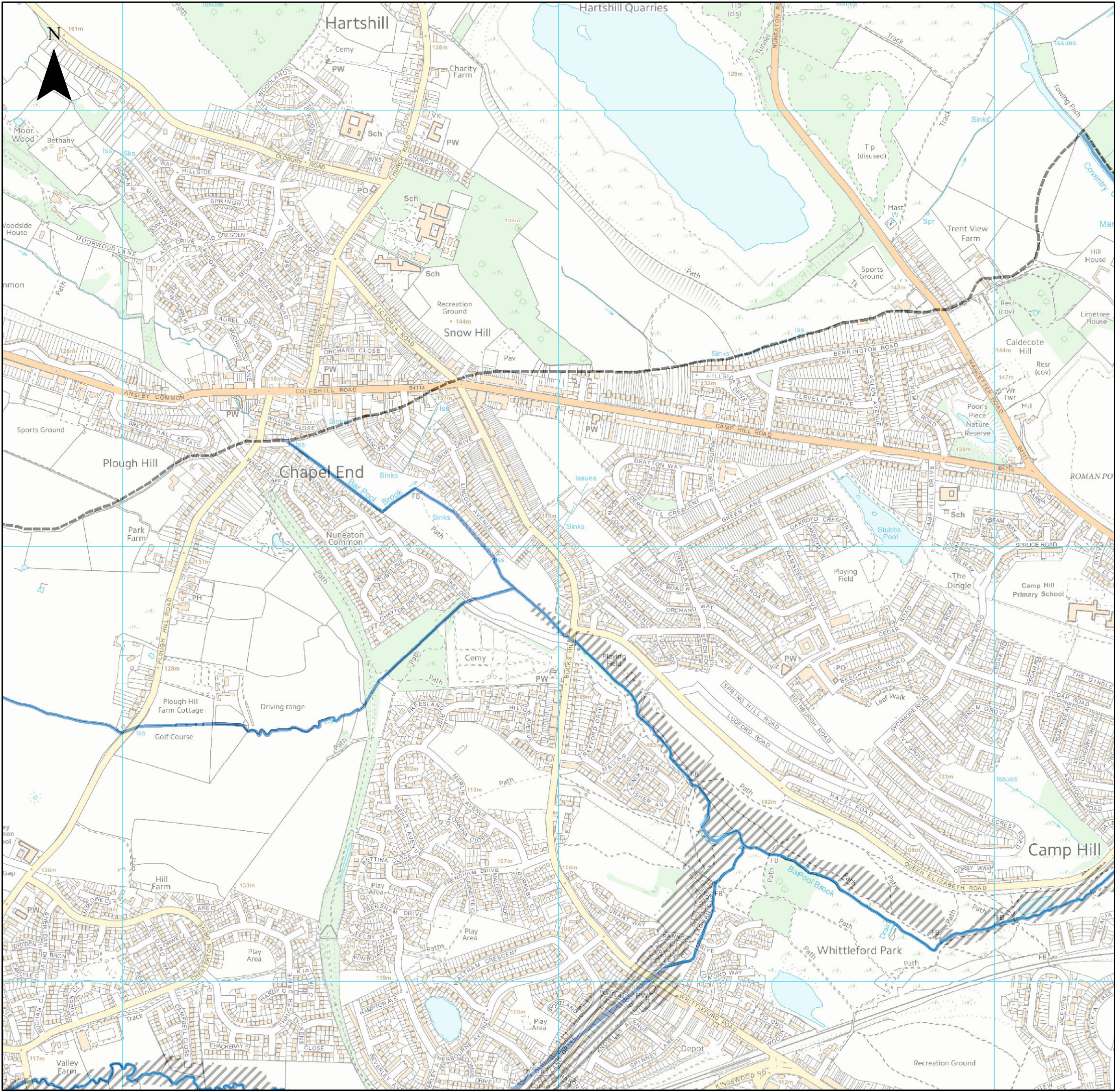
**CLIMATE CHANGE FLOOD OUTLINES**

Sheet No: 4 of 34 Index Number:NBBC\_IND4

This document is the property of Jeremy Benn Associates Ltd. It shall not be reproduced in whole or in part, nor disclosed to a third party, without the permission of Jeremy Benn Associates Ltd.





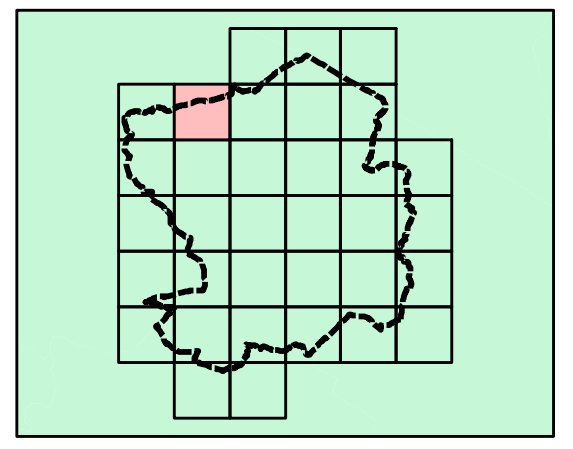


**NOTES**

The climate change maps show the potential impacts that climate change may have on river flows and, subsequently, on flood extents. Where models exist in the study area, a change factor, taken from the EA's "Adapting to Climate Change: Advice for Flood and Coastal Erosion Risk Management Authorities" document, was applied to the 1 in 100 year flows and the models re-run to produce the 1 in 100 year, plus climate change, flood extent.

Where no detailed models are available, and flood zones are based on generalised modelling, no climate change mapping is currently available. Climate change modelling will be required as part of a detailed Flood Risk assessment should development be undertaken in these areas.

**Key Plan**



**Legend**

-  Watercourses
-  Flood Zone 3a Climate Change
-  No climate change modelling available
-  Nuneaton and Bedworth Borough

Reproduced from Ordnance Survey mapping with the permission of Ordnance Survey on behalf of the Controller of Her Majesty's Stationary Office. © Crown copyright. Unauthorised reproduction infringes Crown copyright and may lead to prosecution or civil proceedings. Nuneaton and Bedworth Borough Council Licence:100018416 (2012)



REF	DATE	COMMENTS
A	Sept 2012	Draft
B	Nov 2012	Final
C		

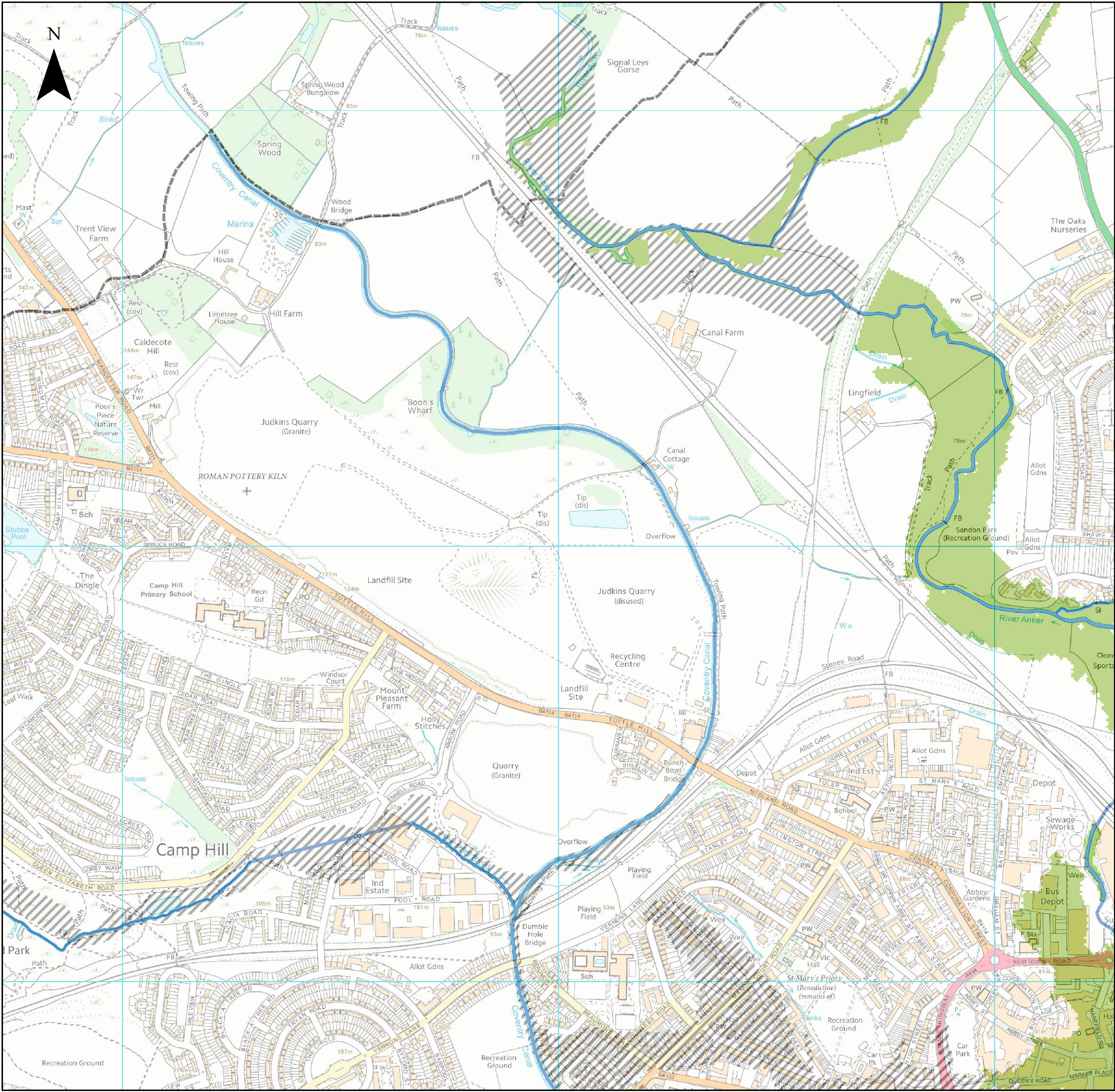
**APPENDIX C**

**CLIMATE CHANGE FLOOD OUTLINES**

Sheet No: 5 of 34 Index Number:NBBC\_IND5

This document is the property of Jeremy Benn Associates Ltd. It shall not be reproduced in whole or in part, nor disclosed to a third party, without the permission of Jeremy Benn Associates Ltd.



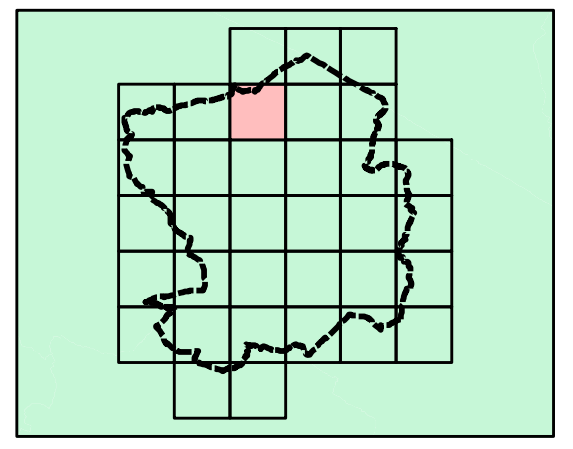


**NOTES**

The climate change maps show the potential impacts that climate change may have on river flows and, subsequently, on flood extents. Where models exist in the study area, a change factor, taken from the EA's "Adapting to Climate Change: Advice for Flood and Coastal Erosion Risk Management Authorities" document, was applied to the 1 in 100 year flows and the models re-run to produce the 1 in 100 year, plus climate change, flood extent.

Where no detailed models are available, and flood zones are based on generalised modelling, no climate change mapping is currently available. Climate change modelling will be required as part of a detailed Flood Risk assessment should development be undertaken in these areas.

**Key Plan**



**Legend**

-  Watercourses
-  Flood Zone 3a Climate Change
-  No climate change modelling available
-  Nuneaton and Bedworth Borough

Reproduced from Ordnance Survey mapping with the permission of Ordnance Survey on behalf of the Controller of Her Majesty's Stationary Office. © Crown copyright. Unauthorised reproduction infringes Crown copyright and may lead to prosecution or civil proceedings. Nuneaton and Bedworth Borough Council Licence:100018416 (2012)



REF	DATE	COMMENTS
A	Sept 2012	Draft
B	Nov 2012	Final
C		

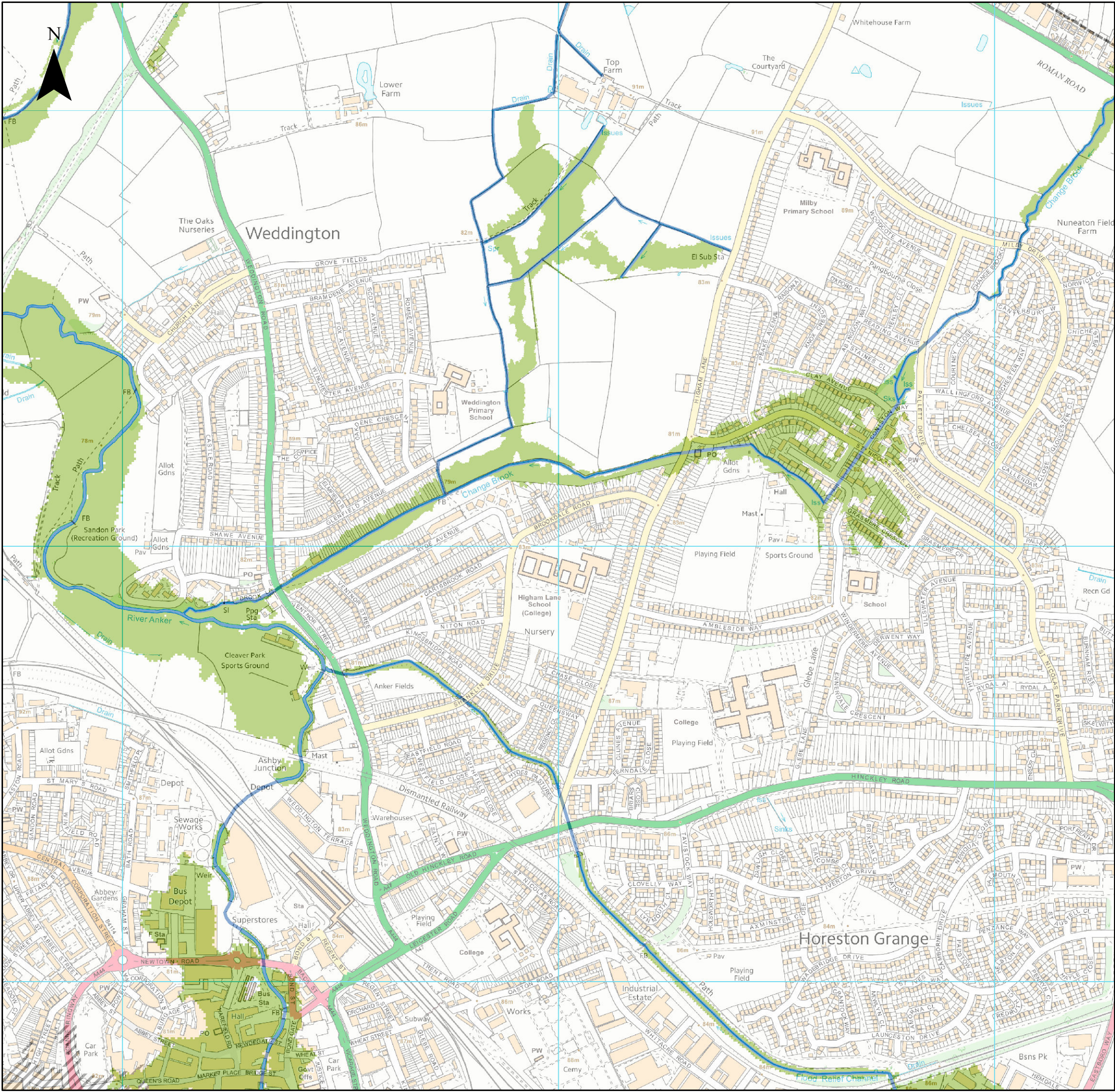
**APPENDIX C**

**CLIMATE CHANGE FLOOD OUTLINES**

Sheet No: 6 of 34 Index Number: NBBC\_IND6

This document is the property of Jeremy Benn Associates Ltd. It shall not be reproduced in whole or in part, nor disclosed to a third party, without the permission of Jeremy Benn Associates Ltd.



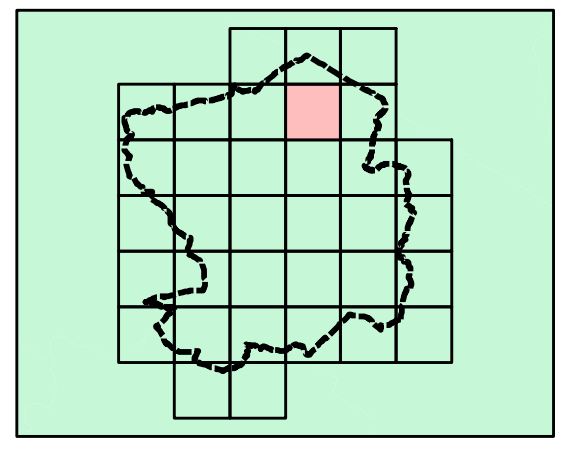


**NOTES**

The climate change maps show the potential impacts that climate change may have on river flows and, subsequently, on flood extents. Where models exist in the study area, a change factor, taken from the EA's "Adapting to Climate Change: Advice for Flood and Coastal Erosion Risk Management Authorities" document, was applied to the 1 in 100 year flows and the models re-run to produce the 1 in 100 year, plus climate change, flood extent.

Where no detailed models are available, and flood zones are based on generalised modelling, no climate change mapping is currently available. Climate change modelling will be required as part of a detailed Flood Risk assessment should development be undertaken in these areas.

**Key Plan**



**Legend**

-  Watercourses
-  Flood Zone 3a Climate Change
-  No climate change modelling available
-  Nuneaton and Bedworth Borough

Reproduced from Ordnance Survey mapping with the permission of Ordnance Survey on behalf of the Controller of Her Majesty's Stationary Office. © Crown copyright. Unauthorised reproduction infringes Crown copyright and may lead to prosecution or civil proceedings. Nuneaton and Bedworth Borough Council Licence:100018416 (2012)



REF	DATE	COMMENTS
A	Sept 2012	Draft
B	Nov 2012	Final
C		

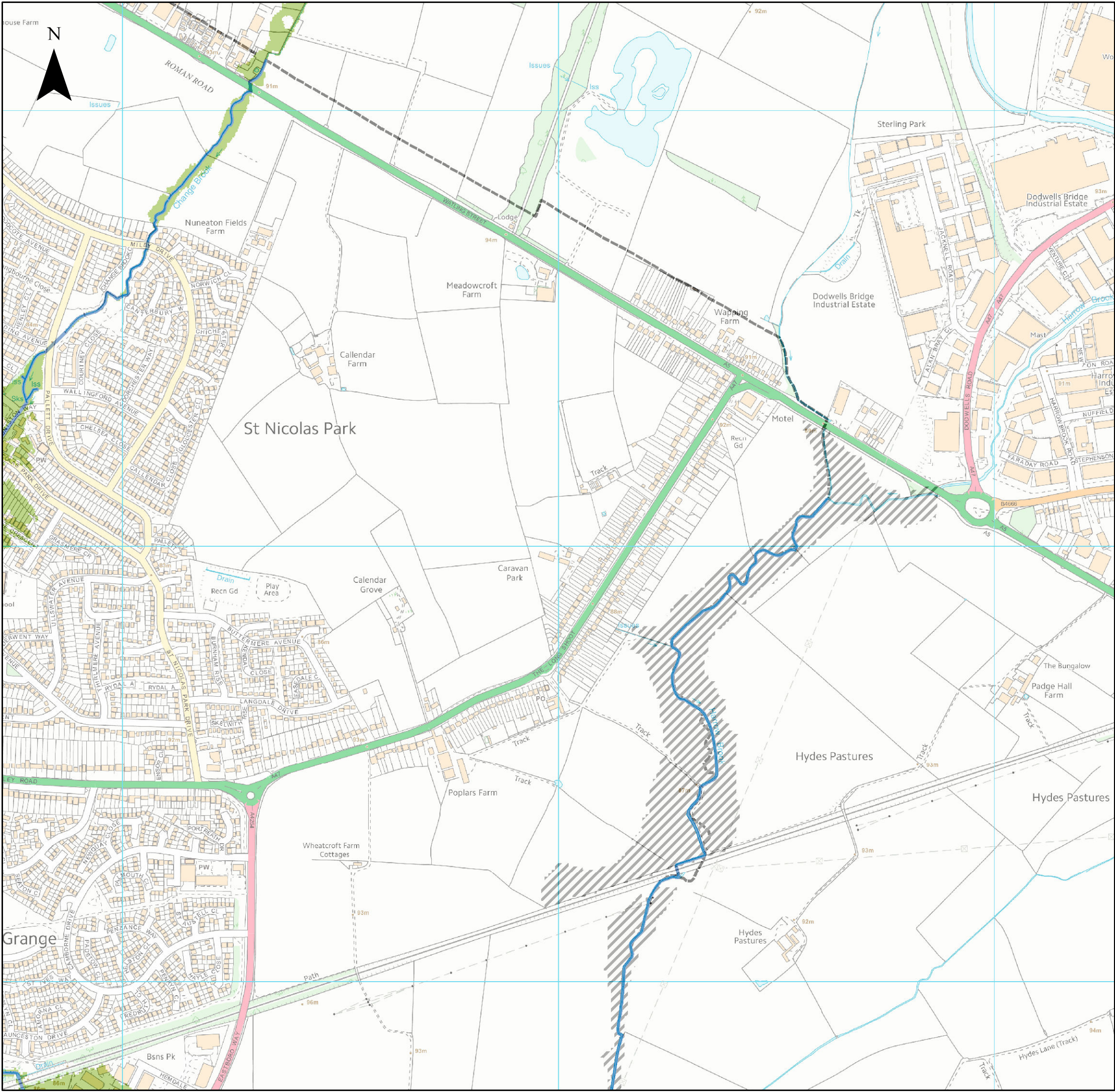
**APPENDIX C**

**CLIMATE CHANGE FLOOD OUTLINES**

Sheet No: 7 of 34 Index Number:NBBC\_IND7

This document is the property of Jeremy Benn Associates Ltd. It shall not be reproduced in whole or in part, nor disclosed to a third party, without the permission of Jeremy Benn Associates Ltd.



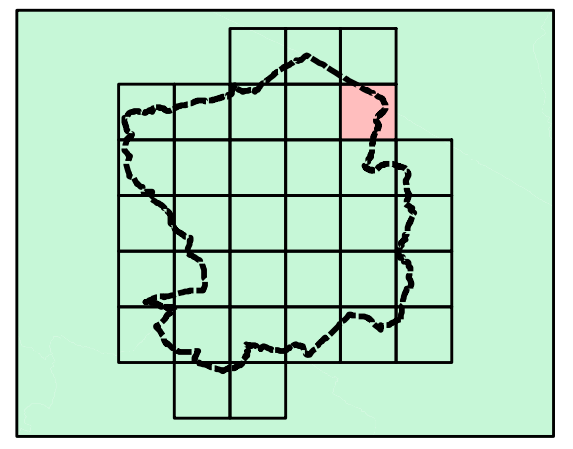


**NOTES**



The climate change maps show the potential impacts that climate change may have on river flows and, subsequently, on flood extents. Where models exist in the study area, a change factor, taken from the EA's "Adapting to Climate Change: Advice for Flood and Coastal Erosion Risk Management Authorities" document, was applied to the 1 in 100 year flows and the models re-run to produce the 1 in 100 year, plus climate change, flood extent.

Where no detailed models are available, and flood zones are based on generalised modelling, no climate change mapping is currently available. Climate change modelling will be required as part of a detailed Flood Risk assessment should development be undertaken in these areas.

**Key Plan**



**Legend**

-  Watercourses
-  Flood Zone 3a Climate Change
-  No climate change modelling available
-  Nuneaton and Bedworth Borough

Reproduced from Ordnance Survey mapping with the permission of Ordnance Survey on behalf of the Controller of Her Majesty's Stationary Office. © Crown copyright. Unauthorised reproduction infringes Crown copyright and may lead to prosecution or civil proceedings. Nuneaton and Bedworth Borough Council Licence:100018416 (2012)



REF	DATE	COMMENTS
A	Sept 2012	Draft
B	Nov 2012	Final
C		

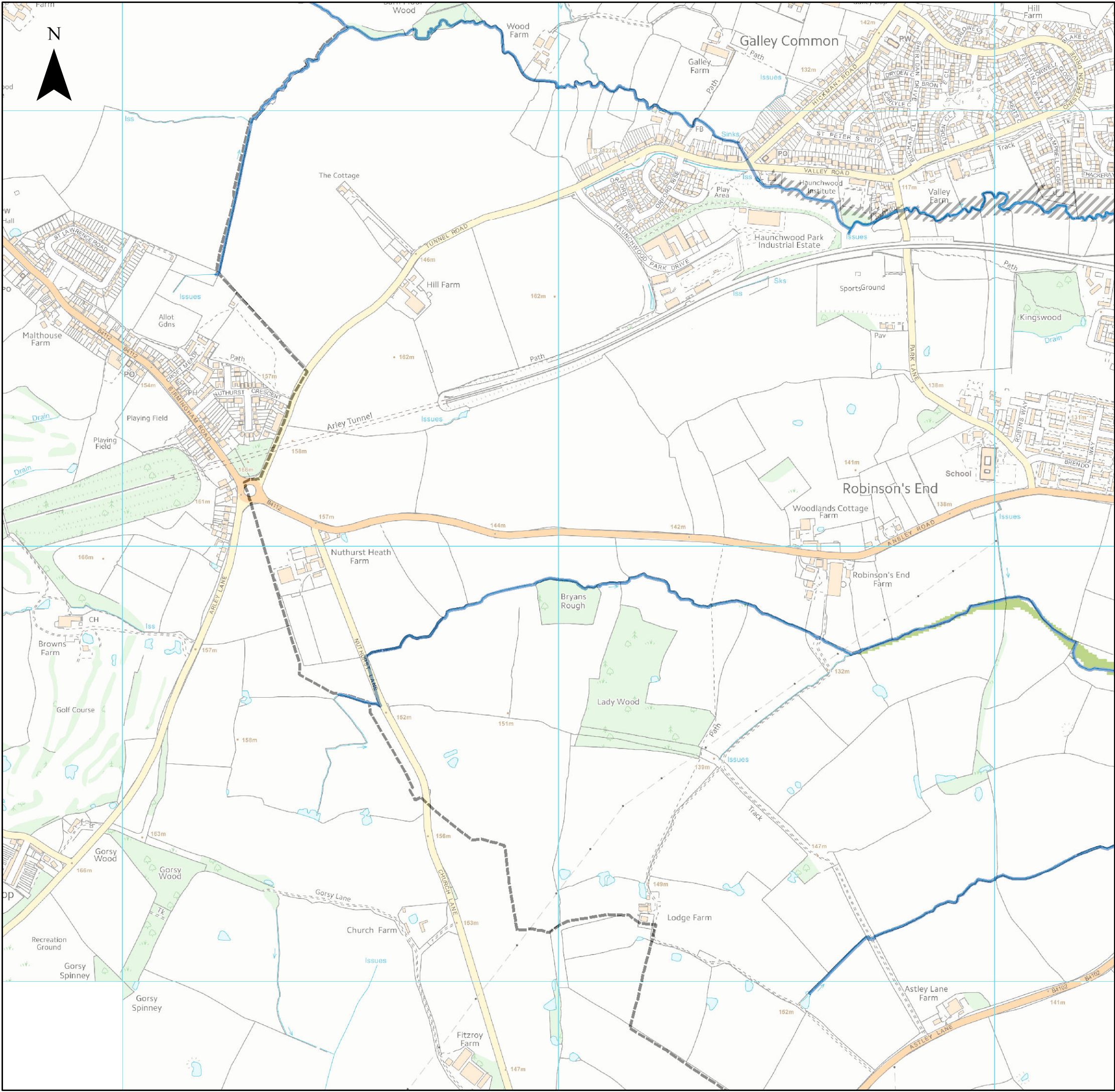
**APPENDIX C**

**CLIMATE CHANGE FLOOD OUTLINES**

Sheet No: 8 of 34 Index Number:NBBC\_IND8

This document is the property of Jeremy Benn Associates Ltd. It shall not be reproduced in whole or in part, nor disclosed to a third party, without the permission of Jeremy Benn Associates Ltd.



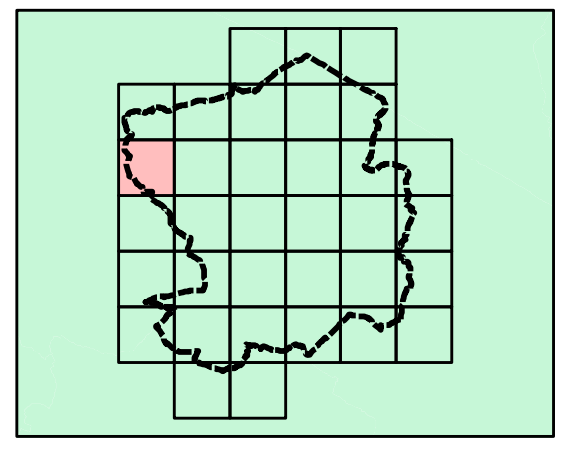


### NOTES


The climate change maps show the potential impacts that climate change may have on river flows and, subsequently, on flood extents. Where models exist in the study area, a change factor, taken from the EA's "Adapting to Climate Change: Advice for Flood and Coastal Erosion Risk Management Authorities" document, was applied to the 1 in 100 year flows and the models re-run to produce the 1 in 100 year, plus climate change, flood extent.

Where no detailed models are available, and flood zones are based on generalised modelling, no climate change mapping is currently available. Climate change modelling will be required as part of a detailed Flood Risk assessment should development be undertaken in these areas.

### Key Plan



### Legend

-  Watercourses
-  Flood Zone 3a Climate Change
-  No climate change modelling available
-  Nuneaton and Bedworth Borough

Reproduced from Ordnance Survey mapping with the permission of Ordnance Survey on behalf of the Controller of Her Majesty's Stationary Office. © Crown copyright. Unauthorised reproduction infringes Crown copyright and may lead to prosecution or civil proceedings. Nuneaton and Bedworth Borough Council Licence:100018416 (2012)



REF	DATE	COMMENTS
A	Sept 2012	Draft
B	Nov 2012	Final
C		

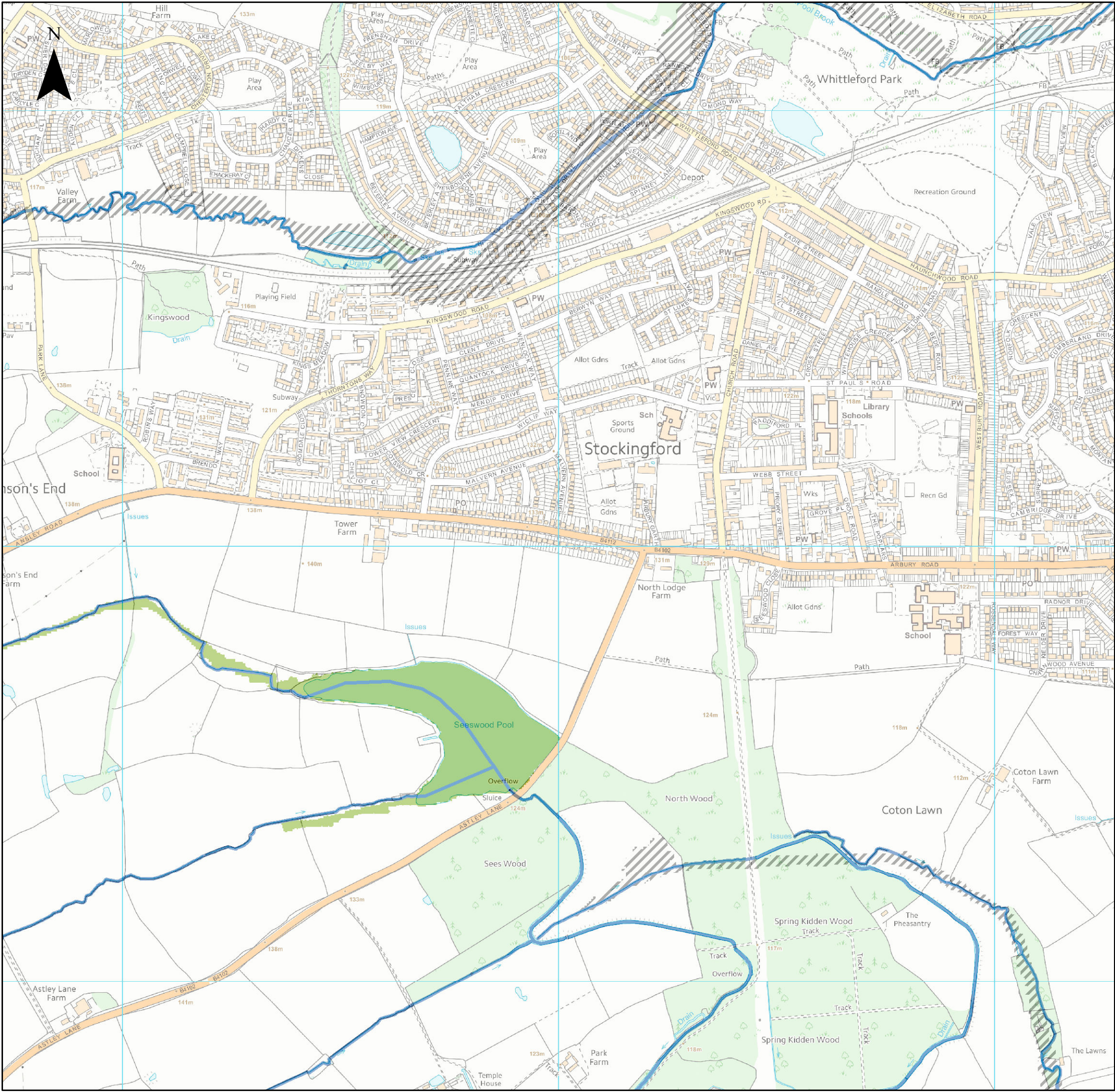
## APPENDIX C

### CLIMATE CHANGE FLOOD OUTLINES

Sheet No: 9 of 34 Index Number:NBBC\_IND9

This document is the property of Jeremy Benn Associates Ltd. It shall not be reproduced in whole or in part, nor disclosed to a third party, without the permission of Jeremy Benn Associates Ltd.



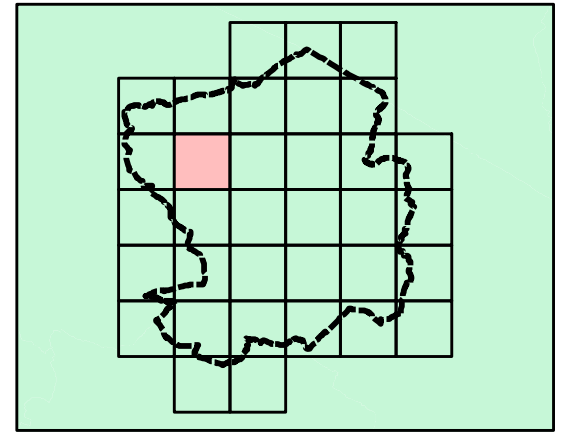


**NOTES**

The climate change maps show the potential impacts that climate change may have on river flows and, subsequently, on flood extents. Where models exist in the study area, a change factor, taken from the EA's "Adapting to Climate Change: Advice for Flood and Coastal Erosion Risk Management Authorities" document, was applied to the 1 in 100 year flows and the models re-run to produce the 1 in 100 year, plus climate change, flood extent.

Where no detailed models are available, and flood zones are based on generalised modelling, no climate change mapping is currently available. Climate change modelling will be required as part of a detailed Flood Risk assessment should development be undertaken in these areas.

**Key Plan**



**Legend**

-  Watercourses
-  Flood Zone 3a Climate Change
-  No climate change modelling available
-  Nuneaton and Bedworth Borough

Reproduced from Ordnance Survey mapping with the permission of Ordnance Survey on behalf of the Controller of Her Majesty's Stationary Office. © Crown copyright. Unauthorised reproduction infringes Crown copyright and may lead to prosecution or civil proceedings. Nuneaton and Bedworth Borough Council Licence:100018416 (2012)



REF	DATE	COMMENTS
A	Sept 2012	Draft
B	Nov 2012	Final
C		

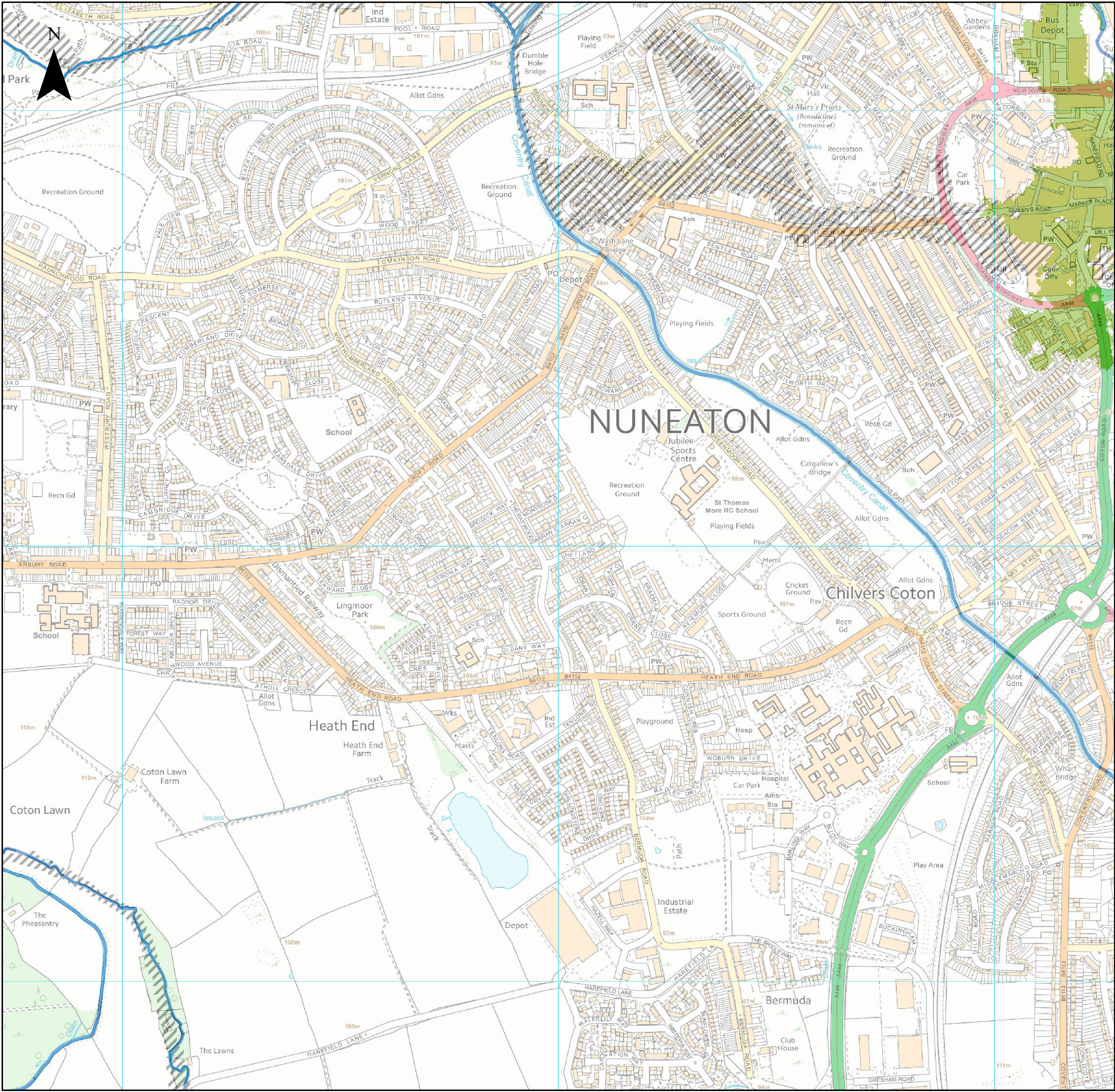
**APPENDIX C**

**CLIMATE CHANGE FLOOD OUTLINES**

Sheet No: 10 of 34 Index Number:NBBC\_IND10

This document is the property of Jeremy Benn Associates Ltd. It shall not be reproduced in whole or in part, nor disclosed to a third party, without the permission of Jeremy Benn Associates Ltd.



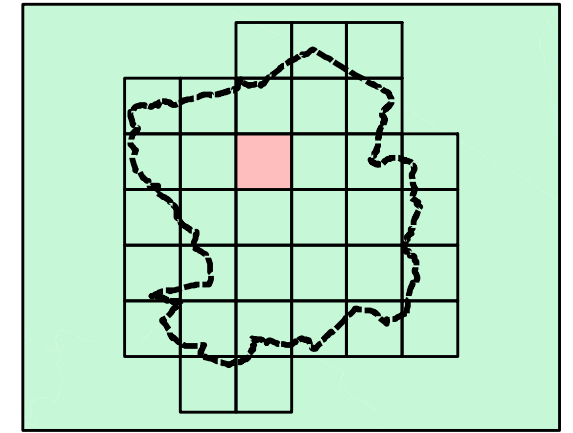


**NOTES**


The climate change maps show the potential impacts that climate change may have on river flows and, subsequently, on flood extents. Where models exist in the study area, a change factor, taken from the EA's "Adapting to Climate Change: Advice for Flood and Coastal Erosion Risk Management Authorities" document, was applied to the 1 in 100 year flows and the models re-run to produce the 1 in 100 year, plus climate change, flood extent.

Where no detailed models are available, and flood zones are based on generalised modelling, no climate change mapping is currently available. Climate change modelling will be required as part of a detailed Flood Risk assessment should development be undertaken in these areas.

**Key Plan**



**Legend**

-  Watercourses
-  Flood Zone 3a Climate Change
-  No climate change modelling available
-  Nuneaton and Bedworth Borough

Reproduced from Ordnance Survey mapping with the permission of Ordnance Survey on behalf of the Controller of Her Majesty's Stationary Office. © Crown copyright. Unauthorised reproduction infringes Crown copyright and may lead to prosecution or civil proceedings. Nuneaton and Bedworth Borough Council Licence:100018416 (2012)



REF	DATE	COMMENTS
A	Sept 2012	Draft
B	Nov 2012	Final
C		

**APPENDIX C**

**CLIMATE CHANGE FLOOD OUTLINES**

Sheet No: 11 of 34 Index Number:NBBC\_IND11

This document is the property of Jeremy Benn Associates Ltd. It shall not be reproduced in whole or in part, nor disclosed to a third party, without the permission of Jeremy Benn Associates Ltd.





**JBA**  
consulting

Offices at

**Atherstone**

**Doncaster**

**Edinburgh**

**Haywards Heath**

**Limerick**

**Newcastle upon Tyne**

**Newport**

**Saltaire**

**Skipton**

**Tadcaster**

**Thirsk**

**Wallingford**

**Warrington**

Registered Office

**South Barn**

**Broughton Hall**

**SKIPTON**

**North Yorkshire**

**BD23 3AE**

t:+44(0)1756 799919

e:[info@jbaconsulting.com](mailto:info@jbaconsulting.com)

Jeremy Benn Associates Ltd  
**Registered in England 3246693**



Visit our website  
[www.jbaconsulting.com](http://www.jbaconsulting.com)