

**Nuneaton and Bedworth Borough
Council Strategic Flood Risk
Assessment - Level 2**

Appendix C: Climate Change Mapping

NBBC_IND12 to NBBC_IND22

November 2012

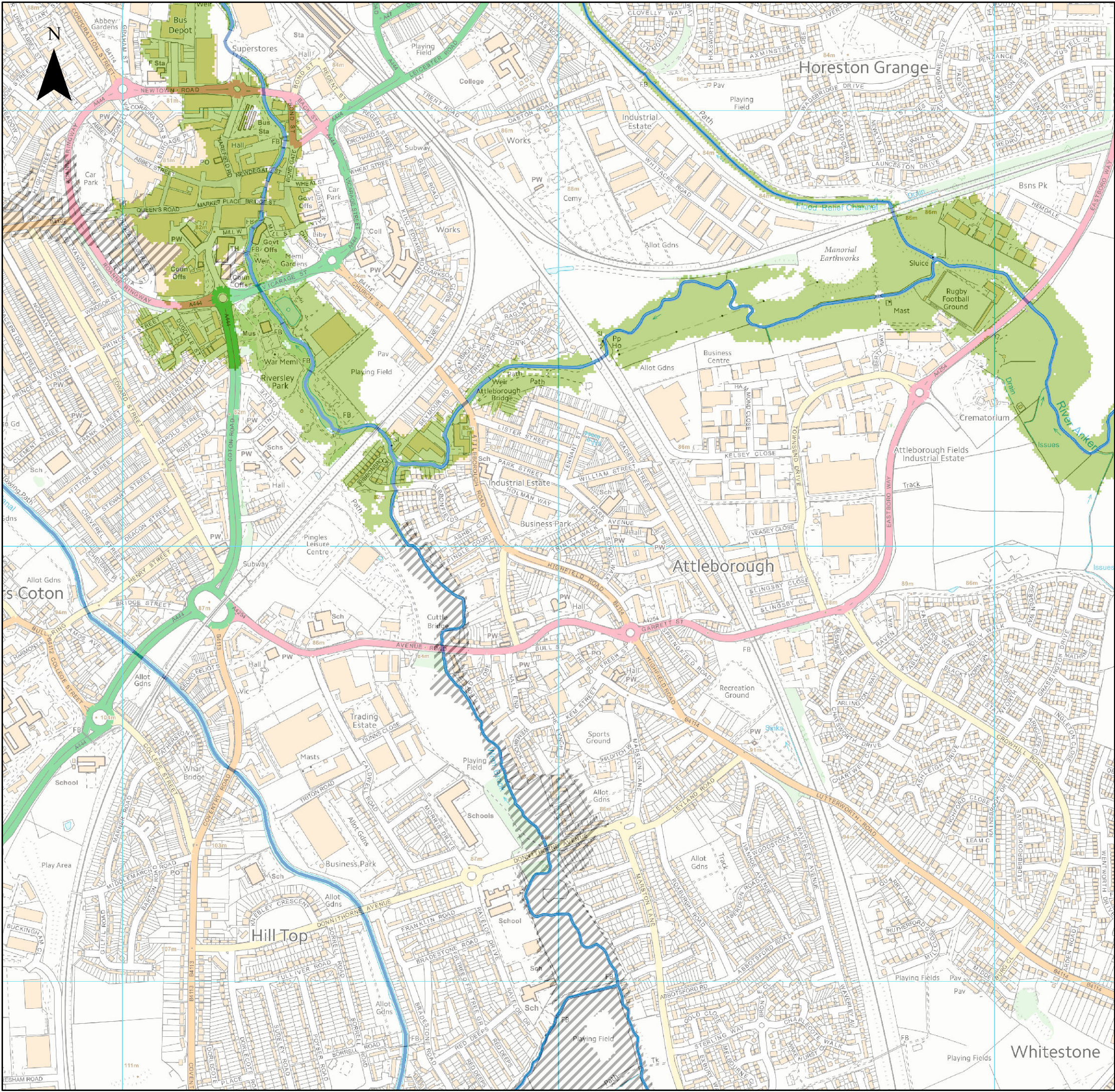
**Nuneaton and Bedworth Borough Council
Town Hall
Coton Road
NUNEATON
Warwickshire
CV11 5AA**





This page is intentionally left blank

C Climate Change Mapping

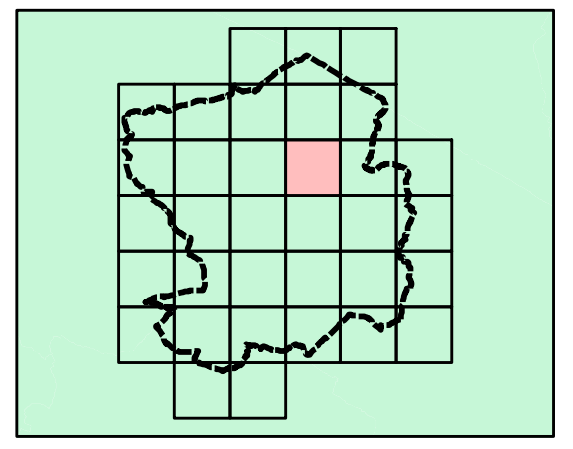


NOTES

The climate change maps show the potential impacts that climate change may have on river flows and, subsequently, on flood extents. Where models exist in the study area, a change factor, taken from the EA's "Adapting to Climate Change: Advice for Flood and Coastal Erosion Risk Management Authorities" document, was applied to the 1 in 100 year flows and the models re-run to produce the 1 in 100 year, plus climate change, flood extent.

Where no detailed models are available, and flood zones are based on generalised modelling, no climate change mapping is currently available. Climate change modelling will be required as part of a detailed Flood Risk assessment should development be undertaken in these areas.

Key Plan



Legend

-  Watercourses
-  Flood Zone 3a Climate Change
-  No climate change modelling available
-  Nuneaton and Bedworth Borough

Reproduced from Ordnance Survey mapping with the permission of Ordnance Survey on behalf of the Controller of Her Majesty's Stationary Office. © Crown copyright. Unauthorised reproduction infringes Crown copyright and may lead to prosecution or civil proceedings. Nuneaton and Bedworth Borough Council Licence:100018416 (2012)



REF	DATE	COMMENTS
A	Sept 2012	Draft
B	Nov 2012	Final
C		

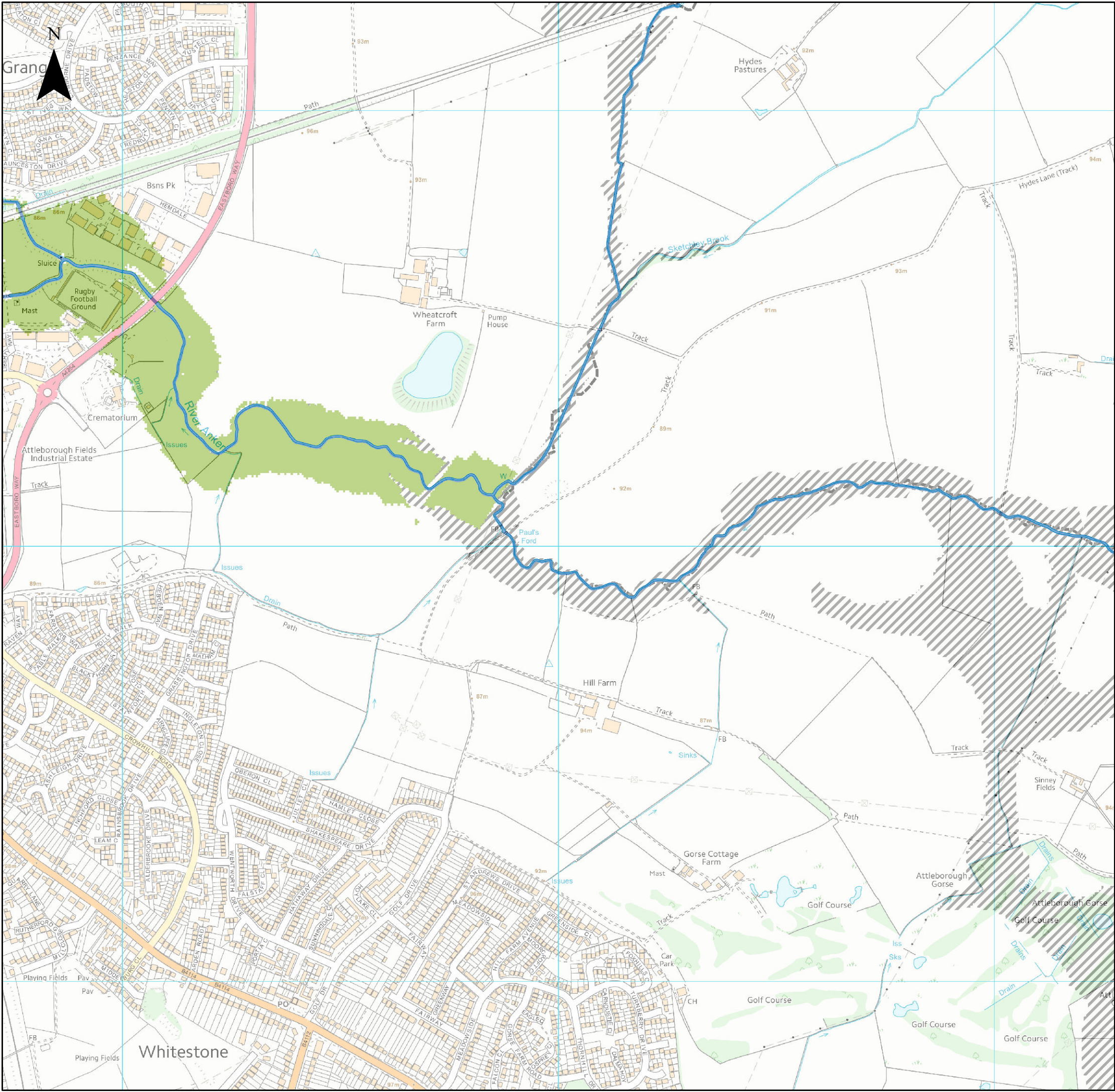
APPENDIX C

CLIMATE CHANGE FLOOD OUTLINES

Sheet No: 12 of 34 Index Number:NBBC_IND12

This document is the property of Jeremy Benn Associates Ltd. It shall not be reproduced in whole or in part, nor disclosed to a third party, without the permission of Jeremy Benn Associates Ltd.



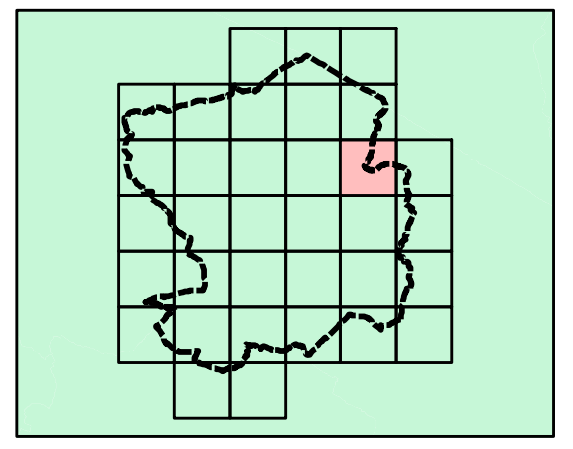


NOTES

The climate change maps show the potential impacts that climate change may have on river flows and, subsequently, on flood extents. Where models exist in the study area, a change factor, taken from the EA's "Adapting to Climate Change: Advice for Flood and Coastal Erosion Risk Management Authorities" document, was applied to the 1 in 100 year flows and the models re-run to produce the 1 in 100 year, plus climate change, flood extent.

Where no detailed models are available, and flood zones are based on generalised modelling, no climate change mapping is currently available. Climate change modelling will be required as part of a detailed Flood Risk assessment should development be undertaken in these areas.

Key Plan



Legend

-  Watercourses
-  Flood Zone 3a Climate Change
-  No climate change modelling available
-  Nuneaton and Bedworth Borough

Reproduced from Ordnance Survey mapping with the permission of Ordnance Survey on behalf of the Controller of Her Majesty's Stationary Office. © Crown copyright. Unauthorised reproduction infringes Crown copyright and may lead to prosecution or civil proceedings. Nuneaton and Bedworth Borough Council Licence:100018416 (2012)



REF	DATE	COMMENTS
A	Sept 2012	Draft
B	Nov 2012	Final
C		

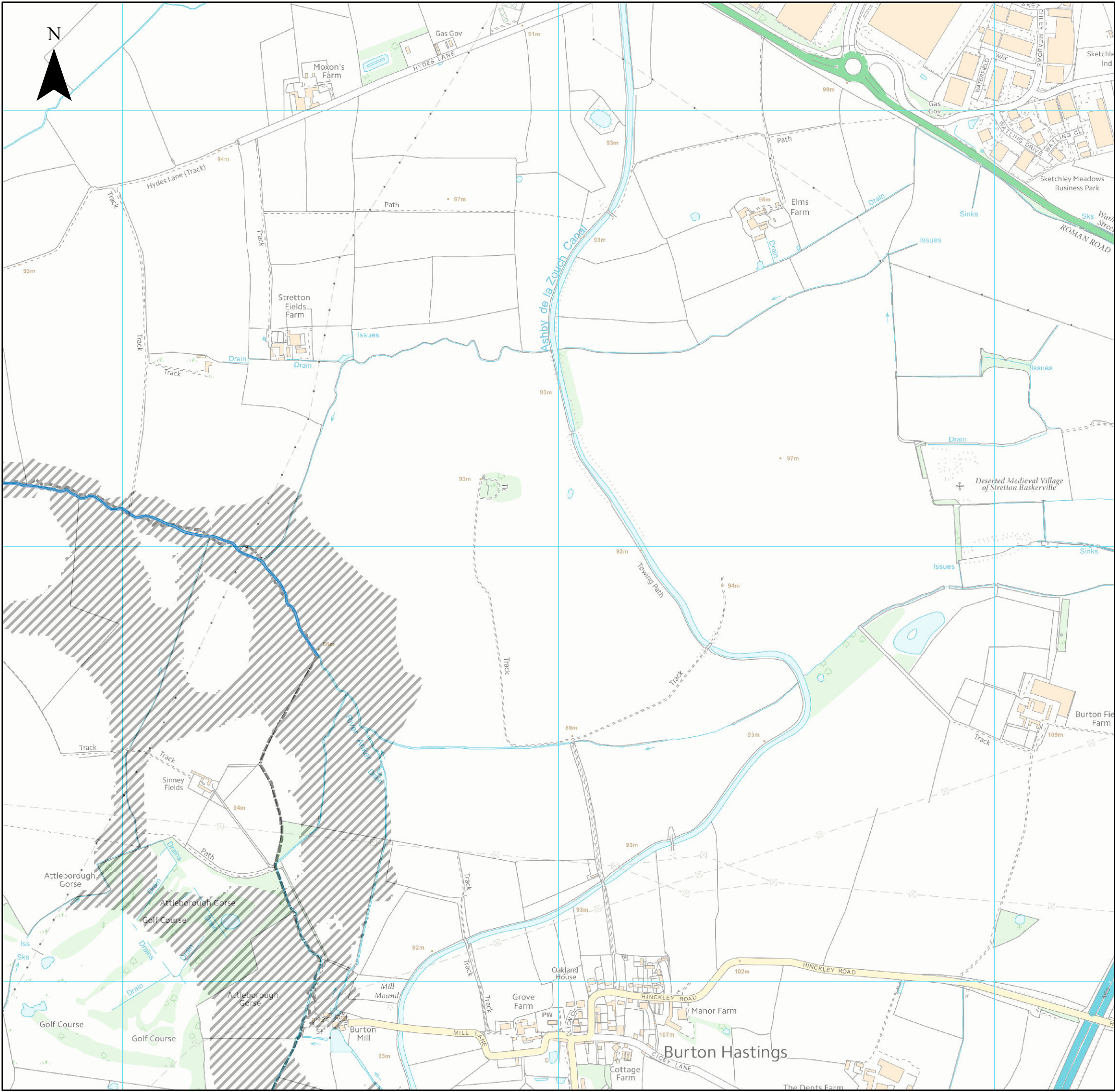
APPENDIX C

CLIMATE CHANGE FLOOD OUTLINES

Sheet No: 13 of 34 Index Number:NBBC_IND13

This document is the property of Jeremy Benn Associates Ltd. It shall not be reproduced in whole or in part, nor disclosed to a third party, without the permission of Jeremy Benn Associates Ltd.



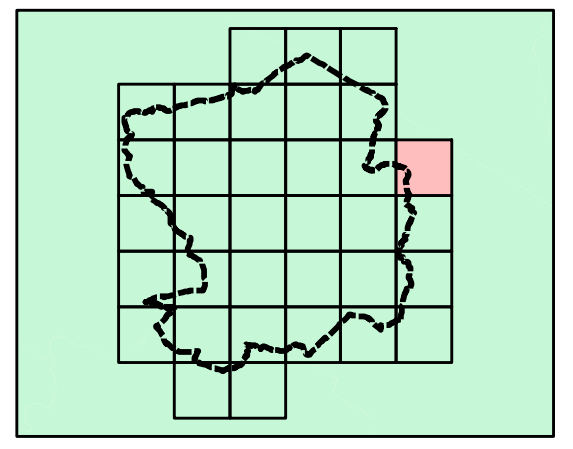


NOTES

The climate change maps show the potential impacts that climate change may have on river flows and, subsequently, on flood extents. Where models exist in the study area, a change factor, taken from the EA's "Adapting to Climate Change: Advice for Flood and Coastal Erosion Risk Management Authorities" document, was applied to the 1 in 100 year flows and the models re-run to produce the 1 in 100 year, plus climate change, flood extent.

Where no detailed models are available, and flood zones are based on generalised modelling, no climate change mapping is currently available. Climate change modelling will be required as part of a detailed Flood Risk assessment should development be undertaken in these areas.

Key Plan



Legend

-  Watercourses
-  Flood Zone 3a Climate Change
-  No climate change modelling available
-  Nuneaton and Bedworth Borough

Reproduced from Ordnance Survey mapping with the permission of Ordnance Survey on behalf of the Controller of Her Majesty's Stationary Office. © Crown copyright. Unauthorised reproduction infringes Crown copyright and may lead to prosecution or civil proceedings. Nuneaton and Bedworth Borough Council Licence:100018416 (2012)



REF	DATE	COMMENTS
A	Sept 2012	Draft
B	Nov 2012	Final
C		

APPENDIX C

CLIMATE CHANGE FLOOD OUTLINES

Sheet No: 14 of 34 Index Number:NBBC_IND14

This document is the property of Jeremy Benn Associates Ltd. It shall not be reproduced in whole or in part, nor disclosed to a third party, without the permission of Jeremy Benn Associates Ltd.



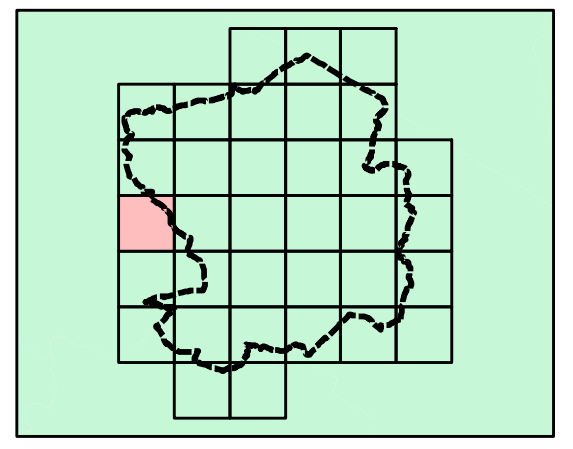


NOTES

The climate change maps show the potential impacts that climate change may have on river flows and, subsequently, on flood extents. Where models exist in the study area, a change factor, taken from the EA's "Adapting to Climate Change: Advice for Flood and Coastal Erosion Risk Management Authorities" document, was applied to the 1 in 100 year flows and the models re-run to produce the 1 in 100 year, plus climate change, flood extent.

Where no detailed models are available, and flood zones are based on generalised modelling, no climate change mapping is currently available. Climate change modelling will be required as part of a detailed Flood Risk assessment should development be undertaken in these areas.

Key Plan



Legend

-  Watercourses
-  Flood Zone 3a Climate Change
-  No climate change modelling available
-  Nuneaton and Bedworth Borough

Reproduced from Ordnance Survey mapping with the permission of Ordnance Survey on behalf of the Controller of Her Majesty's Stationary Office. © Crown copyright. Unauthorised reproduction infringes Crown copyright and may lead to prosecution or civil proceedings. Nuneaton and Bedworth Borough Council Licence:100018416 (2012)



REF	DATE	COMMENTS
A	Sept 2012	Draft
B	Nov 2012	Final
C		

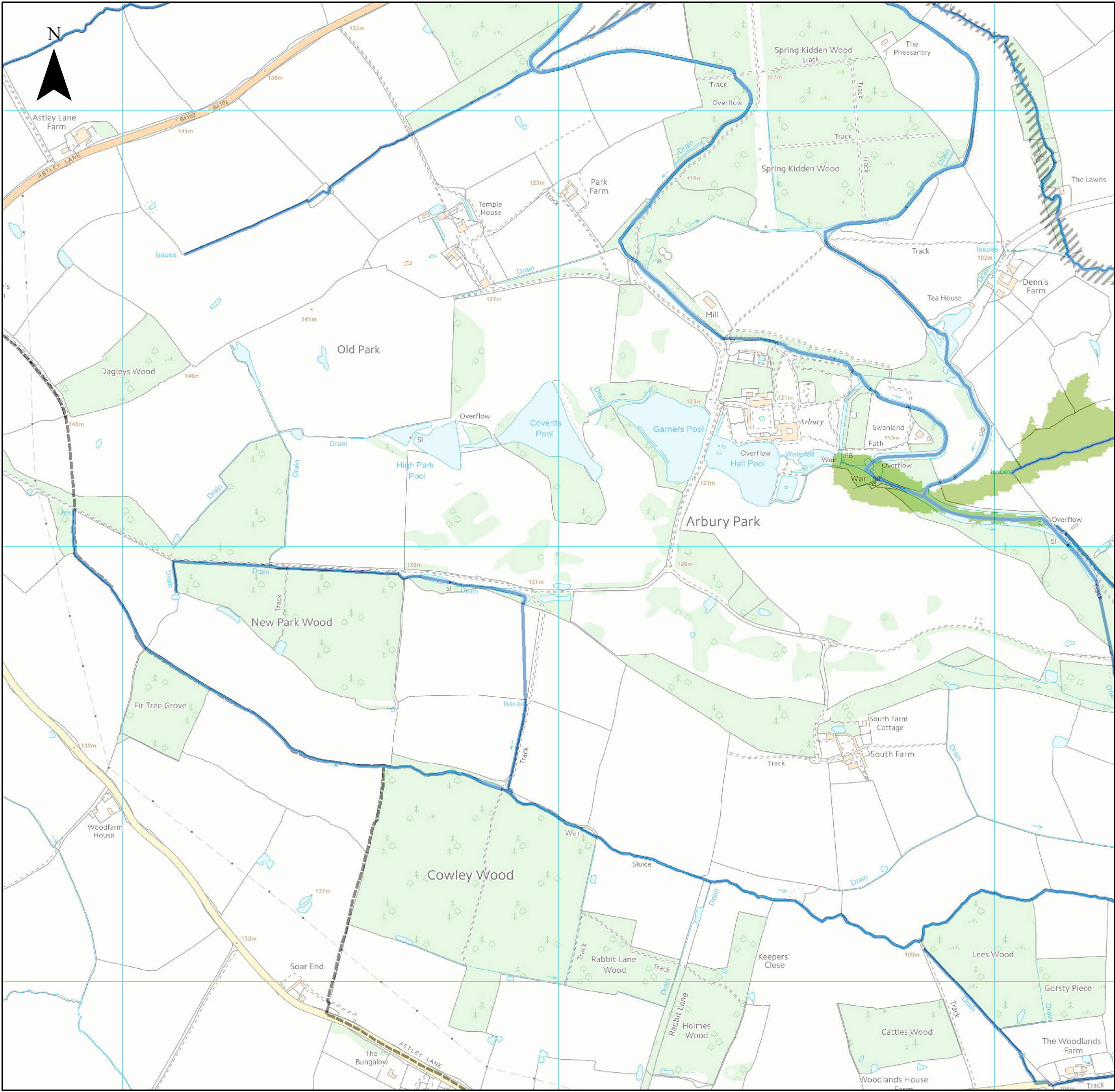
APPENDIX C

CLIMATE CHANGE FLOOD OUTLINES

Sheet No: 15 of 34 Index Number:NBBC_IND15

This document is the property of Jeremy Benn Associates Ltd. It shall not be reproduced in whole or in part, nor disclosed to a third party, without the permission of Jeremy Benn Associates Ltd.



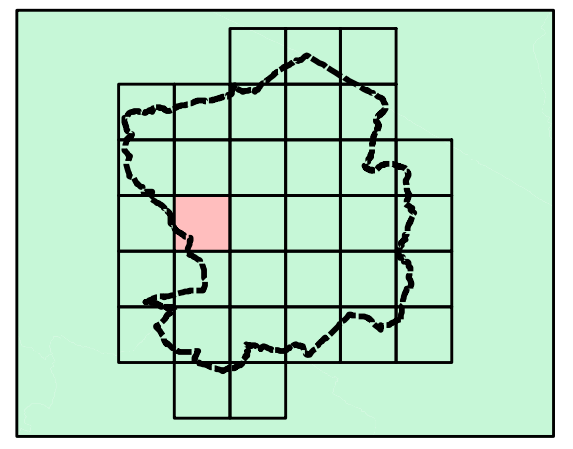


NOTES

The climate change maps show the potential impacts that climate change may have on river flows and, subsequently, on flood extents. Where models exist in the study area, a change factor, taken from the EA's "Adapting to Climate Change: Advice for Flood and Coastal Erosion Risk Management Authorities" document, was applied to the 1 in 100 year flows and the models re-run to produce the 1 in 100 year, plus climate change, flood extent.

Where no detailed models are available, and flood zones are based on generalised modelling, no climate change mapping is currently available. Climate change modelling will be required as part of a detailed Flood Risk assessment should development be undertaken in these areas.

Key Plan



Legend

-  Watercourses
-  Flood Zone 3a Climate Change
-  No climate change modelling available
-  Nuneaton and Bedworth Borough

Reproduced from Ordnance Survey mapping with the permission of Ordnance Survey on behalf of the Controller of Her Majesty's Stationary Office. © Crown copyright. Unauthorised reproduction infringes Crown copyright and may lead to prosecution or civil proceedings. Nuneaton and Bedworth Borough Council Licence:100018416 (2012)



REF	DATE	COMMENTS
A	Sept 2012	Draft
B	Nov 2012	Final
C		

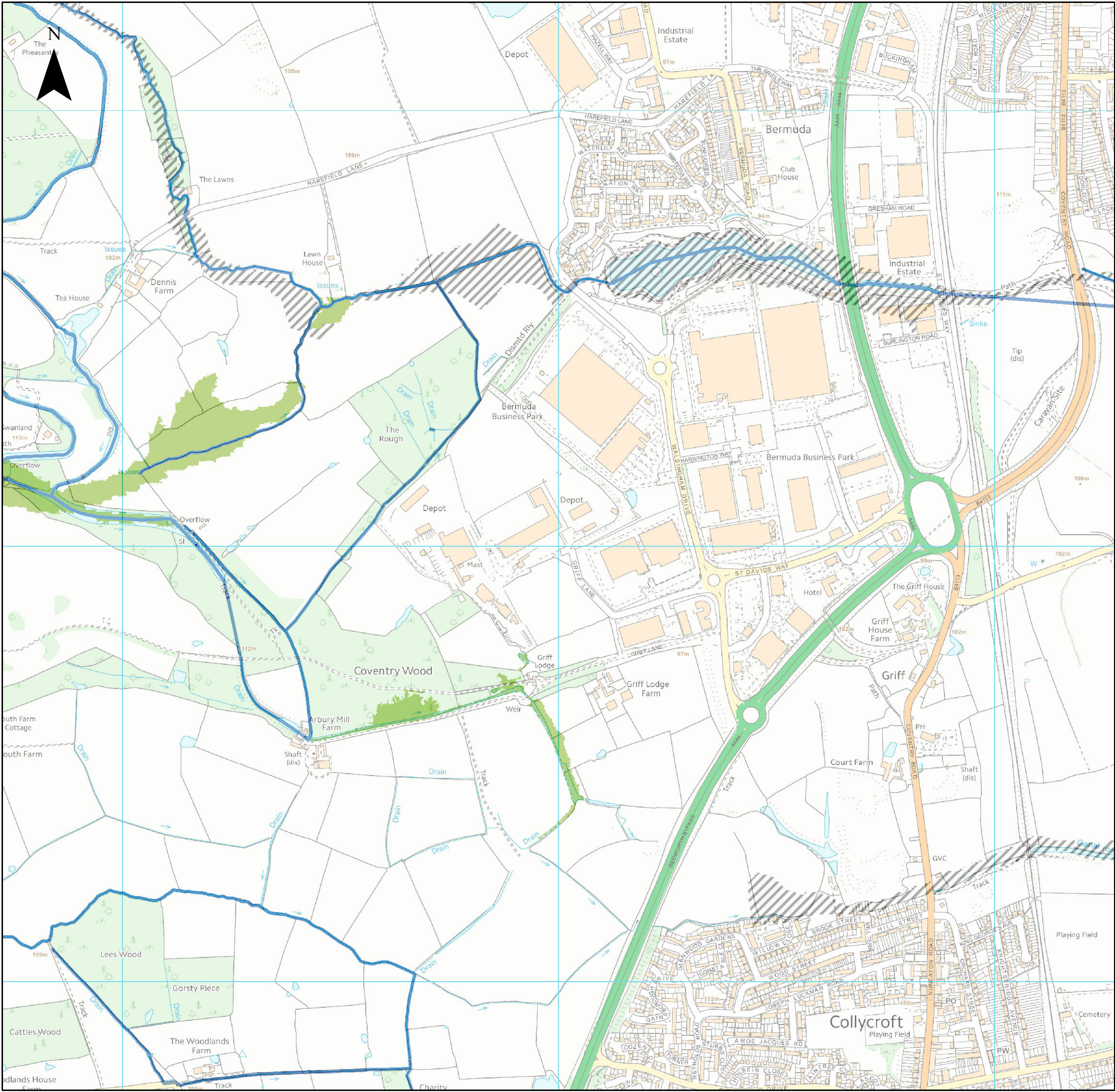
APPENDIX C

CLIMATE CHANGE FLOOD OUTLINES

Sheet No: 16 of 34 Index Number:NBBC_IND16

This document is the property of Jeremy Benn Associates Ltd. It shall not be reproduced in whole or in part, nor disclosed to a third party, without the permission of Jeremy Benn Associates Ltd.



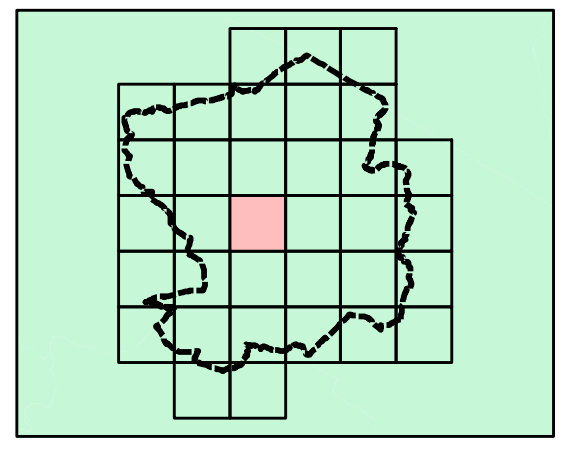


NOTES

The climate change maps show the potential impacts that climate change may have on river flows and, subsequently, on flood extents. Where models exist in the study area, a change factor, taken from the EA's "Adapting to Climate Change: Advice for Flood and Coastal Erosion Risk Management Authorities" document, was applied to the 1 in 100 year flows and the models re-run to produce the 1 in 100 year, plus climate change, flood extent.

Where no detailed models are available, and flood zones are based on generalised modelling, no climate change mapping is currently available. Climate change modelling will be required as part of a detailed Flood Risk assessment should development be undertaken in these areas.

Key Plan



Legend

-  Watercourses
-  Flood Zone 3a Climate Change
-  No climate change modelling available
-  Nuneaton and Bedworth Borough

Reproduced from Ordnance Survey mapping with the permission of Ordnance Survey on behalf of the Controller of Her Majesty's Stationary Office. © Crown copyright. Unauthorised reproduction infringes Crown copyright and may lead to prosecution or civil proceedings. Nuneaton and Bedworth Borough Council Licence:100018416 (2012)



REF	DATE	COMMENTS
A	Sept 2012	Draft
B	Nov 2012	Final
C		

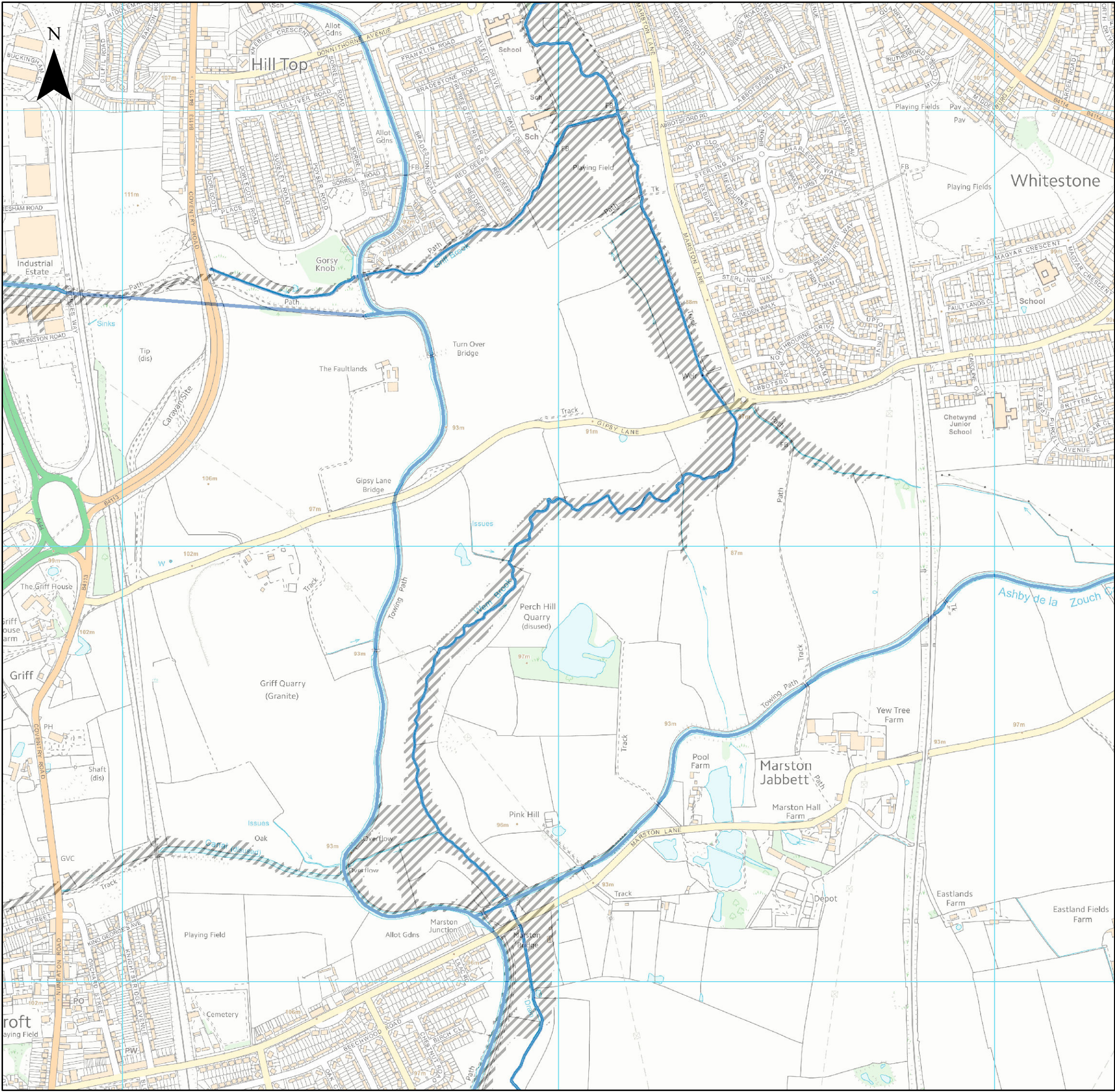
APPENDIX C

CLIMATE CHANGE FLOOD OUTLINES

Sheet No: 17 of 34 Index Number:NBBC_IND17

This document is the property of Jeremy Benn Associates Ltd. It shall not be reproduced in whole or in part, nor disclosed to a third party, without the permission of Jeremy Benn Associates Ltd.



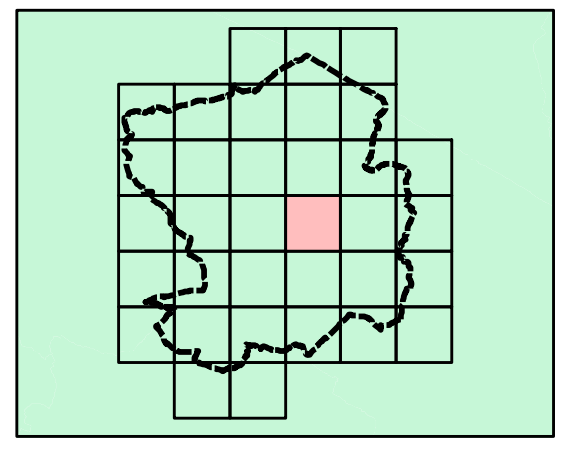


NOTES


The climate change maps show the potential impacts that climate change may have on river flows and, subsequently, on flood extents. Where models exist in the study area, a change factor, taken from the EA's "Adapting to Climate Change: Advice for Flood and Coastal Erosion Risk Management Authorities" document, was applied to the 1 in 100 year flows and the models re-run to produce the 1 in 100 year, plus climate change, flood extent.

Where no detailed models are available, and flood zones are based on generalised modelling, no climate change mapping is currently available. Climate change modelling will be required as part of a detailed Flood Risk assessment should development be undertaken in these areas.

Key Plan



Legend

-  Watercourses
-  Flood Zone 3a Climate Change
-  No climate change modelling available
-  Nuneaton and Bedworth Borough

Reproduced from Ordnance Survey mapping with the permission of Ordnance Survey on behalf of the Controller of Her Majesty's Stationary Office. © Crown copyright. Unauthorised reproduction infringes Crown copyright and may lead to prosecution or civil proceedings. Nuneaton and Bedworth Borough Council Licence:100018416 (2012)



REF	DATE	COMMENTS
A	Sept 2012	Draft
B	Nov 2012	Final
C		

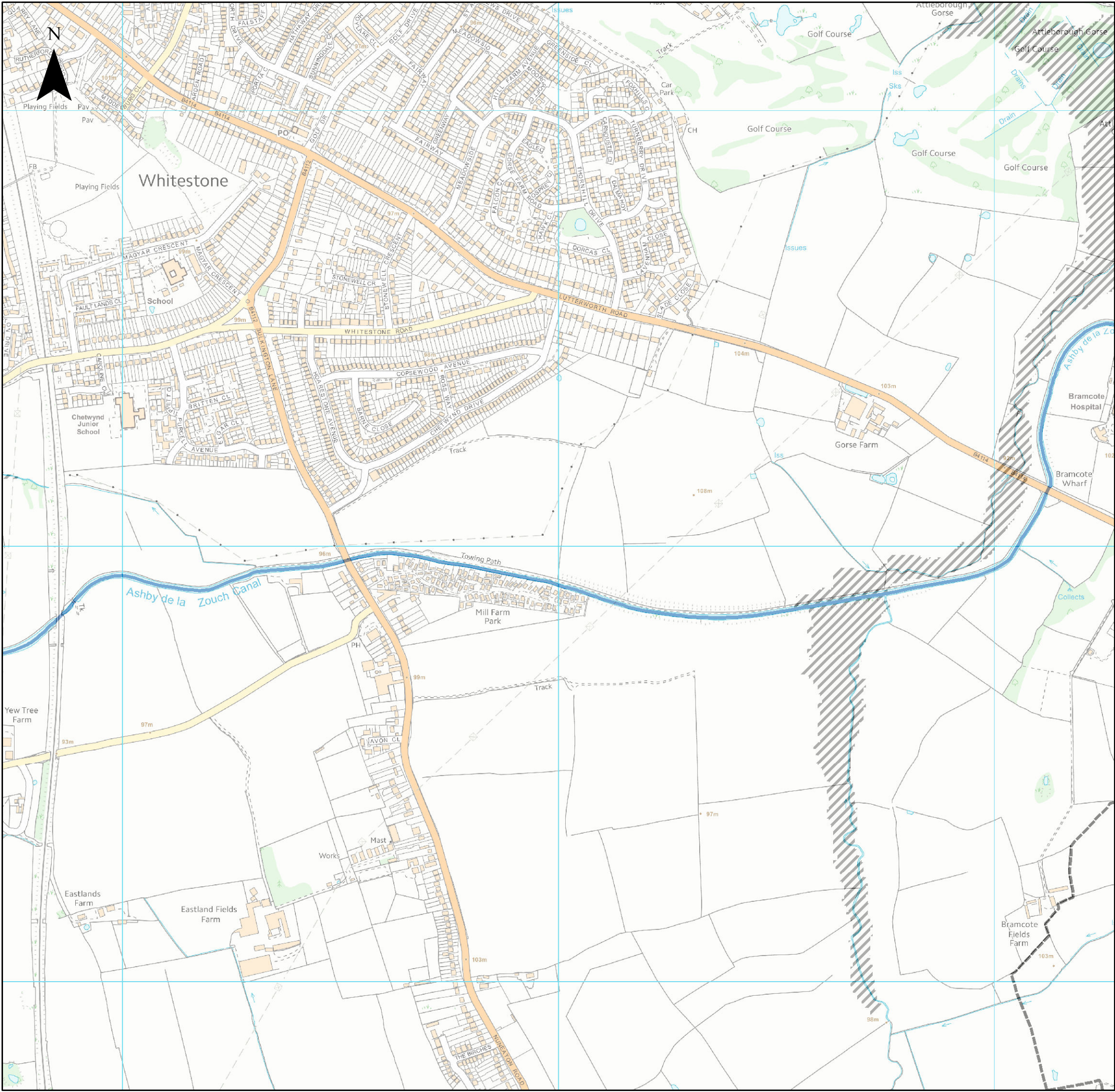
APPENDIX C

CLIMATE CHANGE FLOOD OUTLINES

Sheet No: 18 of 34 Index Number:NBBC_IND18

This document is the property of Jeremy Benn Associates Ltd. It shall not be reproduced in whole or in part, nor disclosed to a third party, without the permission of Jeremy Benn Associates Ltd.



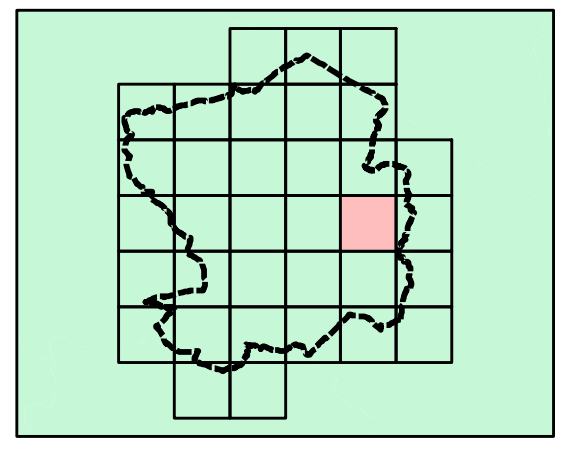


NOTES

The climate change maps show the potential impacts that climate change may have on river flows and, subsequently, on flood extents. Where models exist in the study area, a change factor, taken from the EA's "Adapting to Climate Change: Advice for Flood and Coastal Erosion Risk Management Authorities" document, was applied to the 1 in 100 year flows and the models re-run to produce the 1 in 100 year, plus climate change, flood extent.

Where no detailed models are available, and flood zones are based on generalised modelling, no climate change mapping is currently available. Climate change modelling will be required as part of a detailed Flood Risk assessment should development be undertaken in these areas.

Key Plan



Legend

-  Watercourses
-  Flood Zone 3a Climate Change
-  No climate change modelling available
-  Nuneaton and Bedworth Borough

Reproduced from Ordnance Survey mapping with the permission of Ordnance Survey on behalf of the Controller of Her Majesty's Stationary Office. © Crown copyright. Unauthorised reproduction infringes Crown copyright and may lead to prosecution or civil proceedings. Nuneaton and Bedworth Borough Council Licence:100018416 (2012)



REF	DATE	COMMENTS
A	Sept 2012	Draft
B	Nov 2012	Final
C		

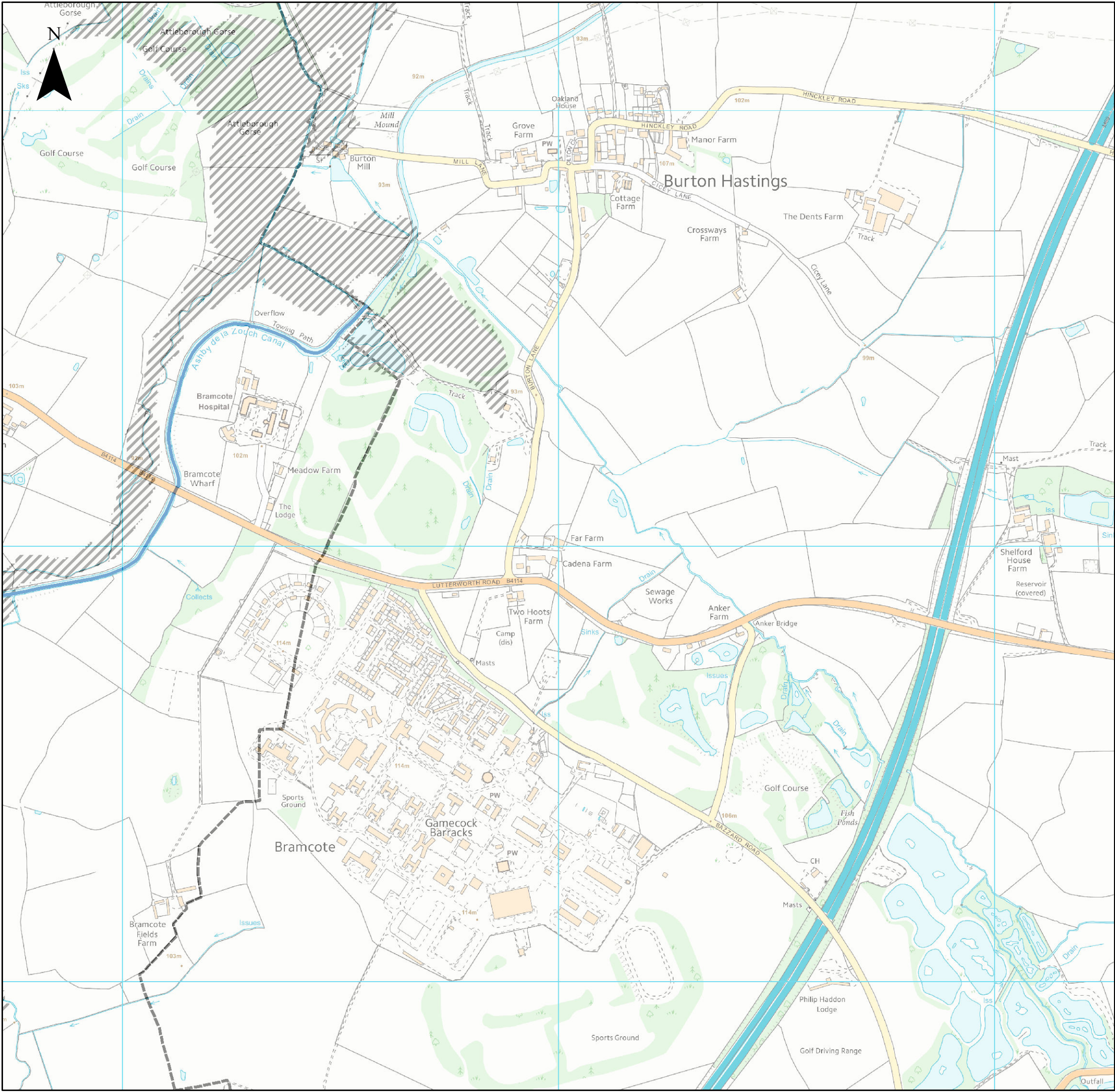
APPENDIX C

CLIMATE CHANGE FLOOD OUTLINES

Sheet No: 19 of 34 Index Number:NBBC_IND19

This document is the property of Jeremy Benn Associates Ltd. It shall not be reproduced in whole or in part, nor disclosed to a third party, without the permission of Jeremy Benn Associates Ltd.



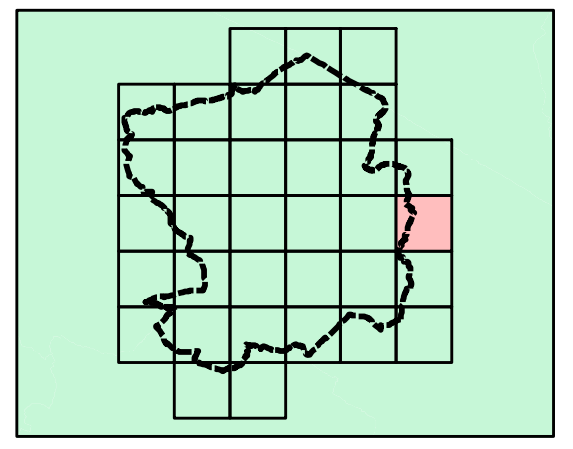


NOTES

The climate change maps show the potential impacts that climate change may have on river flows and, subsequently, on flood extents. Where models exist in the study area, a change factor, taken from the EA's "Adapting to Climate Change: Advice for Flood and Coastal Erosion Risk Management Authorities" document, was applied to the 1 in 100 year flows and the models re-run to produce the 1 in 100 year, plus climate change, flood extent.

Where no detailed models are available, and flood zones are based on generalised modelling, no climate change mapping is currently available. Climate change modelling will be required as part of a detailed Flood Risk assessment should development be undertaken in these areas.

Key Plan



Legend

-  Watercourses
-  Flood Zone 3a Climate Change
-  No climate change modelling available
-  Nuneaton and Bedworth Borough

Reproduced from Ordnance Survey mapping with the permission of Ordnance Survey on behalf of the Controller of Her Majesty's Stationary Office. © Crown copyright. Unauthorised reproduction infringes Crown copyright and may lead to prosecution or civil proceedings. Nuneaton and Bedworth Borough Council Licence:100018416 (2012)



REF	DATE	COMMENTS
A	Sept 2012	Draft
B	Nov 2012	Final
C		

APPENDIX C

CLIMATE CHANGE FLOOD OUTLINES

Sheet No: 20 of 34 Index Number:NBBC_IND20

This document is the property of Jeremy Benn Associates Ltd. It shall not be reproduced in whole or in part, nor disclosed to a third party, without the permission of Jeremy Benn Associates Ltd.



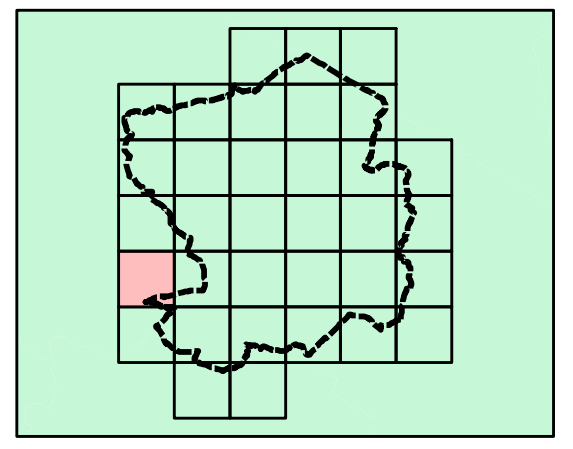


NOTES


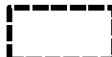
The climate change maps show the potential impacts that climate change may have on river flows and, subsequently, on flood extents. Where models exist in the study area, a change factor, taken from the EA's "Adapting to Climate Change: Advice for Flood and Coastal Erosion Risk Management Authorities" document, was applied to the 1 in 100 year flows and the models re-run to produce the 1 in 100 year, plus climate change, flood extent.

Where no detailed models are available, and flood zones are based on generalised modelling, no climate change mapping is currently available. Climate change modelling will be required as part of a detailed Flood Risk assessment should development be undertaken in these areas.

Key Plan



Legend

-  Watercourses
-  Flood Zone 3a Climate Change
-  No climate change modelling available
-  Nuneaton and Bedworth Borough

Reproduced from Ordnance Survey mapping with the permission of Ordnance Survey on behalf of the Controller of Her Majesty's Stationary Office. © Crown copyright. Unauthorised reproduction infringes Crown copyright and may lead to prosecution or civil proceedings. Nuneaton and Bedworth Borough Council Licence:100018416 (2012)



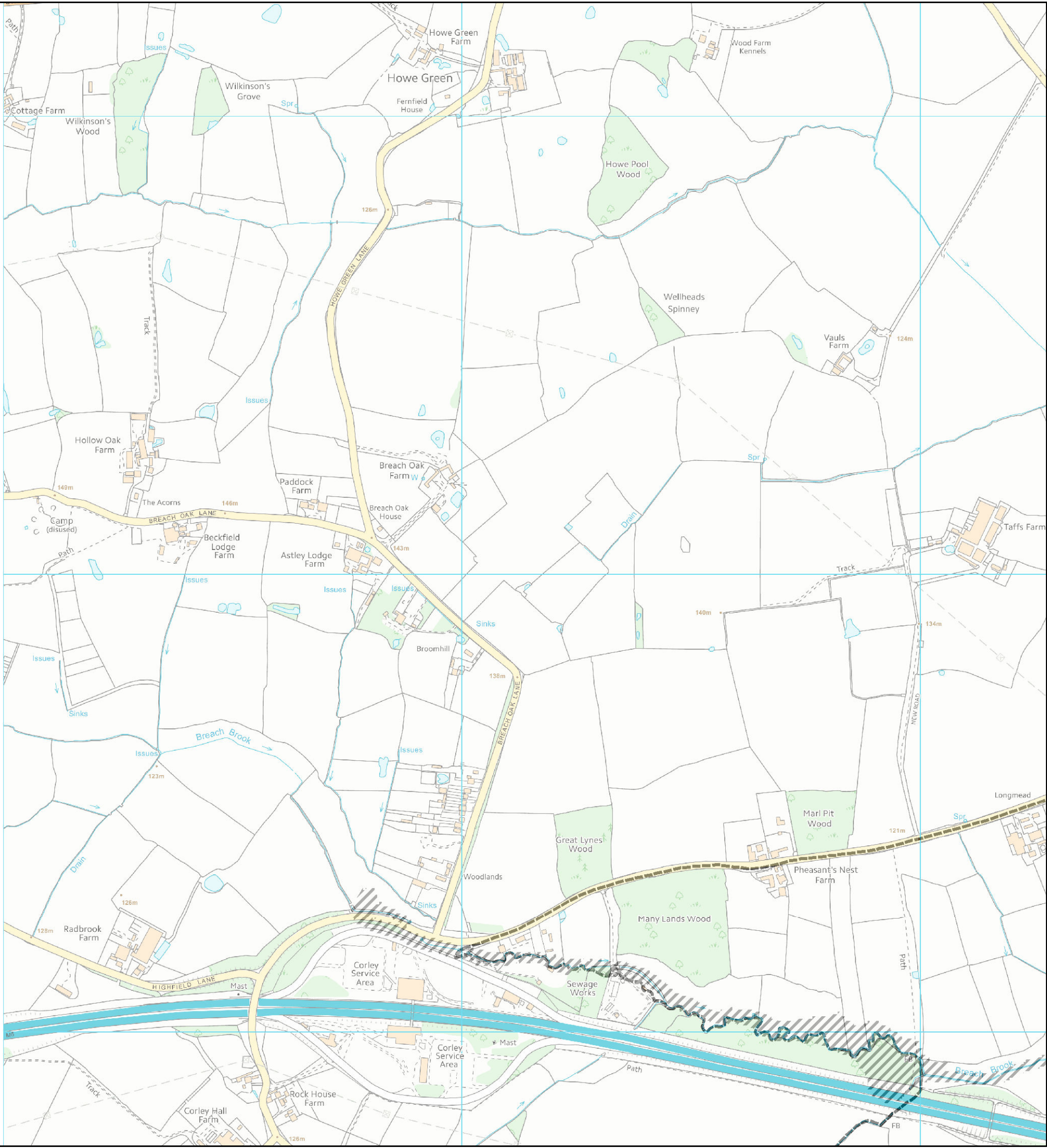
REF	DATE	COMMENTS
A	Sept 2012	Draft
B	Nov 2012	Final
C		

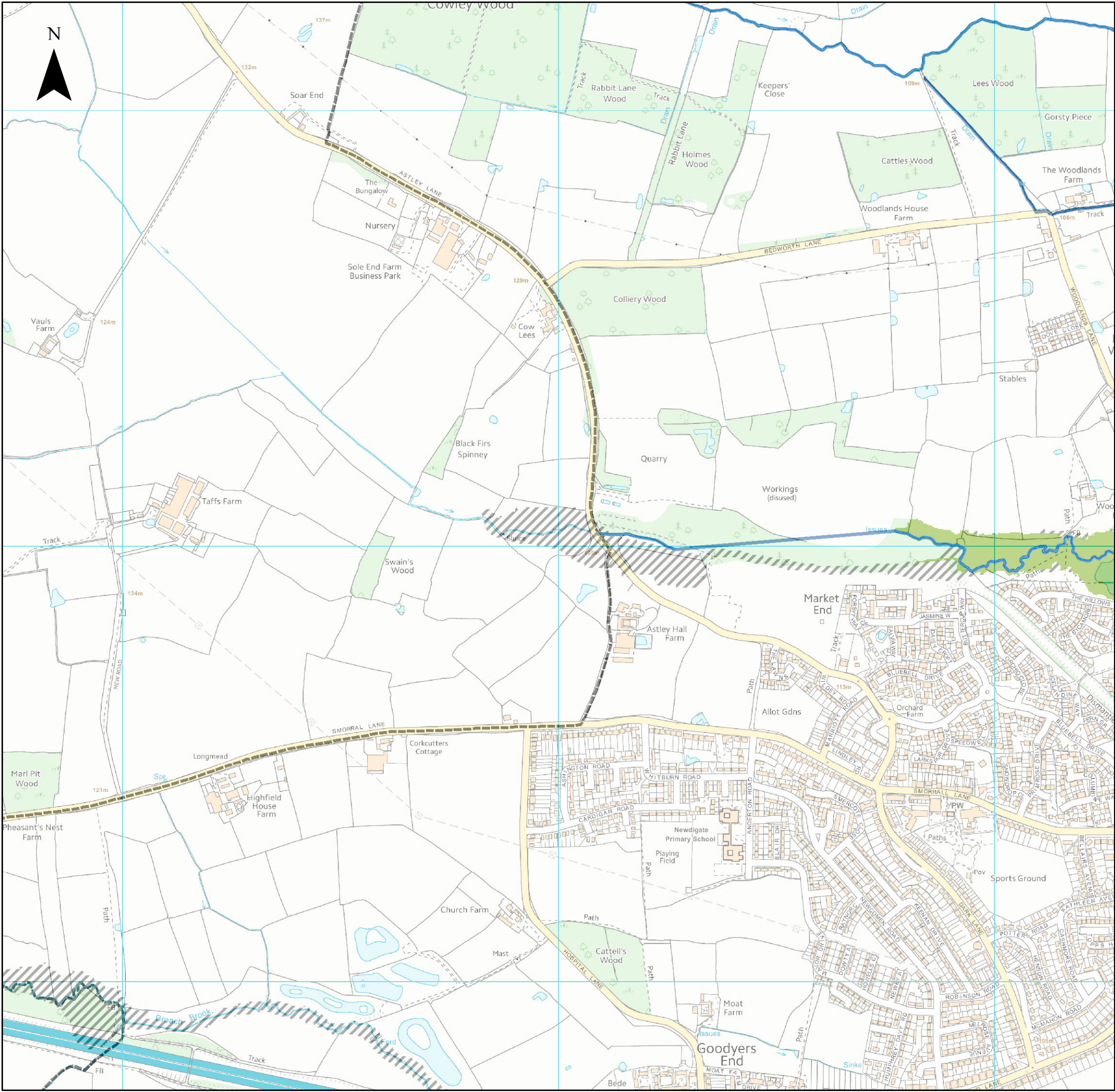
APPENDIX C

CLIMATE CHANGE FLOOD OUTLINES

Sheet No: 21 of 34 Index Number:NBBC_IND21

This document is the property of Jeremy Benn Associates Ltd. It shall not be reproduced in whole or in part, nor disclosed to a third party, without the permission of Jeremy Benn Associates Ltd.



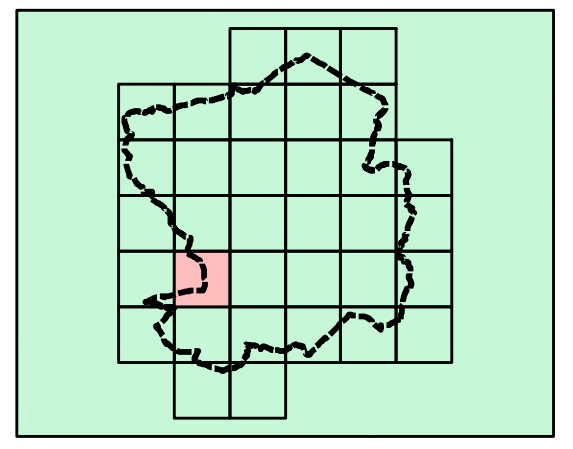


NOTES


The climate change maps show the potential impacts that climate change may have on river flows and, subsequently, on flood extents. Where models exist in the study area, a change factor, taken from the EA's "Adapting to Climate Change: Advice for Flood and Coastal Erosion Risk Management Authorities" document, was applied to the 1 in 100 year flows and the models re-run to produce the 1 in 100 year, plus climate change, flood extent.

Where no detailed models are available, and flood zones are based on generalised modelling, no climate change mapping is currently available. Climate change modelling will be required as part of a detailed Flood Risk assessment should development be undertaken in these areas.

Key Plan



Legend

-  Watercourses
-  Flood Zone 3a Climate Change
-  No climate change modelling available
-  Nuneaton and Bedworth Borough

Reproduced from Ordnance Survey mapping with the permission of Ordnance Survey on behalf of the Controller of Her Majesty's Stationary Office. © Crown copyright. Unauthorised reproduction infringes Crown copyright and may lead to prosecution or civil proceedings. Nuneaton and Bedworth Borough Council Licence:100018416 (2012)



REF	DATE	COMMENTS
A	Sept 2012	Draft
B	Nov 2012	Final
C		

APPENDIX C

CLIMATE CHANGE FLOOD OUTLINES

Sheet No: 22 of 34 Index Number: NBBC_IND22

This document is the property of Jeremy Benn Associates Ltd. It shall not be reproduced in whole or in part, nor disclosed to a third party, without the permission of Jeremy Benn Associates Ltd.



JBA
consulting

Offices at

Atherstone

Doncaster

Edinburgh

Haywards Heath

Limerick

Newcastle upon Tyne

Newport

Saltaire

Skipton

Tadcaster

Thirsk

Wallingford

Warrington

Registered Office

South Barn

Broughton Hall

SKIPTON

North Yorkshire

BD23 3AE

t:+44(0)1756 799919

e:info@jbaconsulting.com

Jeremy Benn Associates Ltd
Registered in England 3246693



Visit our website
www.jbaconsulting.com