

Nuneaton and Bedworth Borough Council Strategic Flood Risk Assessment - Level 2

Appendix F: Surface Water Mapping

200 years – NBBC_IND12 to NBBC_IND23

November 2012

Nuneaton and Bedworth Borough Council
Town Hall
Coton Road
NUNEATON
Warwickshire
CV11 5AA

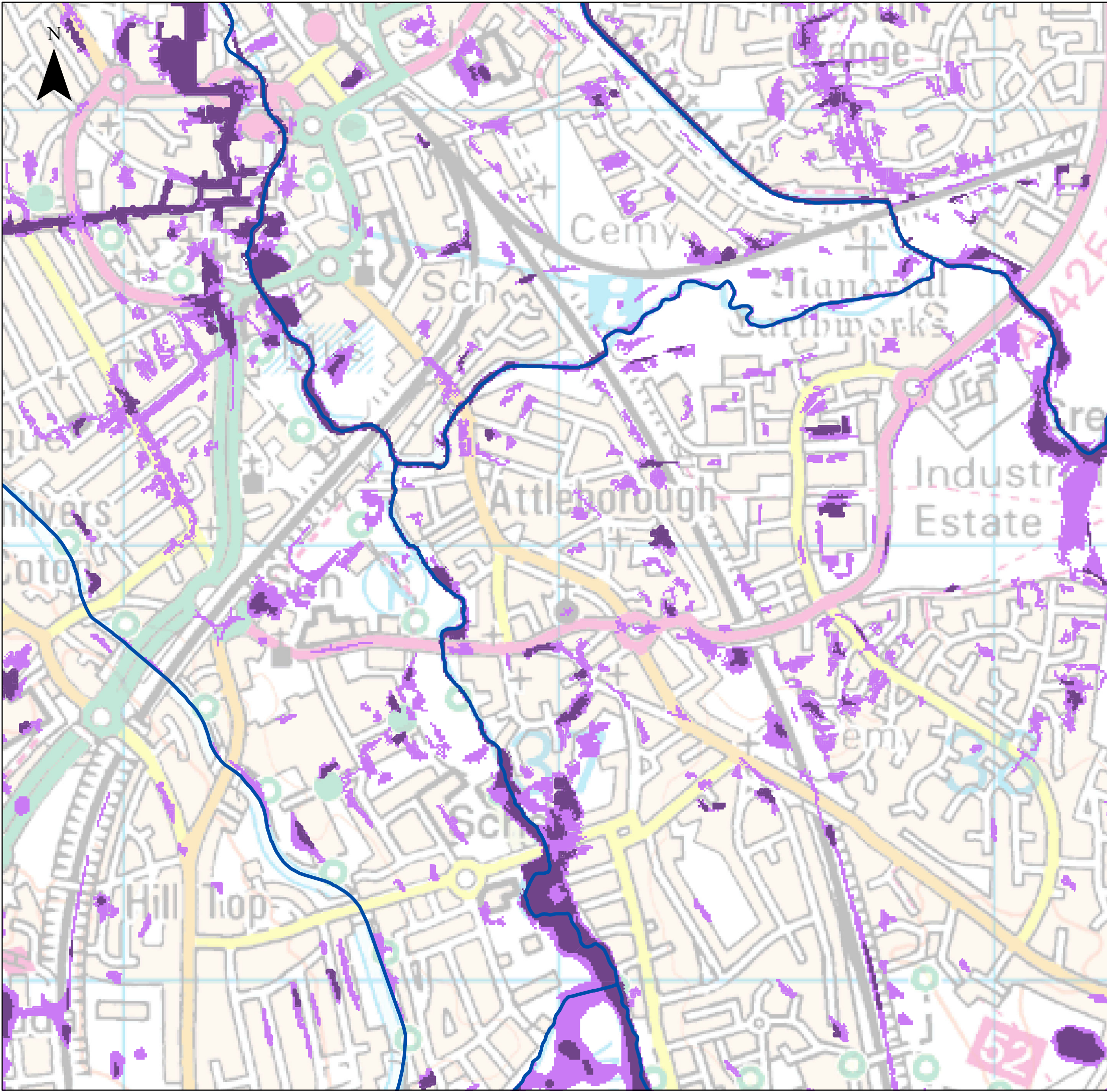




This page is intentionally left blank

F Surface Water Mapping: 200 Years





NOTES

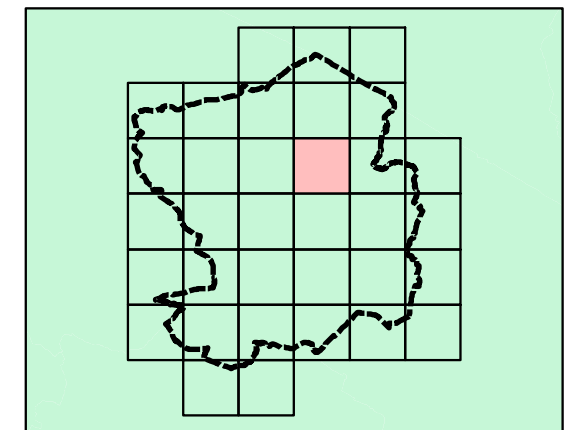
The Warwickshire PFRA (2011) describes the Flood Maps for Surface Water (FMfSW) as the locally agreed maps for surface water flooding.

The FMfSW shows the flooding that takes place from the 'surface runoff' generated by rainwater (including snow and other precipitation) which:
 (a) is on the surface of the ground (whether or not it is moving), and
 (b) has not yet entered a watercourse, drainage system or public sewer.

The Flood Map for Surface Water will pick out natural drainage channels, rivers, low areas in floodplains, and flow paths between buildings. But it will only indicate flooding caused by local rainfall.

NOTE: The Flood Map for Surface Water shows predictions of flooded areas but does not show whether individual properties will be affected by surface water flooding or have been affected in the past. The Flood Map for Surface Water should not be used to predict if individual properties will flood.

Key Plan



Legend

Surface Water Flood Map - 200 year

-  > 0.3m
-  > 0.1m
-  Watercourses
-  Nuneaton and Bedworth Borough

Reproduced from Ordnance Survey mapping with the permission of Ordnance Survey on behalf of the Controller of Her Majesty's Stationery Office. © Crown copyright. Unauthorised reproduction infringes Crown copyright and may lead to prosecution or civil proceedings. Nuneaton and Bedworth Borough Council Licence: 100018416 (2012)



REF	DATE	COMMENTS
A	Sept 2012	Draft
B	Nov 2012	Final
C		

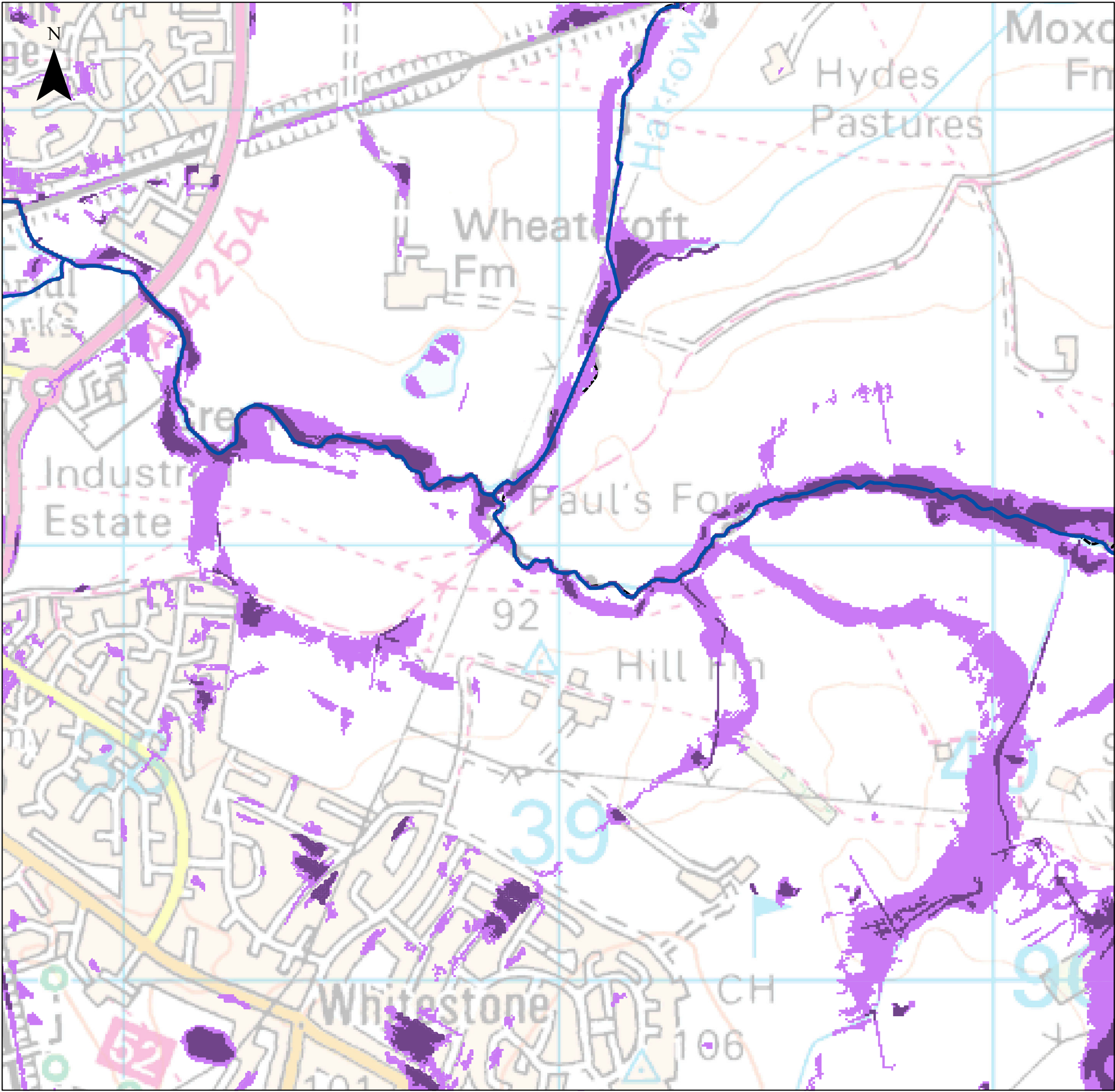
APPENDIX F

SURFACE WATER MAPS - 200 YEARS

Sheet No: 12 of 34 Index No: NBBC_IND12

This document is the property of Jeremy Benn Associates Ltd. It shall not be reproduced in whole or in part, nor disclosed to a third party, without the permission of Jeremy Benn Associates Ltd.





NOTES

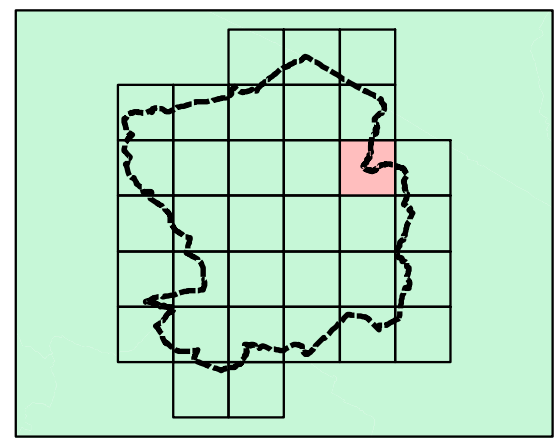
The Warwickshire PFRA (2011) describes the Flood Maps for Surface Water (FMfSW) as the locally agreed maps for surface water flooding.

The FMfSW shows the flooding that takes place from the 'surface runoff' generated by rainwater (including snow and other precipitation) which:
 (a) is on the surface of the ground (whether or not it is moving), and
 (b) has not yet entered a watercourse, drainage system or public sewer.

The Flood Map for Surface Water will pick out natural drainage channels, rivers, low areas in floodplains, and flow paths between buildings. But it will only indicate flooding caused by local rainfall.

NOTE: The Flood Map for Surface Water shows predictions of flooded areas but does not show whether individual properties will be affected by surface water flooding or have been affected in the past. The Flood Map for Surface Water should not be used to predict if individual properties will flood.

Key Plan



Legend

Surface Water Flood Map - 200 year

- > 0.3m
- > 0.1m
- Watercourses
- Nuneaton and Bedworth Borough

Reproduced from Ordnance Survey mapping with the permission of Ordnance Survey on behalf of the Controller of Her Majesty's Stationery Office. © Crown copyright. Unauthorised reproduction infringes Crown copyright and may lead to prosecution or civil proceedings. Nuneaton and Bedworth Borough Council Licence: 100018416 (2012)



REF	DATE	COMMENTS
A	Sept 2012	Draft
B	Nov 2012	Final
C		

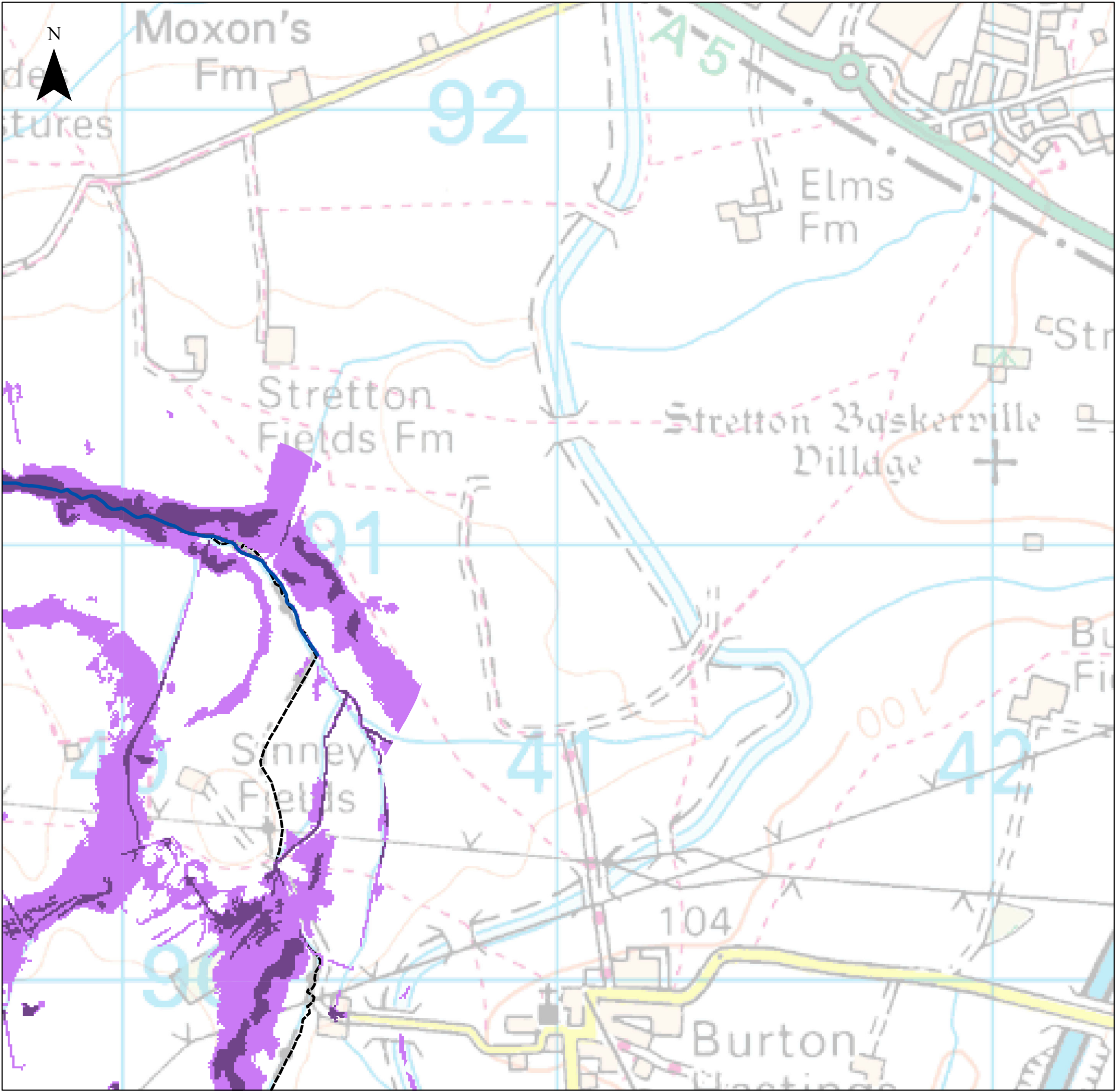
APPENDIX F

SURFACE WATER MAPS - 200 YEARS

Sheet No: 13 of 34 Index No: NBBC_IND13

This document is the property of Jeremy Benn Associates Ltd. It shall not be reproduced in whole or in part, nor disclosed to a third party, without the permission of Jeremy Benn Associates Ltd.





NOTES

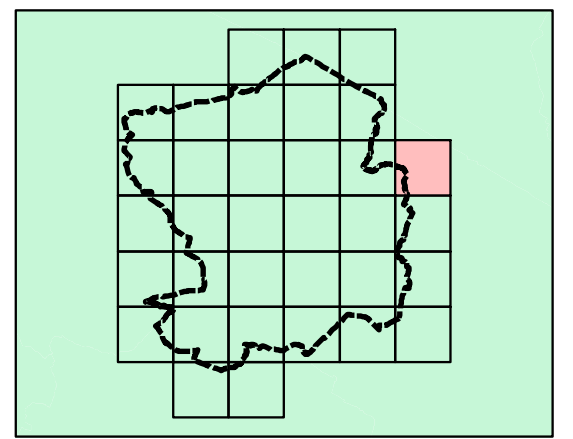
The Warwickshire PFRA (2011) describes the Flood Maps for Surface Water (FMfSW) as the locally agreed maps for surface water flooding.

The FMfSW shows the flooding that takes place from the 'surface runoff' generated by rainwater (including snow and other precipitation) which:
 (a) is on the surface of the ground (whether or not it is moving), and
 (b) has not yet entered a watercourse, drainage system or public sewer.

The Flood Map for Surface Water will pick out natural drainage channels, rivers, low areas in floodplains, and flow paths between buildings. But it will only indicate flooding caused by local rainfall.

NOTE: The Flood Map for Surface Water shows predictions of flooded areas but does not show whether individual properties will be affected by surface water flooding or have been affected in the past. The Flood Map for Surface Water should not be used to predict if individual properties will flood.

Key Plan



Legend

Surface Water Flood Map - 200 year

- > 0.3m
- > 0.1m
- Watercourses
- Nuneaton and Bedworth Borough

Reproduced from Ordnance Survey mapping with the permission of Ordnance Survey on behalf of the Controller of Her Majesty's Stationery Office. © Crown copyright. Unauthorised reproduction infringes Crown copyright and may lead to prosecution or civil proceedings. Nuneaton and Bedworth Borough Council Licence: 100018416 (2012)



REF	DATE	COMMENTS
A	Sept 2012	Draft
B	Nov 2012	Final
C		

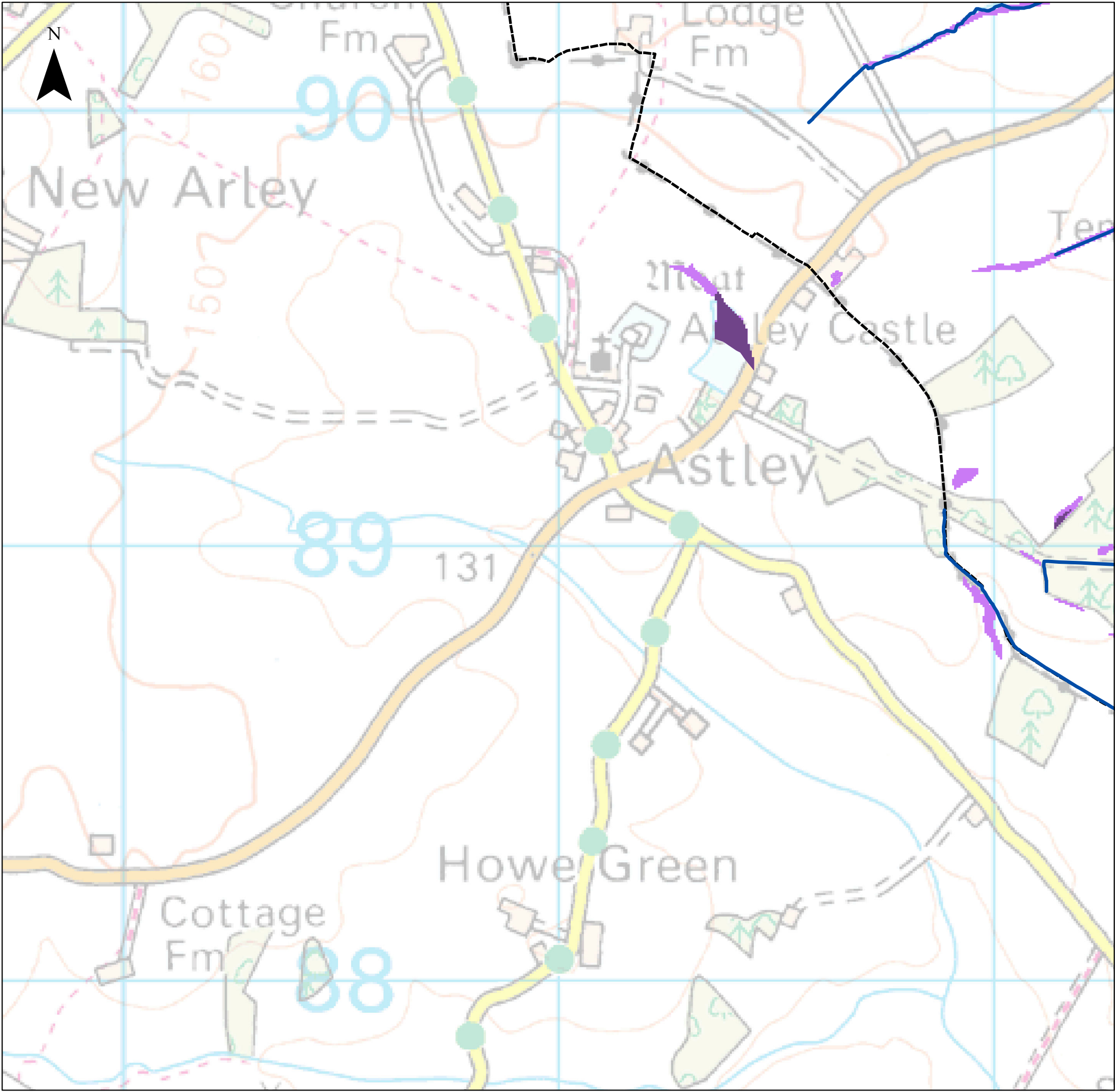
APPENDIX F

SURFACE WATER MAPS - 200 YEARS

Sheet No: 14 of 34 Index No: NBBC_IND14

This document is the property of Jeremy Benn Associates Ltd. It shall not be reproduced in whole or in part, nor disclosed to a third party, without the permission of Jeremy Benn Associates Ltd.





NOTES

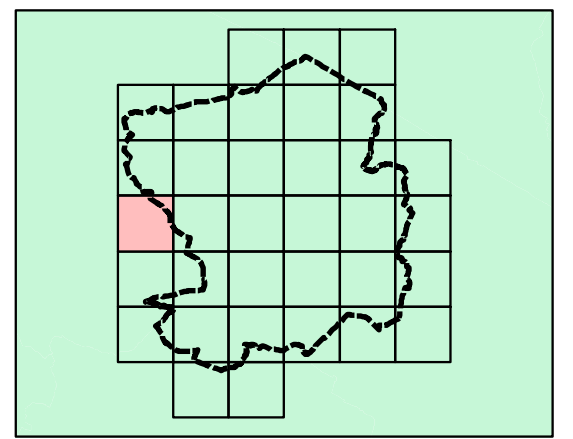
The Warwickshire PFRA (2011) describes the Flood Maps for Surface Water (FMfSW) as the locally agreed maps for surface water flooding.

The FMfSW shows the flooding that takes place from the 'surface runoff' generated by rainwater (including snow and other precipitation) which:
 (a) is on the surface of the ground (whether or not it is moving), and
 (b) has not yet entered a watercourse, drainage system or public sewer.

The Flood Map for Surface Water will pick out natural drainage channels, rivers, low areas in floodplains, and flow paths between buildings. But it will only indicate flooding caused by local rainfall.

NOTE: The Flood Map for Surface Water shows predictions of flooded areas but does not show whether individual properties will be affected by surface water flooding or have been affected in the past. The Flood Map for Surface Water should not be used to predict if individual properties will flood.

Key Plan



Legend

Surface Water Flood Map - 200 year

- > 0.3m
- > 0.1m
- Watercourses
- Nuneaton and Bedworth Borough

Reproduced from Ordnance Survey mapping with the permission of Ordnance Survey on behalf of the Controller of Her Majesty's Stationery Office. © Crown copyright. Unauthorised reproduction infringes Crown copyright and may lead to prosecution or civil proceedings. Nuneaton and Bedworth Borough Council Licence: 100018416 (2012)



REF	DATE	COMMENTS
A	Sept 2012	Draft
B	Nov 2012	Final
C		

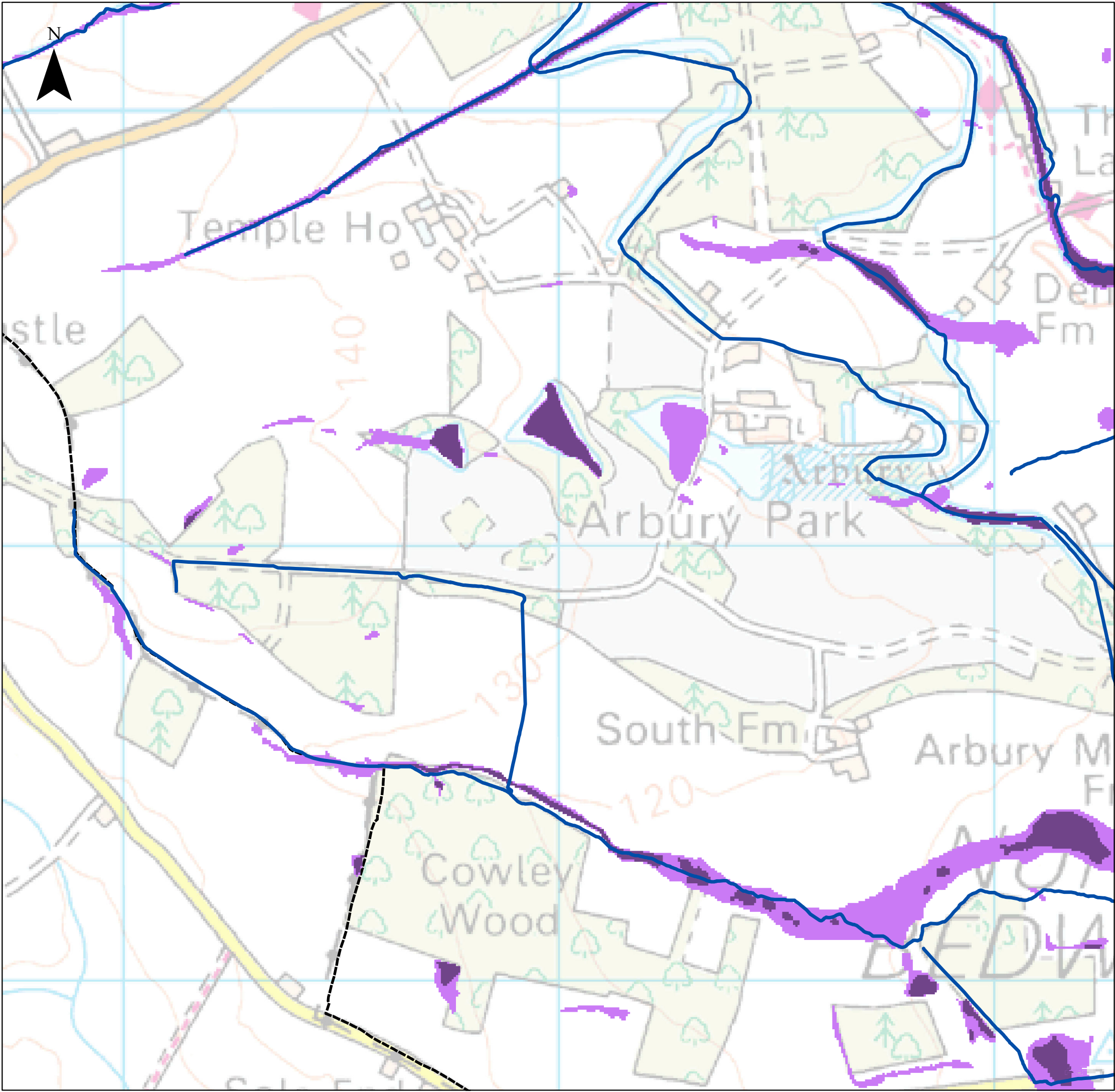
APPENDIX F

SURFACE WATER MAPS - 200 YEARS

Sheet No: 15 of 34 Index No: NBBC_IND15

This document is the property of Jeremy Benn Associates Ltd. It shall not be reproduced in whole or in part, nor disclosed to a third party, without the permission of Jeremy Benn Associates Ltd.





NOTES

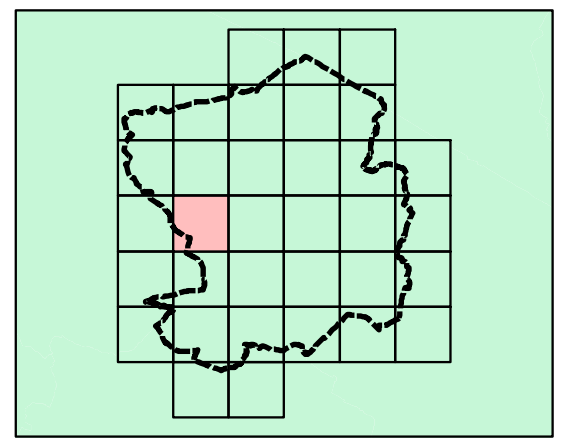
The Warwickshire PFRA (2011) describes the Flood Maps for Surface Water (FMfSW) as the locally agreed maps for surface water flooding.

The FMfSW shows the flooding that takes place from the 'surface runoff' generated by rainwater (including snow and other precipitation) which:
 (a) is on the surface of the ground (whether or not it is moving), and
 (b) has not yet entered a watercourse, drainage system or public sewer.

The Flood Map for Surface Water will pick out natural drainage channels, rivers, low areas in floodplains, and flow paths between buildings. But it will only indicate flooding caused by local rainfall.

NOTE: The Flood Map for Surface Water shows predictions of flooded areas but does not show whether individual properties will be affected by surface water flooding or have been affected in the past. The Flood Map for Surface Water should not be used to predict if individual properties will flood.

Key Plan



Legend

Surface Water Flood Map - 200 year

- > 0.3m
- > 0.1m
- Watercourses
- Nuneaton and Bedworth Borough

Reproduced from Ordnance Survey mapping with the permission of Ordnance Survey on behalf of the Controller of Her Majesty's Stationery Office. © Crown copyright. Unauthorised reproduction infringes Crown copyright and may lead to prosecution or civil proceedings. Nuneaton and Bedworth Borough Council Licence: 100018416 (2012)



REF	DATE	COMMENTS
A	Sept 2012	Draft
B	Nov 2012	Final
C		

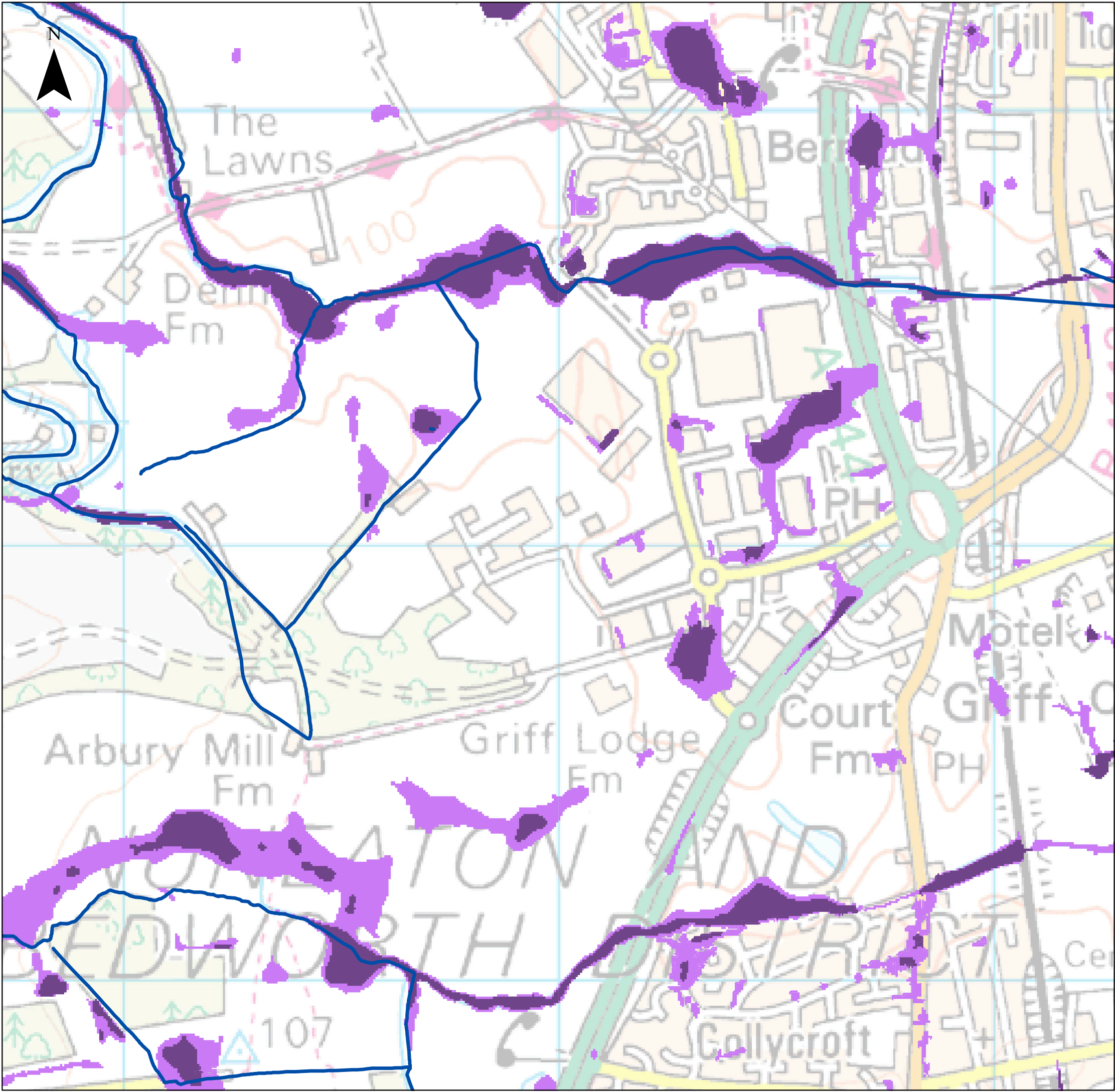
APPENDIX F

SURFACE WATER MAPS - 200 YEARS

Sheet No: 16 of 34 Index No: NBBC_IND16

This document is the property of Jeremy Benn Associates Ltd. It shall not be reproduced in whole or in part, nor disclosed to a third party, without the permission of Jeremy Benn Associates Ltd.





NOTES

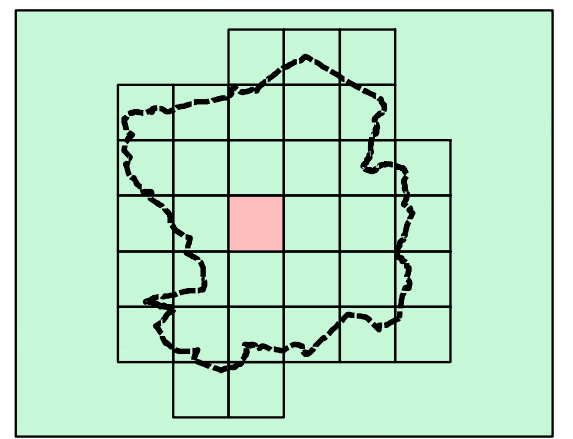
The Warwickshire PFRA (2011) describes the Flood Maps for Surface Water (FMfSW) as the locally agreed maps for surface water flooding.

The FMfSW shows the flooding that takes place from the 'surface runoff' generated by rainwater (including snow and other precipitation) which:
 (a) is on the surface of the ground (whether or not it is moving), and
 (b) has not yet entered a watercourse, drainage system or public sewer.

The Flood Map for Surface Water will pick out natural drainage channels, rivers, low areas in floodplains, and flow paths between buildings. But it will only indicate flooding caused by local rainfall.

NOTE: The Flood Map for Surface Water shows predictions of flooded areas but does not show whether individual properties will be affected by surface water flooding or have been affected in the past. The Flood Map for Surface Water should not be used to predict if individual properties will flood.

Key Plan



Legend

Surface Water Flood Map - 200 year

- > 0.3m
- > 0.1m
- Watercourses
- Nuneaton and Bedworth Borough

Reproduced from Ordnance Survey mapping with the permission of Ordnance Survey on behalf of the Controller of Her Majesty's Stationery Office. © Crown copyright. Unauthorised reproduction infringes Crown copyright and may lead to prosecution or civil proceedings. Nuneaton and Bedworth Borough Council Licence: 100018416 (2012)



REF	DATE	COMMENTS
A	Sept 2012	Draft
B	Nov 2012	Final
C		

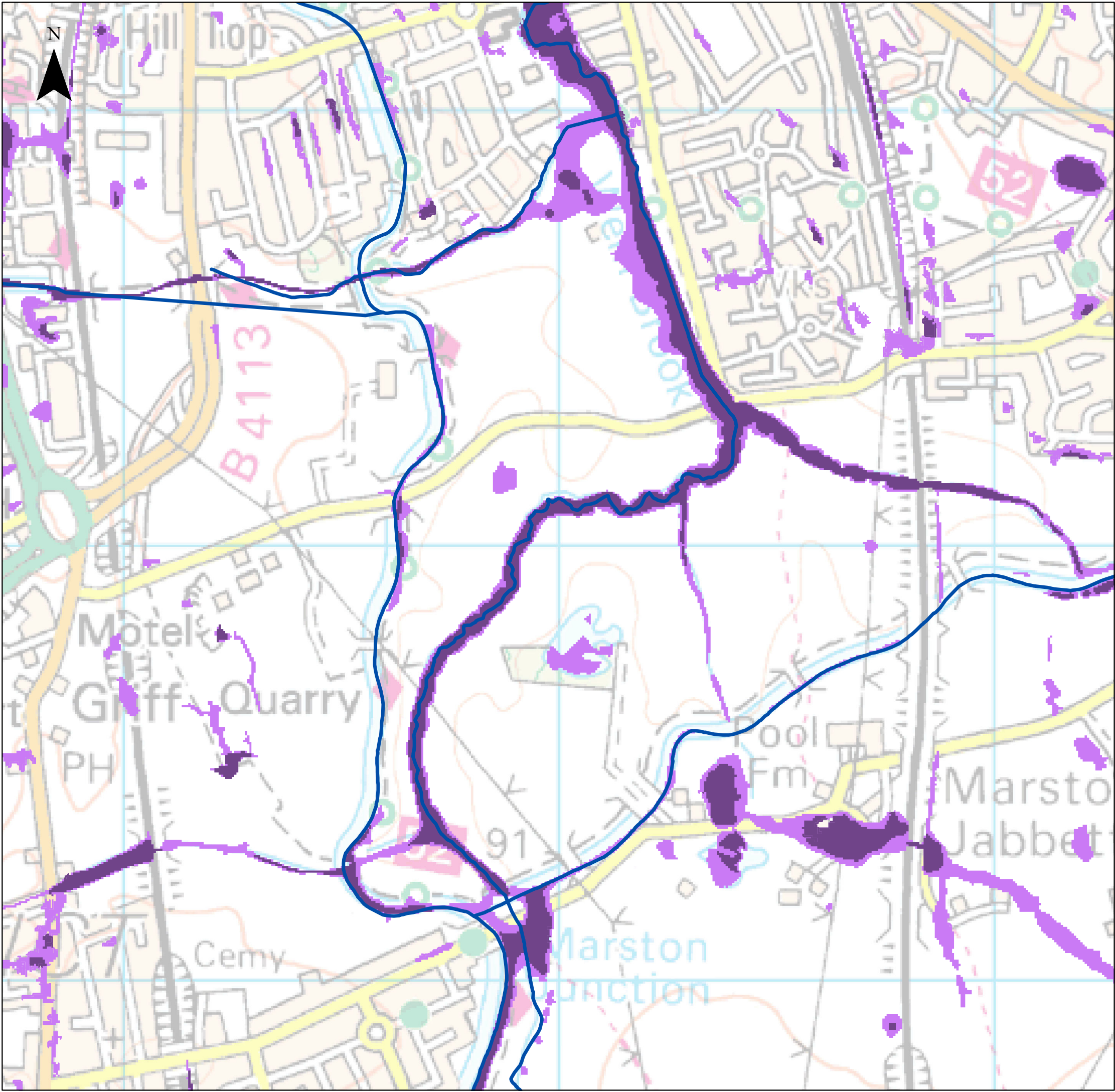
APPENDIX F

SURFACE WATER MAPS - 200 YEARS

Sheet No: 17 of 34 Index No: NBBC_IND17

This document is the property of Jeremy Benn Associates Ltd. It shall not be reproduced in whole or in part, nor disclosed to a third party, without the permission of Jeremy Benn Associates Ltd.





NOTES

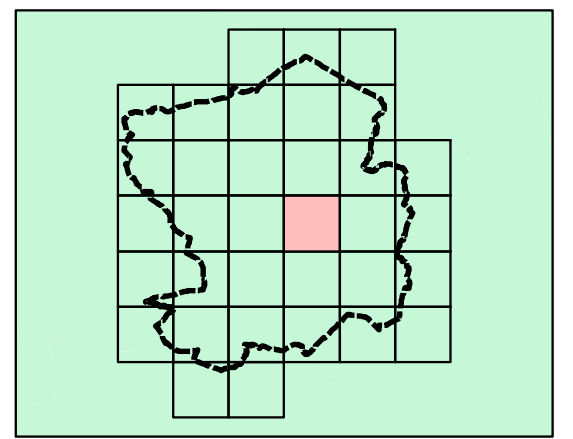
The Warwickshire PFRA (2011) describes the Flood Maps for Surface Water (FMfSW) as the locally agreed maps for surface water flooding.

The FMfSW shows the flooding that takes place from the 'surface runoff' generated by rainwater (including snow and other precipitation) which:
 (a) is on the surface of the ground (whether or not it is moving), and
 (b) has not yet entered a watercourse, drainage system or public sewer.

The Flood Map for Surface Water will pick out natural drainage channels, rivers, low areas in floodplains, and flow paths between buildings. But it will only indicate flooding caused by local rainfall.

NOTE: The Flood Map for Surface Water shows predictions of flooded areas but does not show whether individual properties will be affected by surface water flooding or have been affected in the past. The Flood Map for Surface Water should not be used to predict if individual properties will flood.

Key Plan



Legend

Surface Water Flood Map - 200 year

- > 0.3m
- > 0.1m
- Watercourses
- Nuneaton and Bedworth Borough

Reproduced from Ordnance Survey mapping with the permission of Ordnance Survey on behalf of the Controller of Her Majesty's Stationery Office. © Crown copyright. Unauthorised reproduction infringes Crown copyright and may lead to prosecution or civil proceedings. Nuneaton and Bedworth Borough Council Licence: 100018416 (2012)



REF	DATE	COMMENTS
A	Sept 2012	Draft
B	Nov 2012	Final
C		

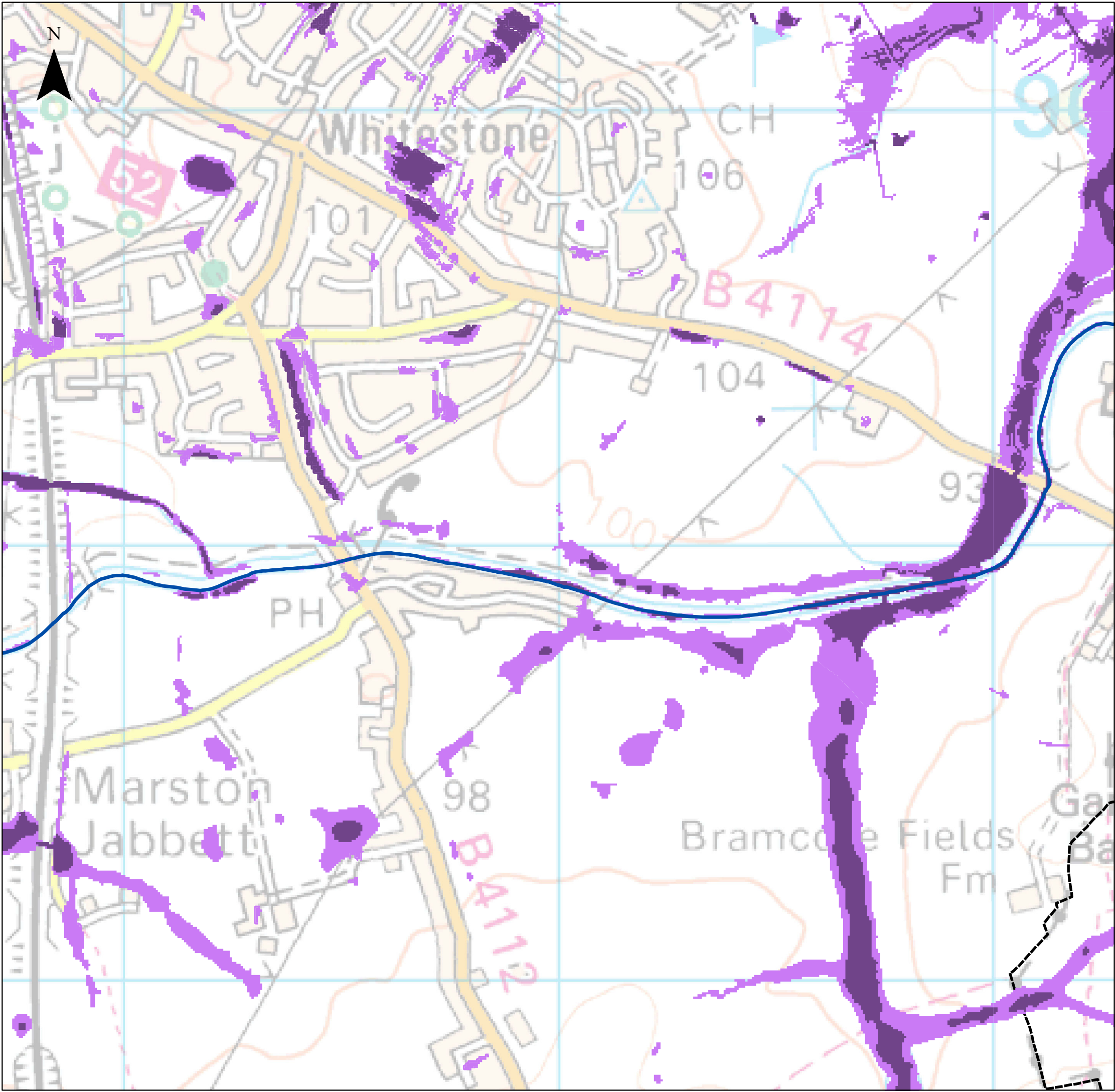
APPENDIX F

SURFACE WATER MAPS - 200 YEARS

Sheet No: 18 of 34 Index No: NBBC_IND18

This document is the property of Jeremy Benn Associates Ltd. It shall not be reproduced in whole or in part, nor disclosed to a third party, without the permission of Jeremy Benn Associates Ltd.





NOTES

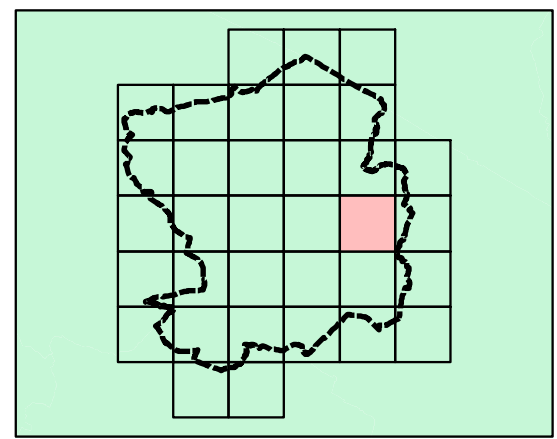
The Warwickshire PFRA (2011) describes the Flood Maps for Surface Water (FMfSW) as the locally agreed maps for surface water flooding.

The FMfSW shows the flooding that takes place from the 'surface runoff' generated by rainwater (including snow and other precipitation) which:
 (a) is on the surface of the ground (whether or not it is moving), and
 (b) has not yet entered a watercourse, drainage system or public sewer.

The Flood Map for Surface Water will pick out natural drainage channels, rivers, low areas in floodplains, and flow paths between buildings. But it will only indicate flooding caused by local rainfall.

NOTE: The Flood Map for Surface Water shows predictions of flooded areas but does not show whether individual properties will be affected by surface water flooding or have been affected in the past. The Flood Map for Surface Water should not be used to predict if individual properties will flood.

Key Plan



Legend

Surface Water Flood Map - 200 year

- > 0.3m
- > 0.1m
- Watercourses
- Nuneaton and Bedworth Borough

Reproduced from Ordnance Survey mapping with the permission of Ordnance Survey on behalf of the Controller of Her Majesty's Stationery Office. © Crown copyright. Unauthorised reproduction infringes Crown copyright and may lead to prosecution or civil proceedings. Nuneaton and Bedworth Borough Council Licence: 100018416 (2012)



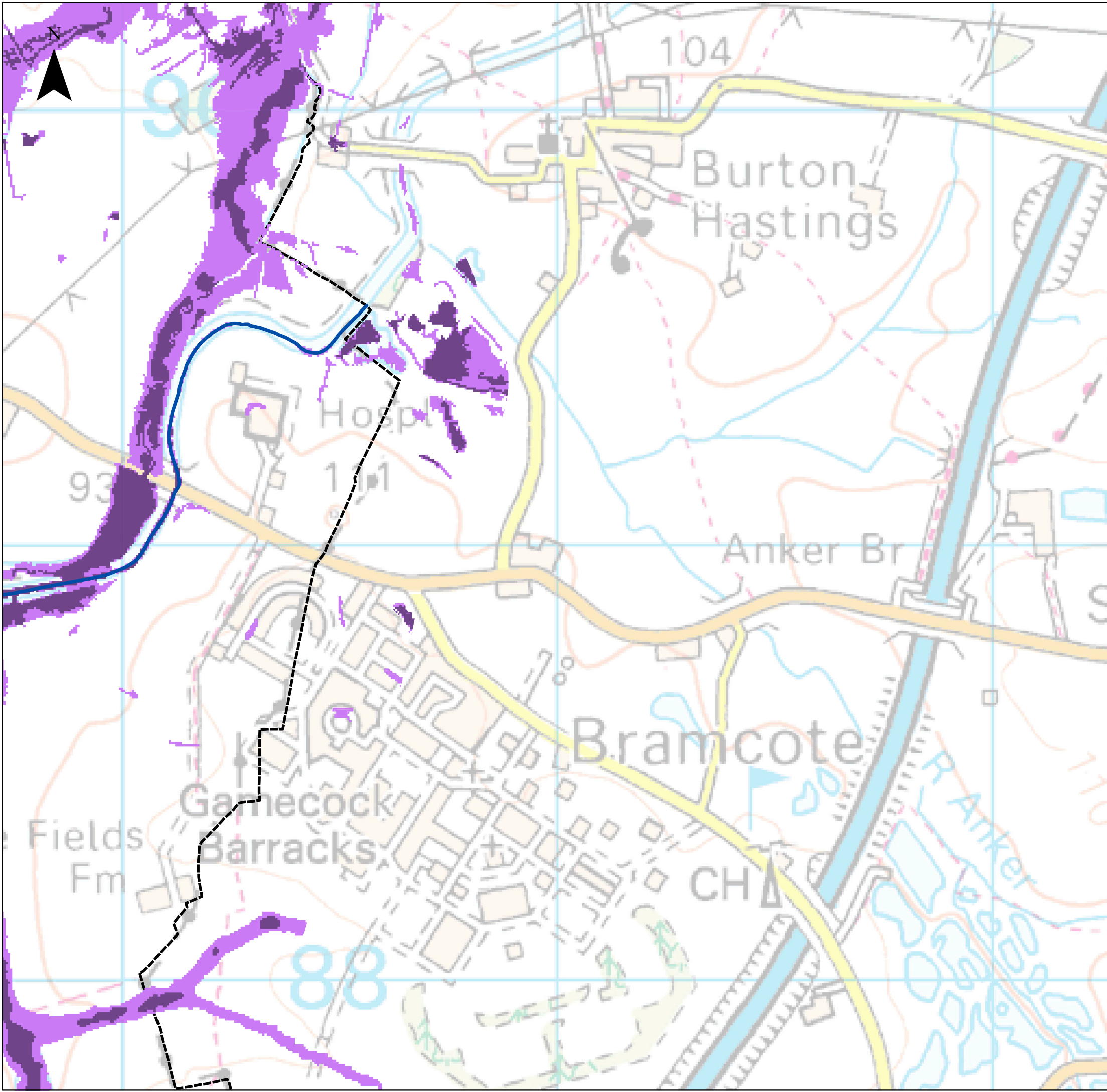
REF	DATE	COMMENTS
A	Sept 2012	Draft
B	Nov 2012	Final
C		

APPENDIX F

SURFACE WATER MAPS - 200 YEARS

Sheet No: 19 of 34 Index No: NBBC_IND19

This document is the property of Jeremy Benn Associates Ltd. It shall not be reproduced in whole or in part, nor disclosed to a third party, without the permission of Jeremy Benn Associates Ltd.



NOTES

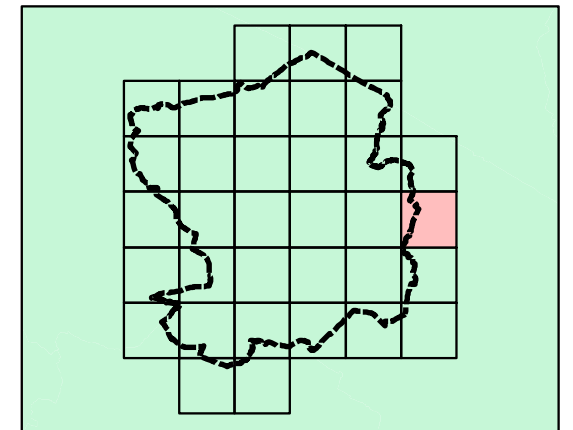
The Warwickshire PFRA (2011) describes the Flood Maps for Surface Water (FMfSW) as the locally agreed maps for surface water flooding.

The FMfSW shows the flooding that takes place from the 'surface runoff' generated by rainwater (including snow and other precipitation) which:
 (a) is on the surface of the ground (whether or not it is moving), and
 (b) has not yet entered a watercourse, drainage system or public sewer.

The Flood Map for Surface Water will pick out natural drainage channels, rivers, low areas in floodplains, and flow paths between buildings. But it will only indicate flooding caused by local rainfall.


NOTE: The Flood Map for Surface Water shows predictions of flooded areas but does not show whether individual properties will be affected by surface water flooding or have been affected in the past. The Flood Map for Surface Water should not be used to predict if individual properties will flood.

Key Plan



Legend

Surface Water Flood Map - 200 year

-  > 0.3m
-  > 0.1m
-  Watercourses
-  Nuneaton and Bedworth Borough

Reproduced from Ordnance Survey mapping with the permission of Ordnance Survey on behalf of the Controller of Her Majesty's Stationery Office. © Crown copyright. Unauthorised reproduction infringes Crown copyright and may lead to prosecution or civil proceedings. Nuneaton and Bedworth Borough Council Licence: 100018416 (2012)



REF	DATE	COMMENTS
A	Sept 2012	Draft
B	Nov 2012	Final
C		

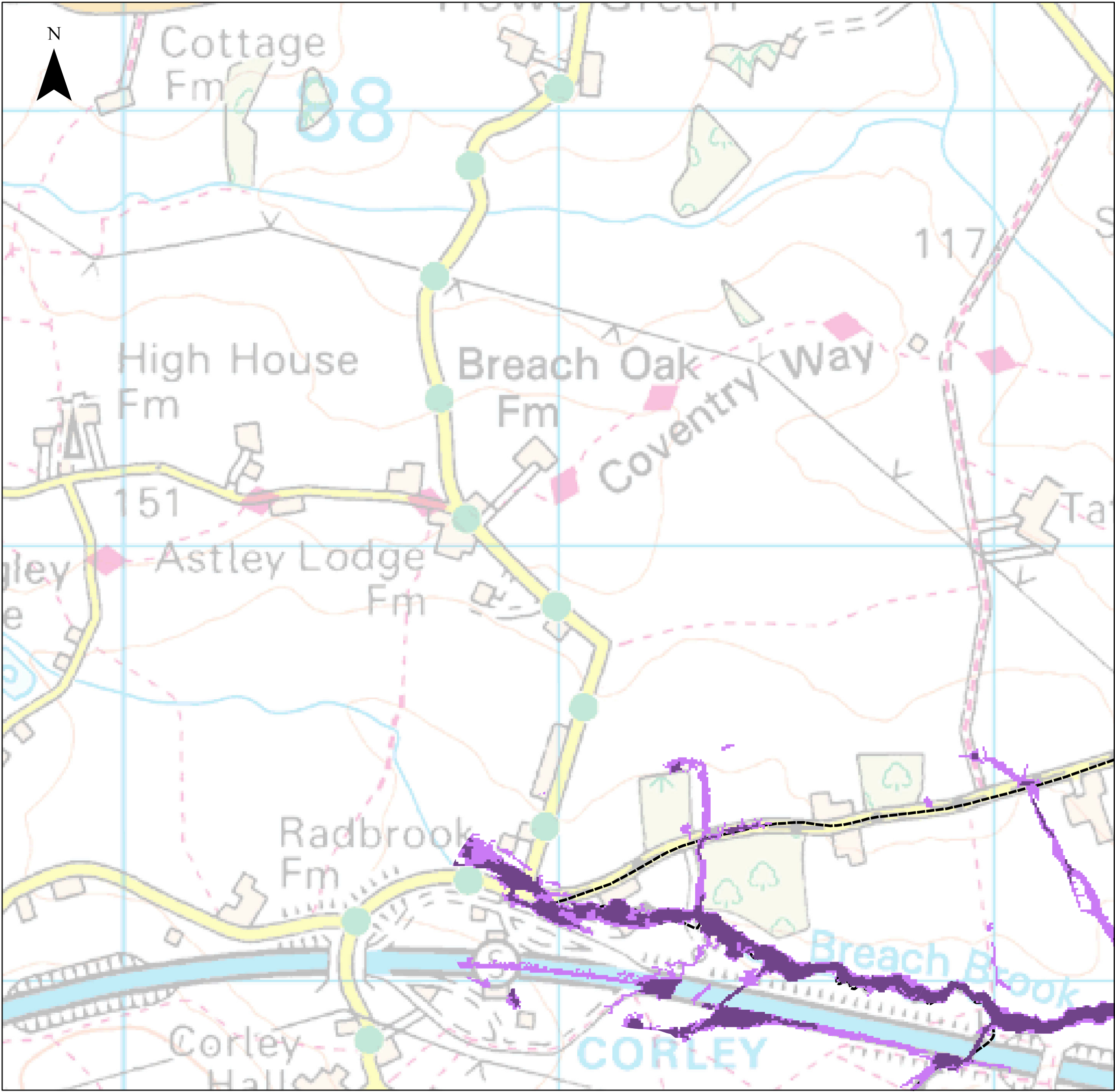
APPENDIX F

SURFACE WATER MAPS - 200 YEARS

Sheet No: 20 of 34 Index No: NBBC_IND20

This document is the property of Jeremy Benn Associates Ltd. It shall not be reproduced in whole or in part, nor disclosed to a third party, without the permission of Jeremy Benn Associates Ltd.





NOTES

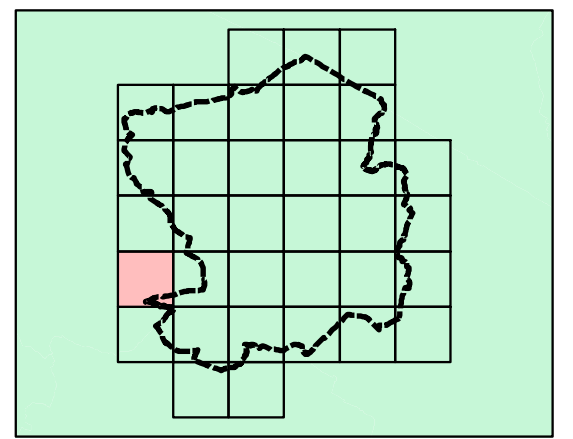
The Warwickshire PFRA (2011) describes the Flood Maps for Surface Water (FMfSW) as the locally agreed maps for surface water flooding.

The FMfSW shows the flooding that takes place from the 'surface runoff' generated by rainwater (including snow and other precipitation) which:
 (a) is on the surface of the ground (whether or not it is moving), and
 (b) has not yet entered a watercourse, drainage system or public sewer.

The Flood Map for Surface Water will pick out natural drainage channels, rivers, low areas in floodplains, and flow paths between buildings. But it will only indicate flooding caused by local rainfall.

NOTE: The Flood Map for Surface Water shows predictions of flooded areas but does not show whether individual properties will be affected by surface water flooding or have been affected in the past. The Flood Map for Surface Water should not be used to predict if individual properties will flood.

Key Plan



Legend

Surface Water Flood Map - 200 year

- > 0.3m
- > 0.1m
- Watercourses
- Nuneaton and Bedworth Borough

Reproduced from Ordnance Survey mapping with the permission of Ordnance Survey on behalf of the Controller of Her Majesty's Stationery Office. © Crown copyright. Unauthorised reproduction infringes Crown copyright and may lead to prosecution or civil proceedings. Nuneaton and Bedworth Borough Council Licence: 100018416 (2012)



REF	DATE	COMMENTS
A	Sept 2012	Draft
B	Nov 2012	Final
C		

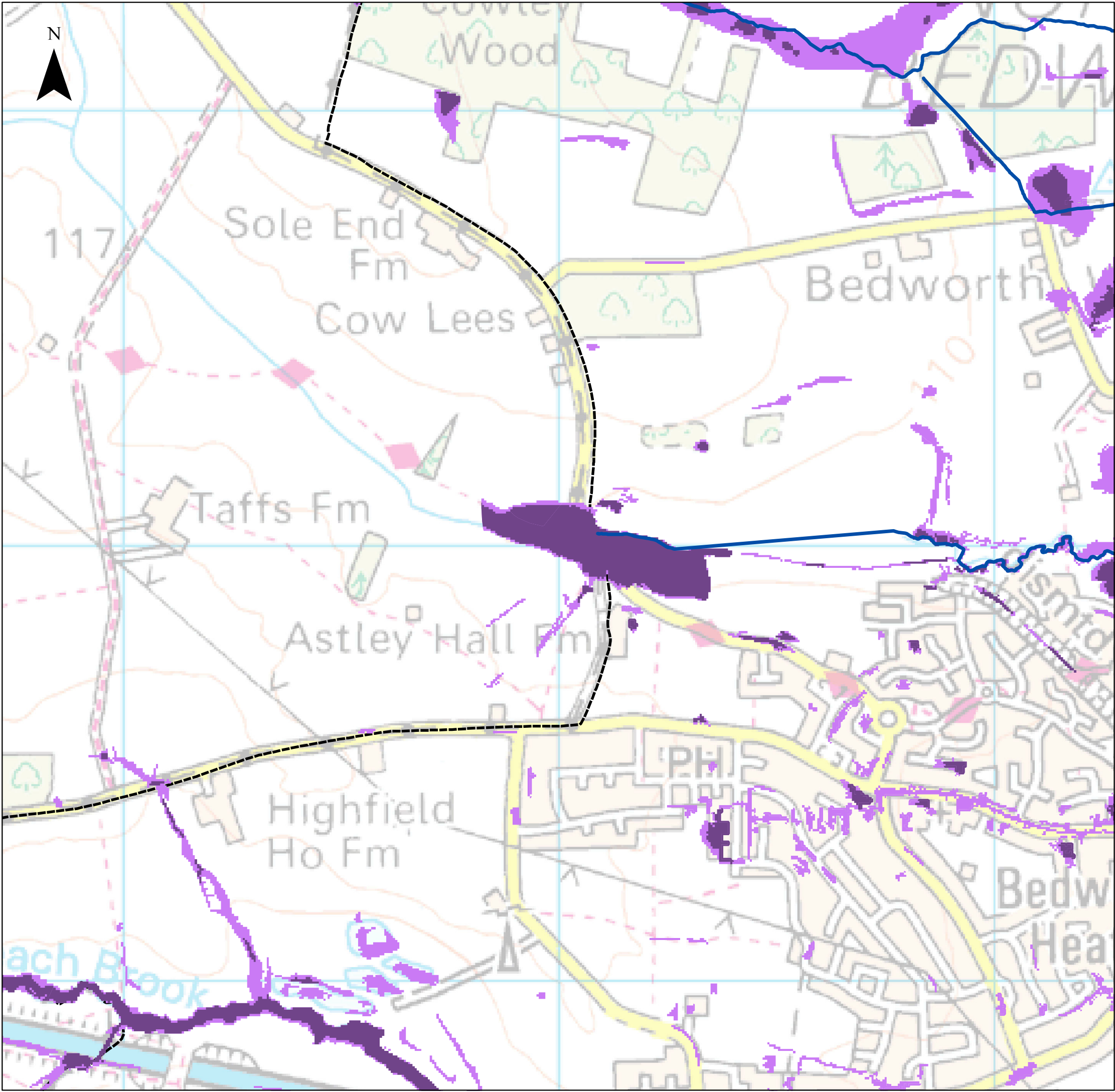
APPENDIX F

SURFACE WATER MAPS - 200 YEARS

Sheet No: 21 of 34 Index No: NBBC_IND21

This document is the property of Jeremy Benn Associates Ltd. It shall not be reproduced in whole or in part, nor disclosed to a third party, without the permission of Jeremy Benn Associates Ltd.





NOTES

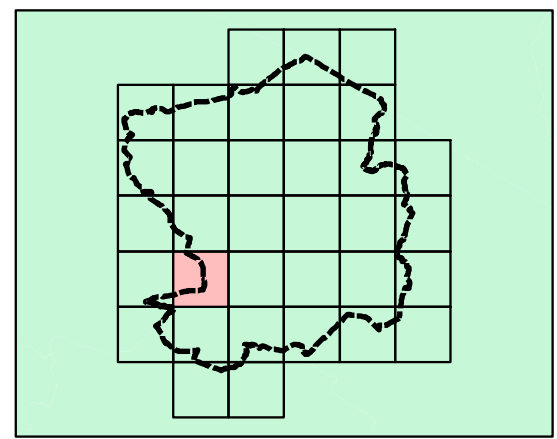
The Warwickshire PFRA (2011) describes the Flood Maps for Surface Water (FMfSW) as the locally agreed maps for surface water flooding.

The FMfSW shows the flooding that takes place from the 'surface runoff' generated by rainwater (including snow and other precipitation) which:
 (a) is on the surface of the ground (whether or not it is moving), and
 (b) has not yet entered a watercourse, drainage system or public sewer.

The Flood Map for Surface Water will pick out natural drainage channels, rivers, low areas in floodplains, and flow paths between buildings. But it will only indicate flooding caused by local rainfall.

NOTE: The Flood Map for Surface Water shows predictions of flooded areas but does not show whether individual properties will be affected by surface water flooding or have been affected in the past. The Flood Map for Surface Water should not be used to predict if individual properties will flood.

Key Plan



Legend

Surface Water Flood Map - 200 year

- > 0.3m
- > 0.1m
- Watercourses
- Nuneaton and Bedworth Borough

Reproduced from Ordnance Survey mapping with the permission of Ordnance Survey on behalf of the Controller of Her Majesty's Stationery Office. © Crown copyright. Unauthorised reproduction infringes Crown copyright and may lead to prosecution or civil proceedings. Nuneaton and Bedworth Borough Council Licence: 100018416 (2012)



REF	DATE	COMMENTS
A	Sept 2012	Draft
B	Nov 2012	Final
C		

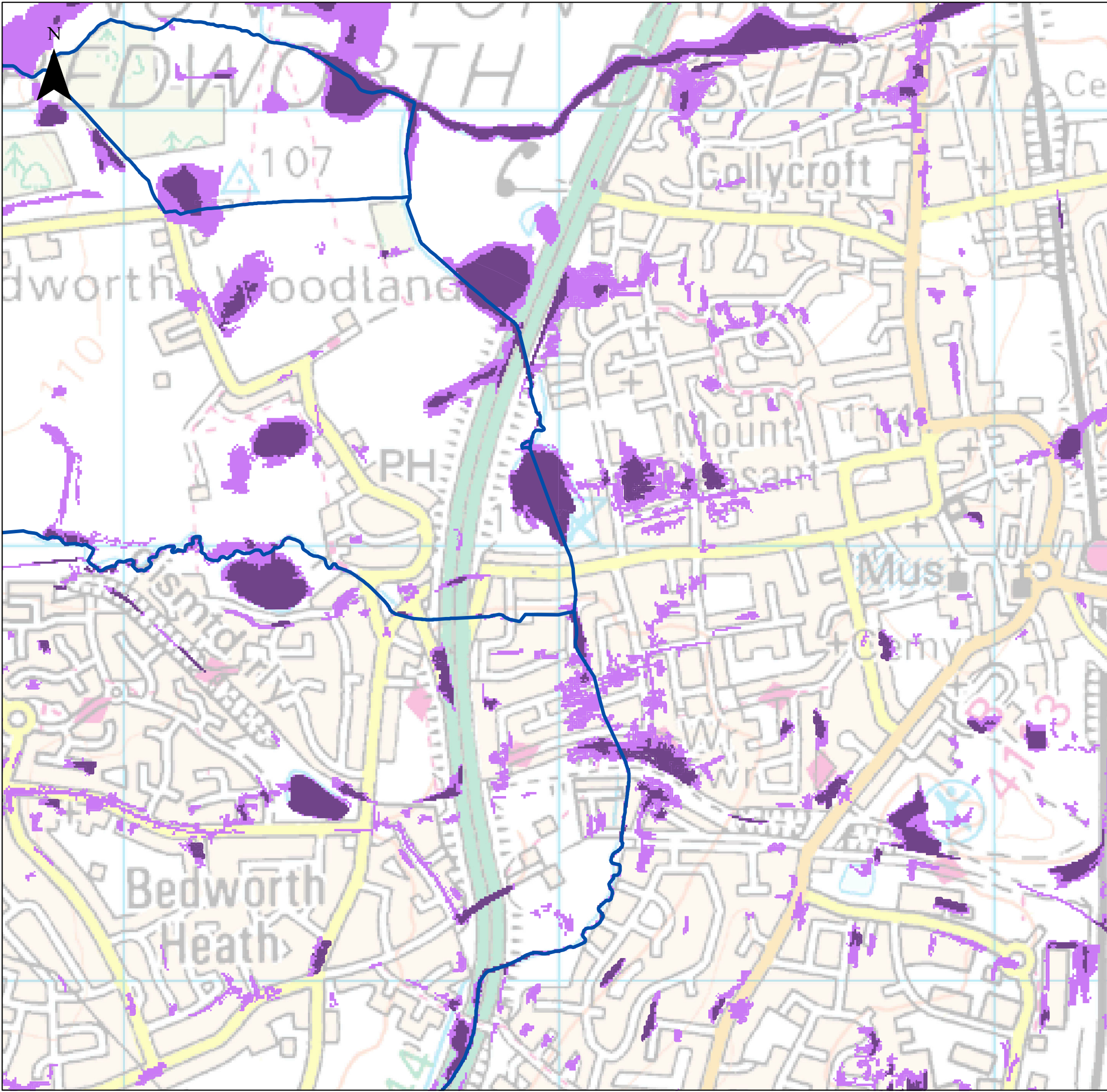
APPENDIX F

SURFACE WATER MAPS - 200 YEARS

Sheet No: 22 of 34 Index No: NBBC_IND22

This document is the property of Jeremy Benn Associates Ltd. It shall not be reproduced in whole or in part, nor disclosed to a third party, without the permission of Jeremy Benn Associates Ltd.





NOTES

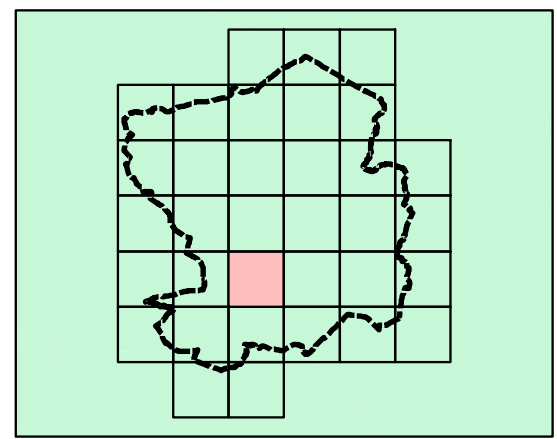
The Warwickshire PFRA (2011) describes the Flood Maps for Surface Water (FMfSW) as the locally agreed maps for surface water flooding.

The FMfSW shows the flooding that takes place from the 'surface runoff' generated by rainwater (including snow and other precipitation) which:
 (a) is on the surface of the ground (whether or not it is moving), and
 (b) has not yet entered a watercourse, drainage system or public sewer.

The Flood Map for Surface Water will pick out natural drainage channels, rivers, low areas in floodplains, and flow paths between buildings. But it will only indicate flooding caused by local rainfall.





NOTE: The Flood Map for Surface Water shows predictions of flooded areas but does not show whether individual properties will be affected by surface water flooding or have been affected in the past. The Flood Map for Surface Water should not be used to predict if individual properties will flood.

Key Plan



Legend

Surface Water Flood Map - 200 year

-  > 0.3m
-  > 0.1m
-  Watercourses
-  Nuneaton and Bedworth Borough

Reproduced from Ordnance Survey mapping with the permission of Ordnance Survey on behalf of the Controller of Her Majesty's Stationery Office. © Crown copyright. Unauthorised reproduction infringes Crown copyright and may lead to prosecution or civil proceedings. Nuneaton and Bedworth Borough Council Licence: 100018416 (2012)



REF	DATE	COMMENTS
A	Sept 2012	Draft
B	Nov 2012	Final
C		

APPENDIX F

SURFACE WATER MAPS - 200 YEARS

Sheet No: 23 of 34 Index No: NBBC_IND23

This document is the property of Jeremy Benn Associates Ltd. It shall not be reproduced in whole or in part, nor disclosed to a third party, without the permission of Jeremy Benn Associates Ltd.





JBA
consulting

Offices at

Atherstone

Doncaster

Edinburgh

Haywards Heath

Limerick

Newcastle upon Tyne

Newport

Saltaire

Skipton

Tadcaster

Thirsk

Wallingford

Warrington

Registered Office

South Barn

Broughton Hall

SKIPTON

North Yorkshire

BD23 3AE

t:+44(0)1756 799919

e:info@jbaconsulting.com

Jeremy Benn Associates Ltd
Registered in England 3246693



Visit our website
www.jbaconsulting.com