

## **Nuneaton and Bedworth Borough Council Strategic Flood Risk Assessment - Level 2**

### **Appendix F: Surface Water Mapping**

200 years – NBBC\_IND24 to NBBC\_IND34

November 2012

**Nuneaton and Bedworth Borough Council**  
Town Hall  
Coton Road  
NUNEATON  
Warwickshire  
CV11 5AA

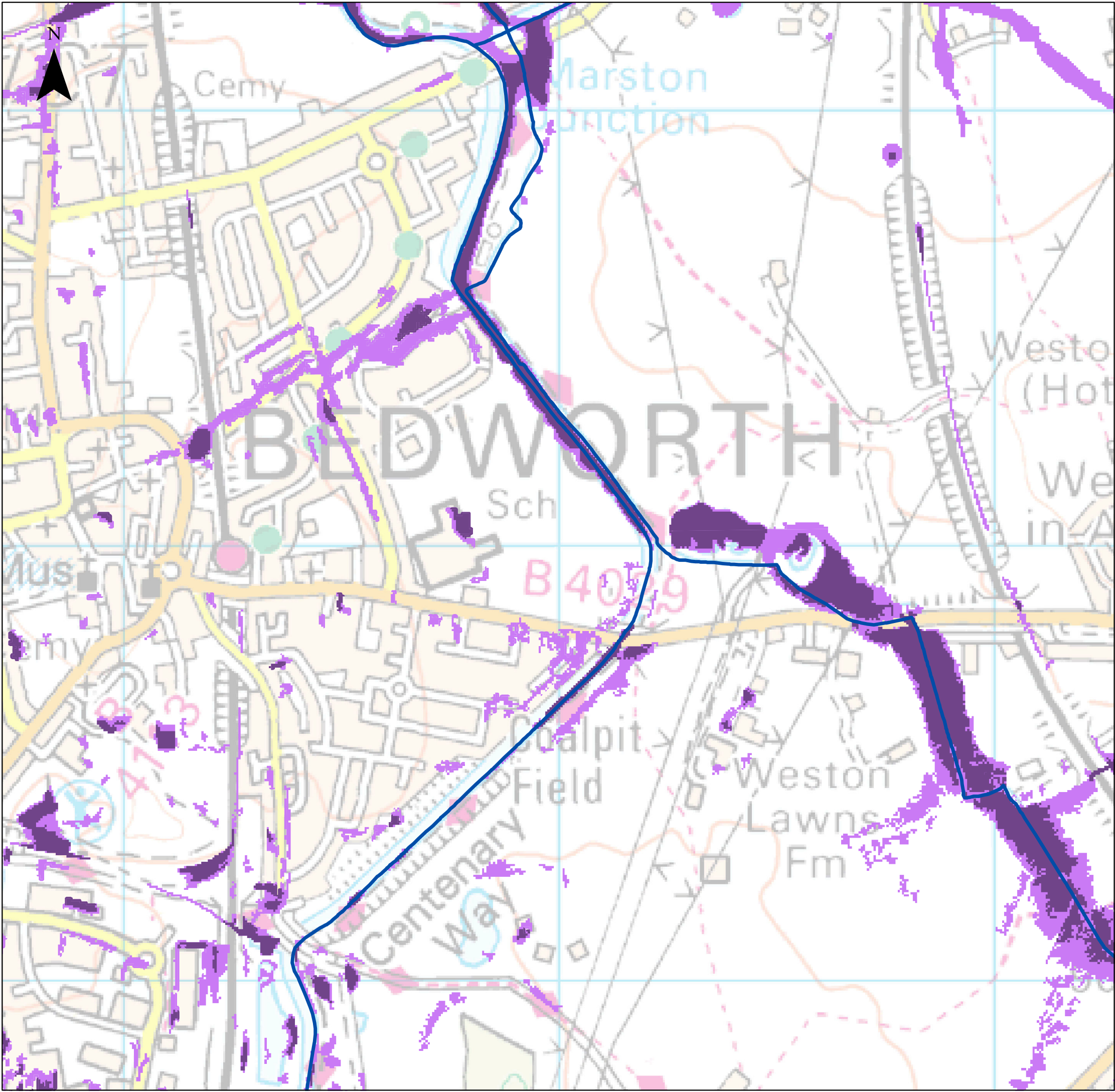




This page is intentionally left blank

## **F Surface Water Mapping: 200 Years**





**NOTES**

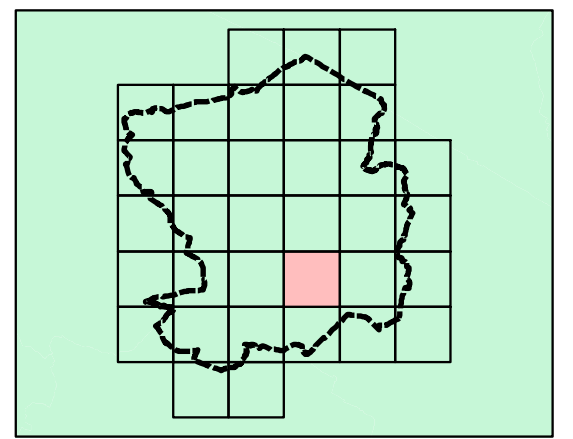
The Warwickshire PFRA (2011) describes the Flood Maps for Surface Water (FMfSW) as the locally agreed maps for surface water flooding.

The FMfSW shows the flooding that takes place from the 'surface runoff' generated by rainwater (including snow and other precipitation) which:  
 (a) is on the surface of the ground (whether or not it is moving), and  
 (b) has not yet entered a watercourse, drainage system or public sewer.

The Flood Map for Surface Water will pick out natural drainage channels, rivers, low areas in floodplains, and flow paths between buildings. But it will only indicate flooding caused by local rainfall.





NOTE: The Flood Map for Surface Water shows predictions of flooded areas but does not show whether individual properties will be affected by surface water flooding or have been affected in the past. The Flood Map for Surface Water should not be used to predict if individual properties will flood.

**Key Plan**



**Legend**

**Surface Water Flood Map - 200 year**

-  > 0.3m
-  > 0.1m
-  Watercourses
-  Nuneaton and Bedworth Borough

Reproduced from Ordnance Survey mapping with the permission of Ordnance Survey on behalf of the Controller of Her Majesty's Stationery Office. © Crown copyright. Unauthorised reproduction infringes Crown copyright and may lead to prosecution or civil proceedings. Nuneaton and Bedworth Borough Council Licence: 100018416 (2012)



REF	DATE	COMMENTS
A	Sept 2012	Draft
B	Nov 2012	Final
C		

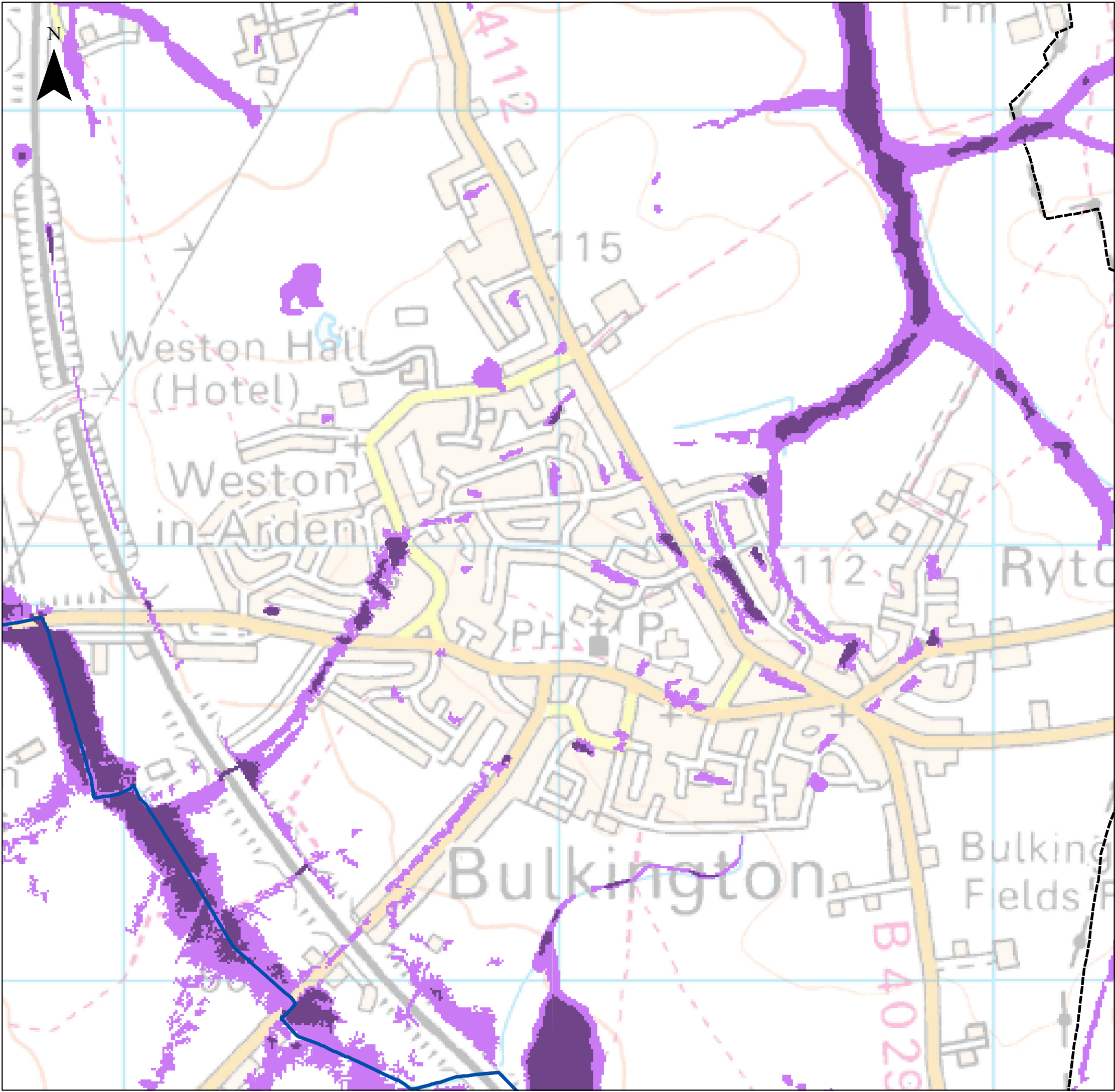
**APPENDIX F**

**SURFACE WATER MAPS - 200 YEARS**

Sheet No: 24 of 34 Index No: NBBC\_IND24

This document is the property of Jeremy Benn Associates Ltd. It shall not be reproduced in whole or in part, nor disclosed to a third party, without the permission of Jeremy Benn Associates Ltd.





**NOTES**

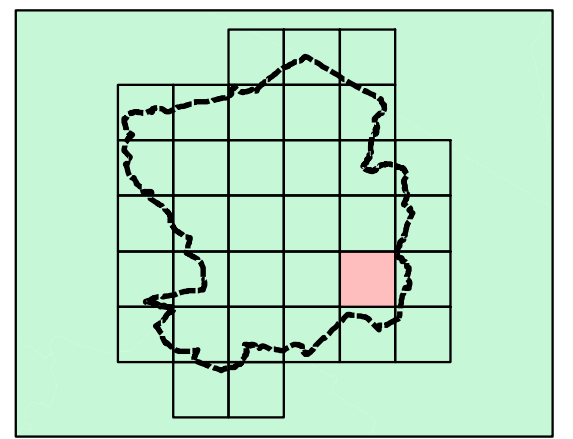
The Warwickshire PFRA (2011) describes the Flood Maps for Surface Water (FMfSW) as the locally agreed maps for surface water flooding.

The FMfSW shows the flooding that takes place from the 'surface runoff' generated by rainwater (including snow and other precipitation) which:  
 (a) is on the surface of the ground (whether or not it is moving), and  
 (b) has not yet entered a watercourse, drainage system or public sewer.

The Flood Map for Surface Water will pick out natural drainage channels, rivers, low areas in floodplains, and flow paths between buildings. But it will only indicate flooding caused by local rainfall.





NOTE: The Flood Map for Surface Water shows predictions of flooded areas but does not show whether individual properties will be affected by surface water flooding or have been affected in the past. The Flood Map for Surface Water should not be used to predict if individual properties will flood.

**Key Plan**



**Legend**

**Surface Water Flood Map - 200 year**

-  > 0.3m
-  > 0.1m
-  Watercourses
-  Nuneaton and Bedworth Borough

Reproduced from Ordnance Survey mapping with the permission of Ordnance Survey on behalf of the Controller of Her Majesty's Stationery Office. © Crown copyright. Unauthorised reproduction infringes Crown copyright and may lead to prosecution or civil proceedings. Nuneaton and Bedworth Borough Council Licence: 100018416 (2012)



REF	DATE	COMMENTS
A	Sept 2012	Draft
B	Nov 2012	Final
C		

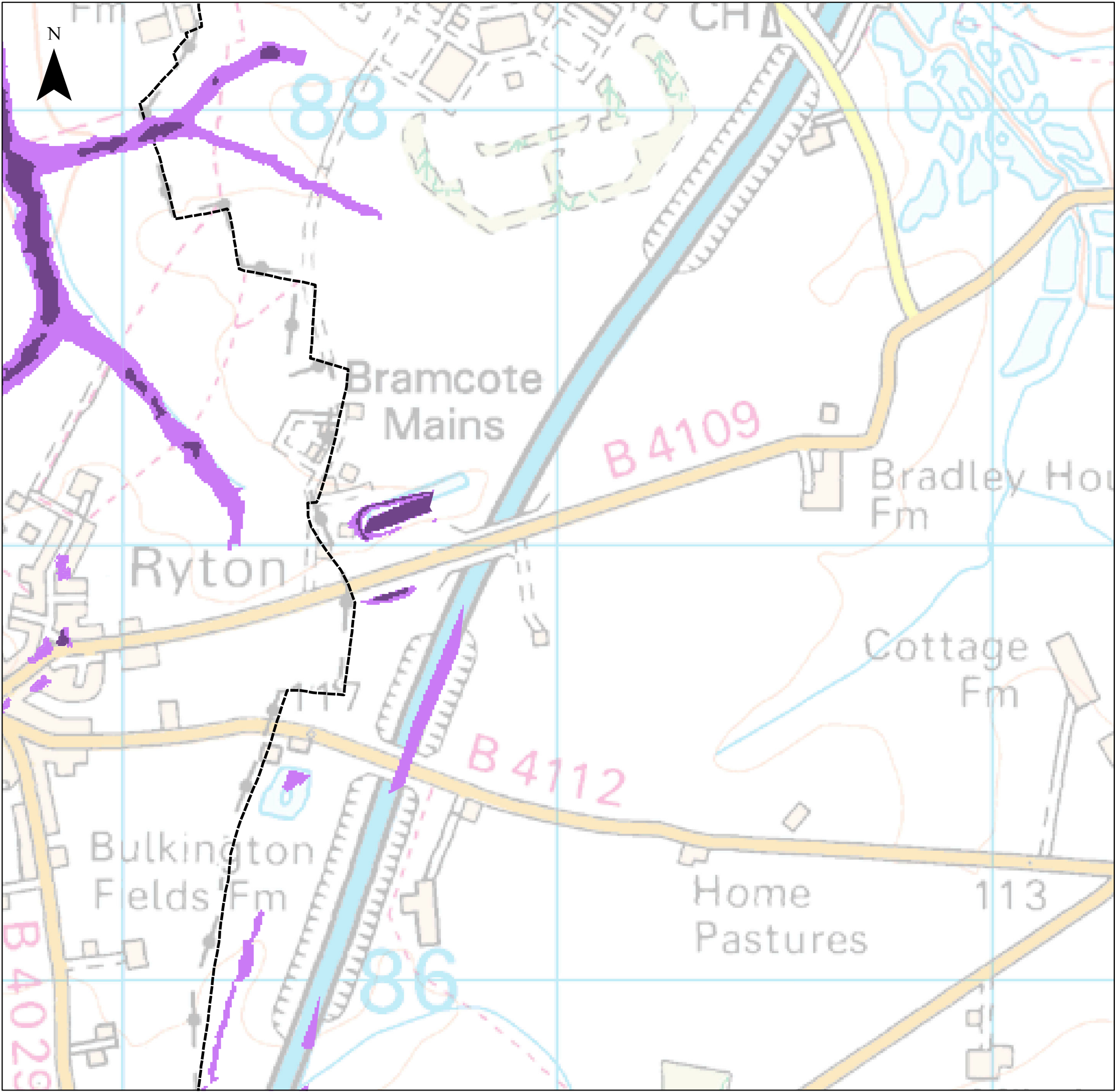
**APPENDIX F**

**SURFACE WATER MAPS - 200 YEARS**

Sheet No: 25 of 34 Index No: NBBC\_IND25

This document is the property of Jeremy Benn Associates Ltd. It shall not be reproduced in whole or in part, nor disclosed to a third party, without the permission of Jeremy Benn Associates Ltd.





**NOTES**

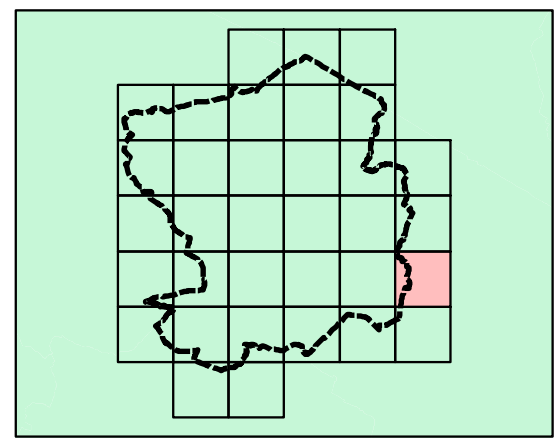
The Warwickshire PFRA (2011) describes the Flood Maps for Surface Water (FMfSW) as the locally agreed maps for surface water flooding.

The FMfSW shows the flooding that takes place from the 'surface runoff' generated by rainwater (including snow and other precipitation) which:  
 (a) is on the surface of the ground (whether or not it is moving), and  
 (b) has not yet entered a watercourse, drainage system or public sewer.

The Flood Map for Surface Water will pick out natural drainage channels, rivers, low areas in floodplains, and flow paths between buildings. But it will only indicate flooding caused by local rainfall.





NOTE: The Flood Map for Surface Water shows predictions of flooded areas but does not show whether individual properties will be affected by surface water flooding or have been affected in the past. The Flood Map for Surface Water should not be used to predict if individual properties will flood.

**Key Plan**



**Legend**

**Surface Water Flood Map - 200 year**

-  > 0.3m
-  > 0.1m
-  Watercourses
-  Nuneaton and Bedworth Borough

Reproduced from Ordnance Survey mapping with the permission of Ordnance Survey on behalf of the Controller of Her Majesty's Stationery Office. © Crown copyright. Unauthorised reproduction infringes Crown copyright and may lead to prosecution or civil proceedings. Nuneaton and Bedworth Borough Council Licence: 100018416 (2012)



REF	DATE	COMMENTS
A	Sept 2012	Draft
B	Nov 2012	Final
C		

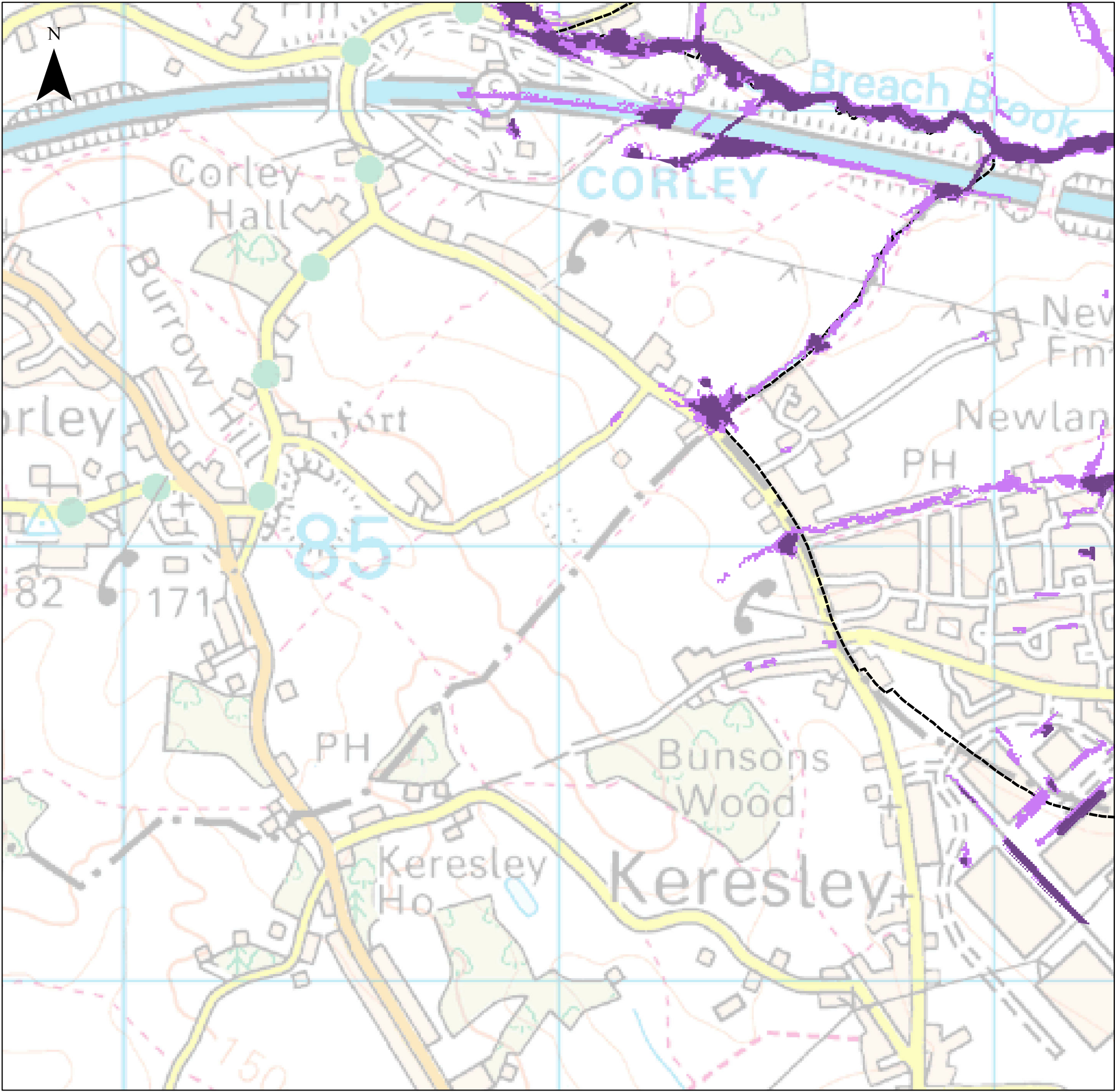
**APPENDIX F**

**SURFACE WATER MAPS - 200 YEARS**

Sheet No: 26 of 34 Index No: NBBC\_IND26

This document is the property of Jeremy Benn Associates Ltd. It shall not be reproduced in whole or in part, nor disclosed to a third party, without the permission of Jeremy Benn Associates Ltd.





**NOTES**

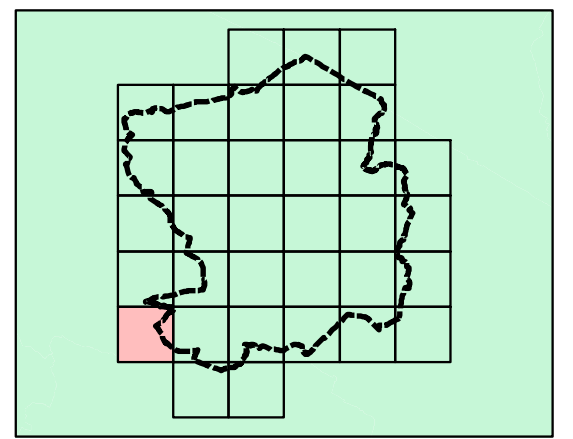
The Warwickshire PFRA (2011) describes the Flood Maps for Surface Water (FMfSW) as the locally agreed maps for surface water flooding.

The FMfSW shows the flooding that takes place from the 'surface runoff' generated by rainwater (including snow and other precipitation) which:  
 (a) is on the surface of the ground (whether or not it is moving), and  
 (b) has not yet entered a watercourse, drainage system or public sewer.

The Flood Map for Surface Water will pick out natural drainage channels, rivers, low areas in floodplains, and flow paths between buildings. But it will only indicate flooding caused by local rainfall.

NOTE: The Flood Map for Surface Water shows predictions of flooded areas but does not show whether individual properties will be affected by surface water flooding or have been affected in the past. The Flood Map for Surface Water should not be used to predict if individual properties will flood.

**Key Plan**



**Legend**

**Surface Water Flood Map - 200 year**

- > 0.3m
- > 0.1m
- Watercourses
- Nuneaton and Bedworth Borough

Reproduced from Ordnance Survey mapping with the permission of Ordnance Survey on behalf of the Controller of Her Majesty's Stationery Office. © Crown copyright. Unauthorised reproduction infringes Crown copyright and may lead to prosecution or civil proceedings. Nuneaton and Bedworth Borough Council Licence: 100018416 (2012)



REF	DATE	COMMENTS
A	Sept 2012	Draft
B	Nov 2012	Final
C		

**APPENDIX F**

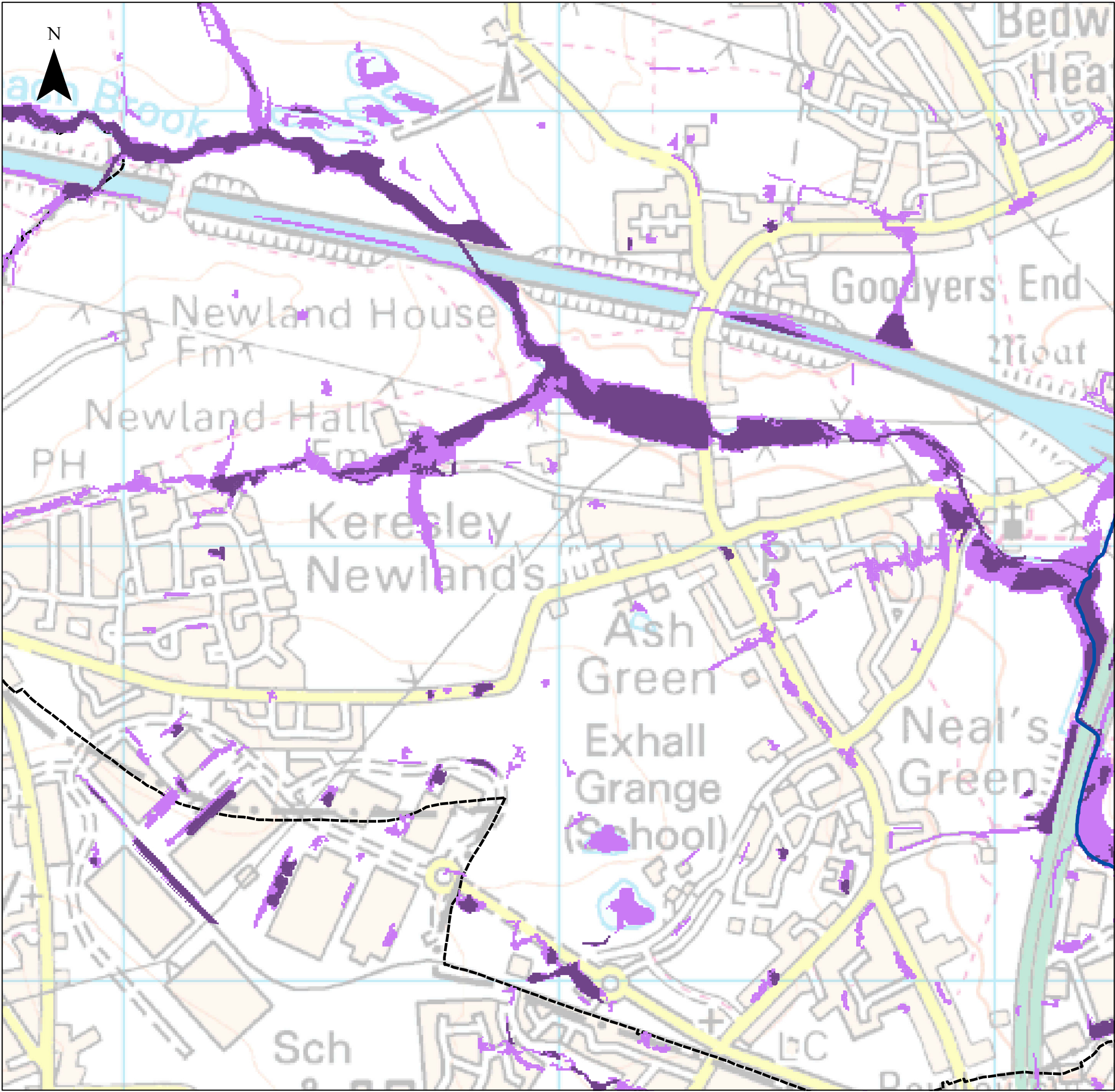
**SURFACE WATER MAPS - 200 YEARS**

Sheet No: 27 of 34 Index No: NBBC\_IND27

This document is the property of Jeremy Benn Associates Ltd. It shall not be reproduced in whole or in part, nor disclosed to a third party, without the permission of Jeremy Benn Associates Ltd.







N



**NOTES**

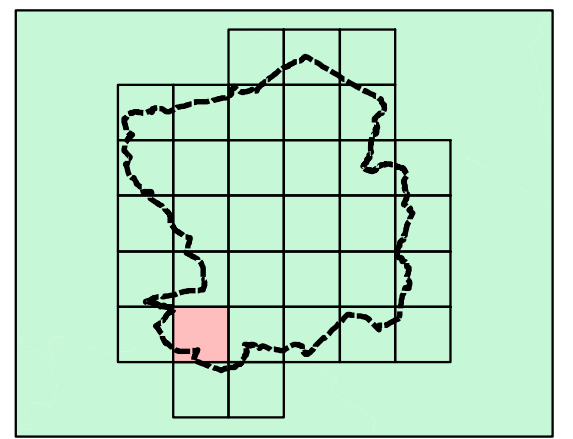
The Warwickshire PFRA (2011) describes the Flood Maps for Surface Water (FMfSW) as the locally agreed maps for surface water flooding.

The FMfSW shows the flooding that takes place from the 'surface runoff' generated by rainwater (including snow and other precipitation) which:  
 (a) is on the surface of the ground (whether or not it is moving), and  
 (b) has not yet entered a watercourse, drainage system or public sewer.

The Flood Map for Surface Water will pick out natural drainage channels, rivers, low areas in floodplains, and flow paths between buildings. But it will only indicate flooding caused by local rainfall.

NOTE: The Flood Map for Surface Water shows predictions of flooded areas but does not show whether individual properties will be affected by surface water flooding or have been affected in the past. The Flood Map for Surface Water should not be used to predict if individual properties will flood.

**Key Plan**



**Legend**

**Surface Water Flood Map - 200 year**

- > 0.3m
- > 0.1m
- Watercourses
- Nuneaton and Bedworth Borough

Reproduced from Ordnance Survey mapping with the permission of Ordnance Survey on behalf of the Controller of Her Majesty's Stationery Office. © Crown copyright. Unauthorised reproduction infringes Crown copyright and may lead to prosecution or civil proceedings. Nuneaton and Bedworth Borough Council Licence: 100018416 (2012)



REF	DATE	COMMENTS
A	Sept 2012	Draft
B	Nov 2012	Final
C		

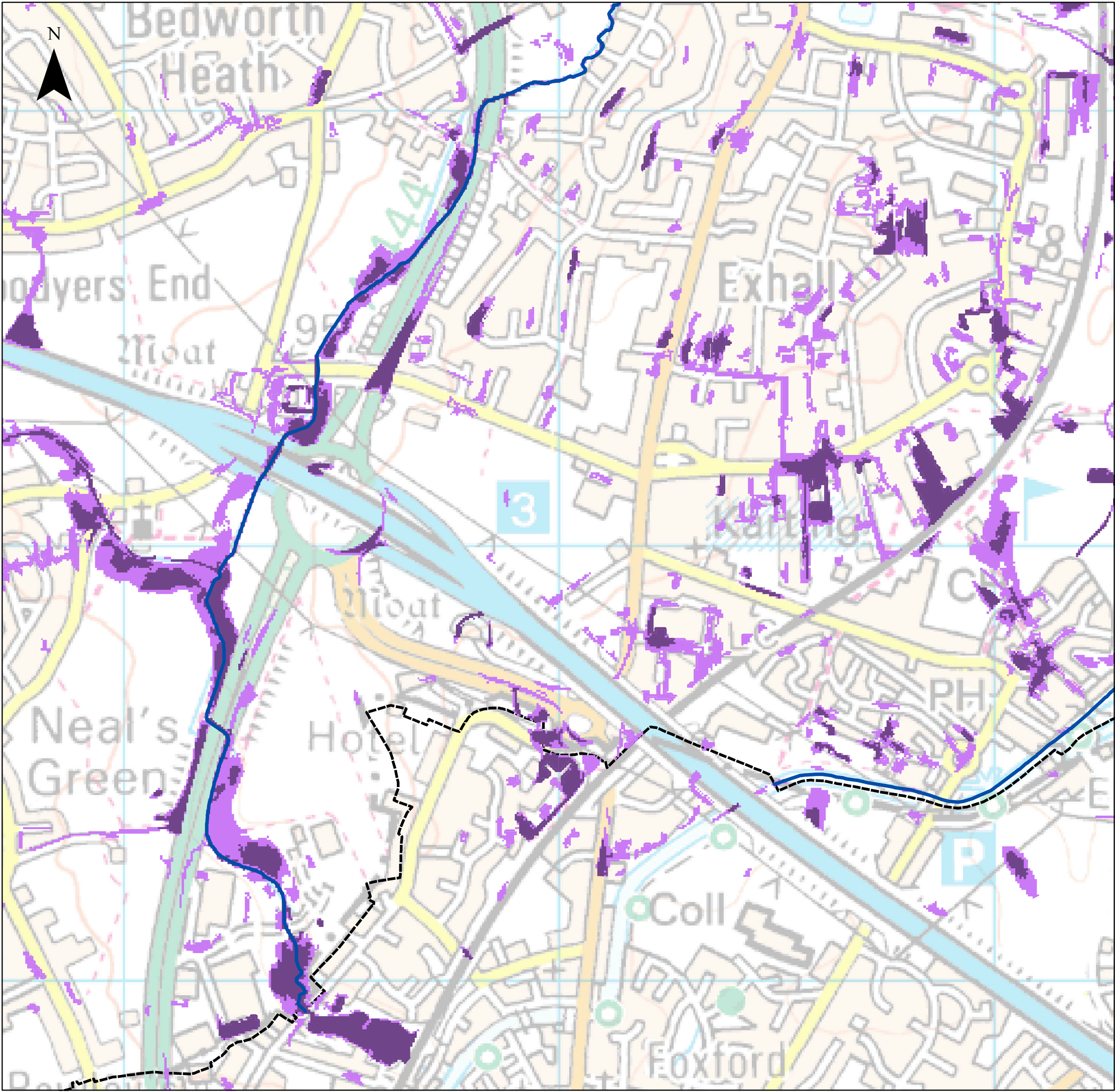
**APPENDIX F**

**SURFACE WATER MAPS - 200 YEARS**

Sheet No: 28 of 34 Index No: NBBC\_IND28

This document is the property of Jeremy Benn Associates Ltd. It shall not be reproduced in whole or in part, nor disclosed to a third party, without the permission of Jeremy Benn Associates Ltd.





**NOTES**

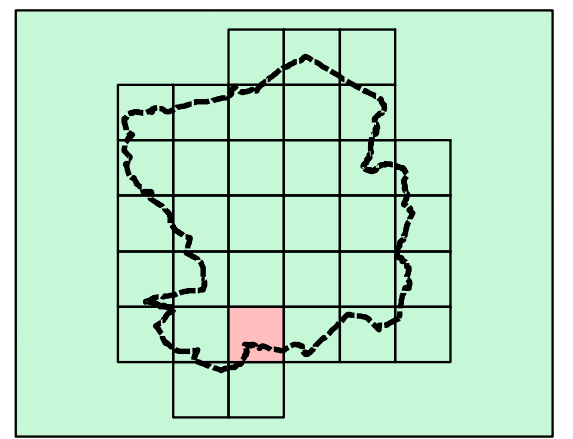
The Warwickshire PFRA (2011) describes the Flood Maps for Surface Water (FMfSW) as the locally agreed maps for surface water flooding.

The FMfSW shows the flooding that takes place from the 'surface runoff' generated by rainwater (including snow and other precipitation) which:  
 (a) is on the surface of the ground (whether or not it is moving), and  
 (b) has not yet entered a watercourse, drainage system or public sewer.

The Flood Map for Surface Water will pick out natural drainage channels, rivers, low areas in floodplains, and flow paths between buildings. But it will only indicate flooding caused by local rainfall.

NOTE: The Flood Map for Surface Water shows predictions of flooded areas but does not show whether individual properties will be affected by surface water flooding or have been affected in the past. The Flood Map for Surface Water should not be used to predict if individual properties will flood.

**Key Plan**



**Legend**

**Surface Water Flood Map - 200 year**

- > 0.3m
- > 0.1m
- Watercourses
- Nuneaton and Bedworth Borough

Reproduced from Ordnance Survey mapping with the permission of Ordnance Survey on behalf of the Controller of Her Majesty's Stationery Office. © Crown copyright. Unauthorised reproduction infringes Crown copyright and may lead to prosecution or civil proceedings. Nuneaton and Bedworth Borough Council Licence: 100018416 (2012)



REF	DATE	COMMENTS
A	Sept 2012	Draft
B	Nov 2012	Final
C		

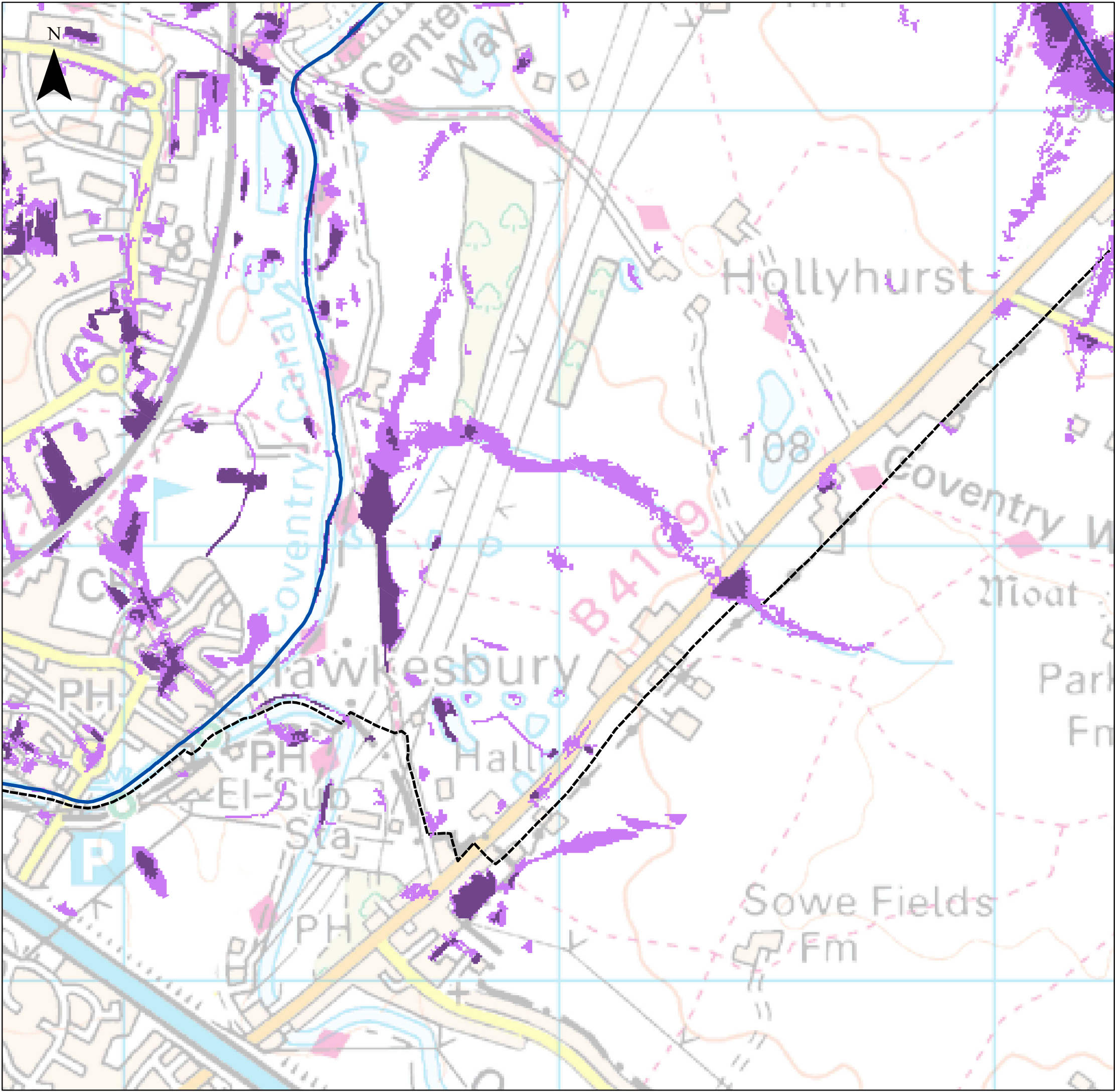
**APPENDIX F**

**SURFACE WATER MAPS - 200 YEARS**

Sheet No: 29 of 34 Index No: NBBC\_IND29

This document is the property of Jeremy Benn Associates Ltd. It shall not be reproduced in whole or in part, nor disclosed to a third party, without the permission of Jeremy Benn Associates Ltd.





**NOTES**

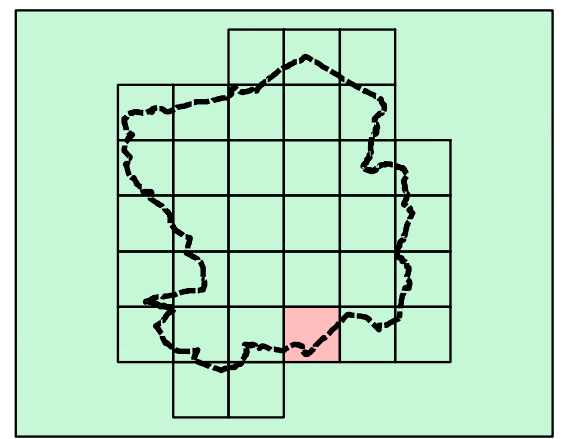
The Warwickshire PFRA (2011) describes the Flood Maps for Surface Water (FMfSW) as the locally agreed maps for surface water flooding.

The FMfSW shows the flooding that takes place from the 'surface runoff' generated by rainwater (including snow and other precipitation) which:  
 (a) is on the surface of the ground (whether or not it is moving), and  
 (b) has not yet entered a watercourse, drainage system or public sewer.

The Flood Map for Surface Water will pick out natural drainage channels, rivers, low areas in floodplains, and flow paths between buildings. But it will only indicate flooding caused by local rainfall.





NOTE: The Flood Map for Surface Water shows predictions of flooded areas but does not show whether individual properties will be affected by surface water flooding or have been affected in the past. The Flood Map for Surface Water should not be used to predict if individual properties will flood.

**Key Plan**



**Legend**

**Surface Water Flood Map - 200 year**

-  > 0.3m
-  > 0.1m
-  Watercourses
-  Nuneaton and Bedworth Borough

Reproduced from Ordnance Survey mapping with the permission of Ordnance Survey on behalf of the Controller of Her Majesty's Stationery Office. © Crown copyright. Unauthorised reproduction infringes Crown copyright and may lead to prosecution or civil proceedings. Nuneaton and Bedworth Borough Council Licence: 100018416 (2012)



REF	DATE	COMMENTS
A	Sept 2012	Draft
B	Nov 2012	Final
C		

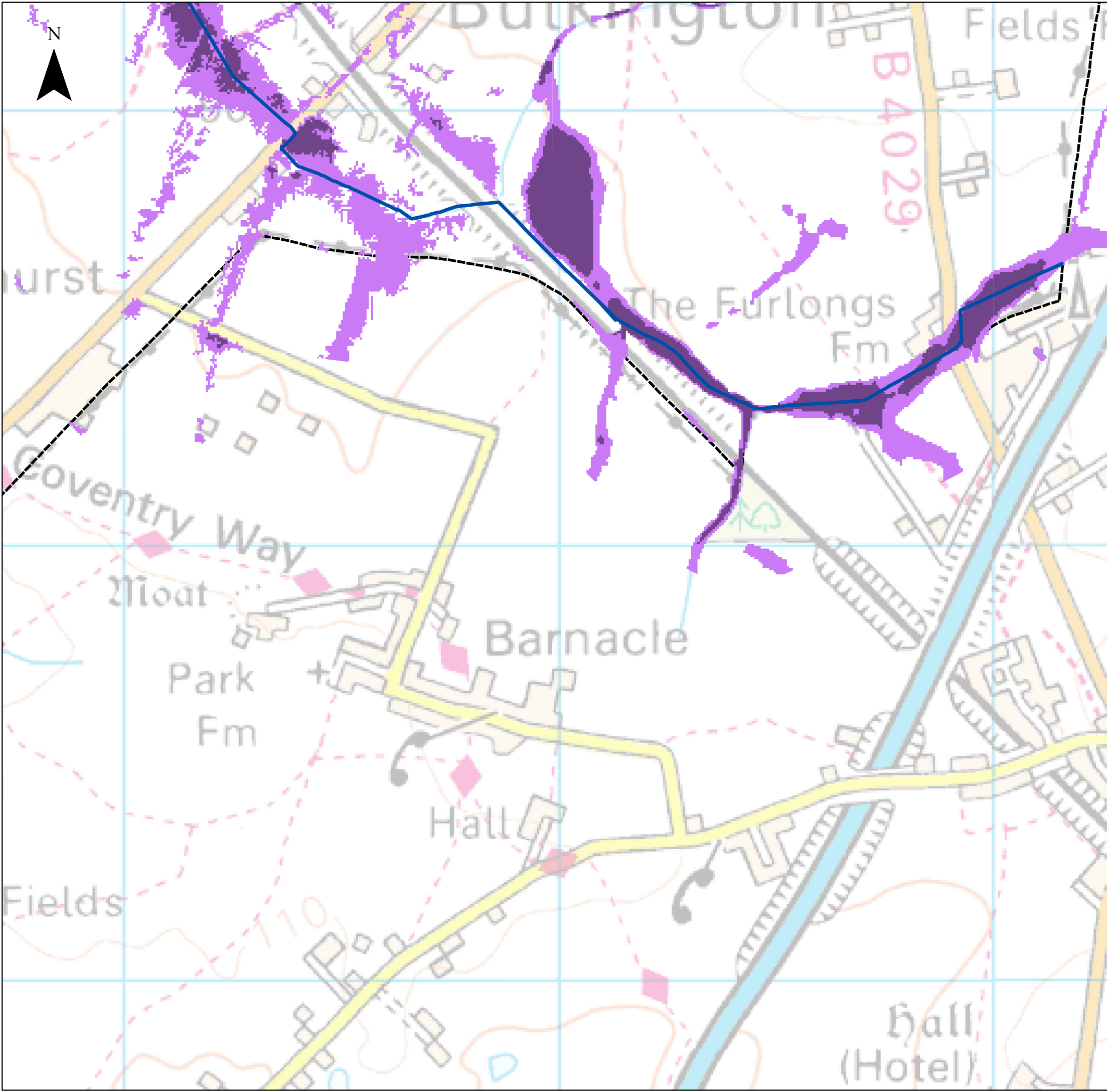
**APPENDIX F**

**SURFACE WATER MAPS - 200 YEARS**

Sheet No: 30 of 34 Index No: NBBC\_IND30

This document is the property of Jeremy Benn Associates Ltd. It shall not be reproduced in whole or in part, nor disclosed to a third party, without the permission of Jeremy Benn Associates Ltd.





**NOTES**

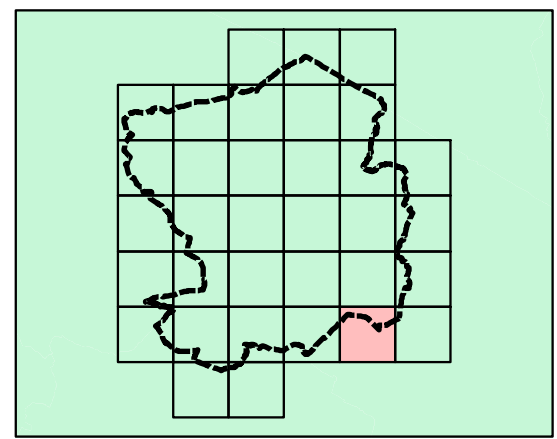
The Warwickshire PFRA (2011) describes the Flood Maps for Surface Water (FMfSW) as the locally agreed maps for surface water flooding.

The FMfSW shows the flooding that takes place from the 'surface runoff' generated by rainwater (including snow and other precipitation) which:  
 (a) is on the surface of the ground (whether or not it is moving), and  
 (b) has not yet entered a watercourse, drainage system or public sewer.

The Flood Map for Surface Water will pick out natural drainage channels, rivers, low areas in floodplains, and flow paths between buildings. But it will only indicate flooding caused by local rainfall.





NOTE: The Flood Map for Surface Water shows predictions of flooded areas but does not show whether individual properties will be affected by surface water flooding or have been affected in the past. The Flood Map for Surface Water should not be used to predict if individual properties will flood.

**Key Plan**



**Legend**

**Surface Water Flood Map - 200 year**

-  > 0.3m
-  > 0.1m
-  Watercourses
-  Nuneaton and Bedworth Borough

Reproduced from Ordnance Survey mapping with the permission of Ordnance Survey on behalf of the Controller of Her Majesty's Stationery Office. © Crown copyright. Unauthorised reproduction infringes Crown copyright and may lead to prosecution or civil proceedings. Nuneaton and Bedworth Borough Council Licence: 100018416 (2012)



REF	DATE	COMMENTS
A	Sept 2012	Draft
B	Nov 2012	Final
C		

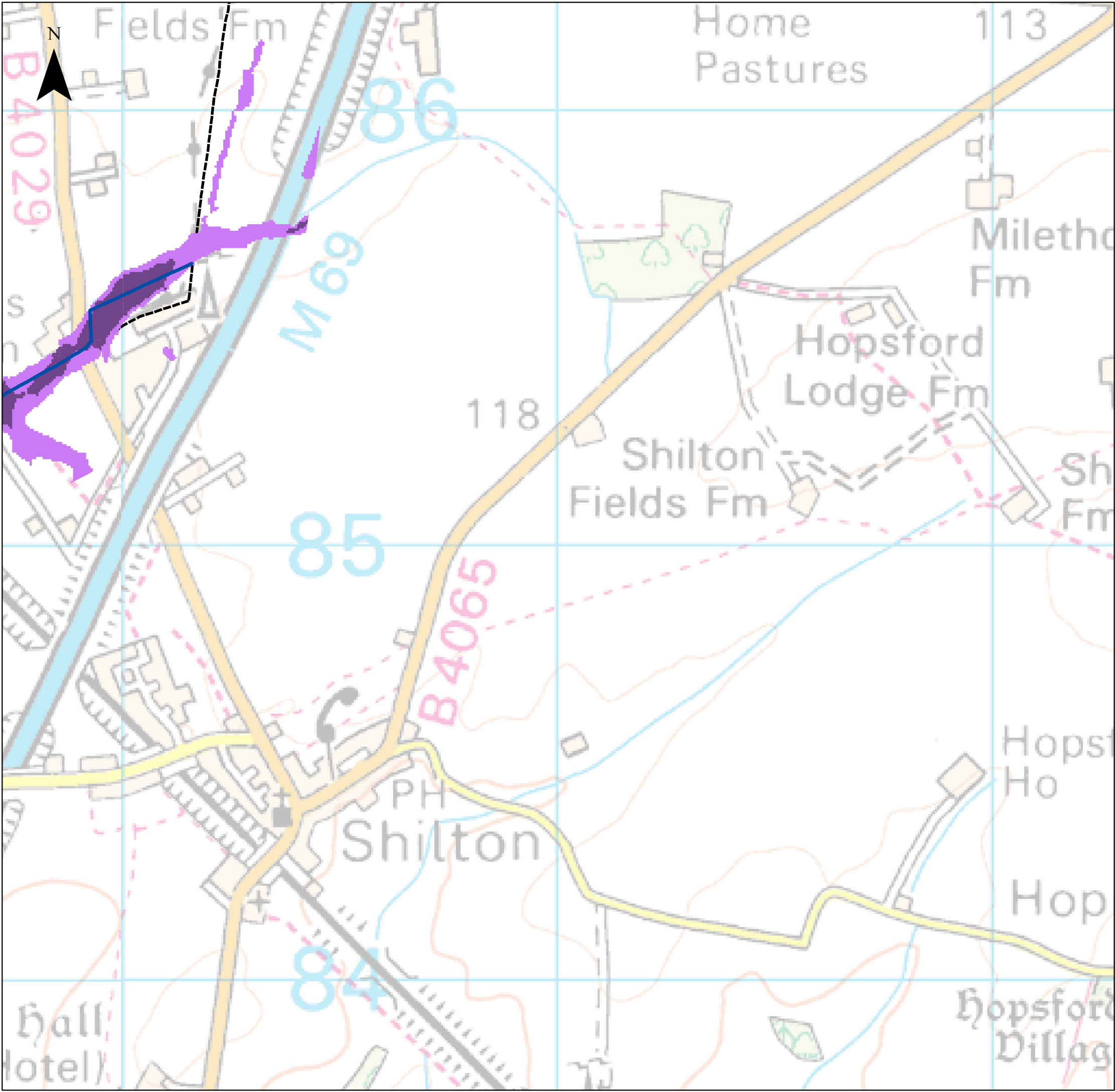
**APPENDIX F**

**SURFACE WATER MAPS - 200 YEARS**

Sheet No: 31 of 34 Index No: NBBC\_IND31

This document is the property of Jeremy Benn Associates Ltd. It shall not be reproduced in whole or in part, nor disclosed to a third party, without the permission of Jeremy Benn Associates Ltd.





**NOTES**

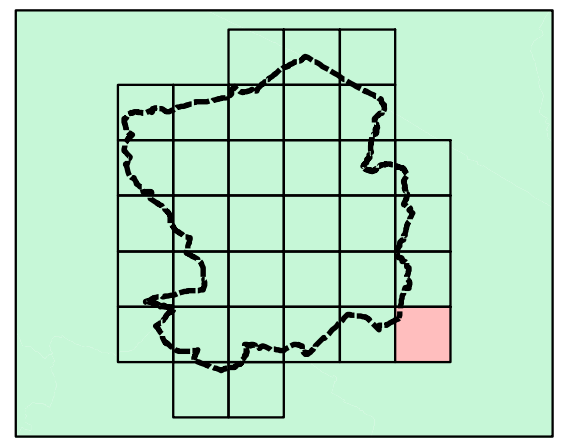
The Warwickshire PFRA (2011) describes the Flood Maps for Surface Water (FMfSW) as the locally agreed maps for surface water flooding.

The FMfSW shows the flooding that takes place from the 'surface runoff' generated by rainwater (including snow and other precipitation) which:  
 (a) is on the surface of the ground (whether or not it is moving), and  
 (b) has not yet entered a watercourse, drainage system or public sewer.

The Flood Map for Surface Water will pick out natural drainage channels, rivers, low areas in floodplains, and flow paths between buildings. But it will only indicate flooding caused by local rainfall.

NOTE: The Flood Map for Surface Water shows predictions of flooded areas but does not show whether individual properties will be affected by surface water flooding or have been affected in the past. The Flood Map for Surface Water should not be used to predict if individual properties will flood.

**Key Plan**



**Legend**

**Surface Water Flood Map - 200 year**

- > 0.3m
- > 0.1m
- Watercourses
- Nuneaton and Bedworth Borough

Reproduced from Ordnance Survey mapping with the permission of Ordnance Survey on behalf of the Controller of Her Majesty's Stationery Office. © Crown copyright. Unauthorised reproduction infringes Crown copyright and may lead to prosecution or civil proceedings. Nuneaton and Bedworth Borough Council Licence: 100018416 (2012)



REF	DATE	COMMENTS
A	Sept 2012	Draft
B	Nov 2012	Final
C		

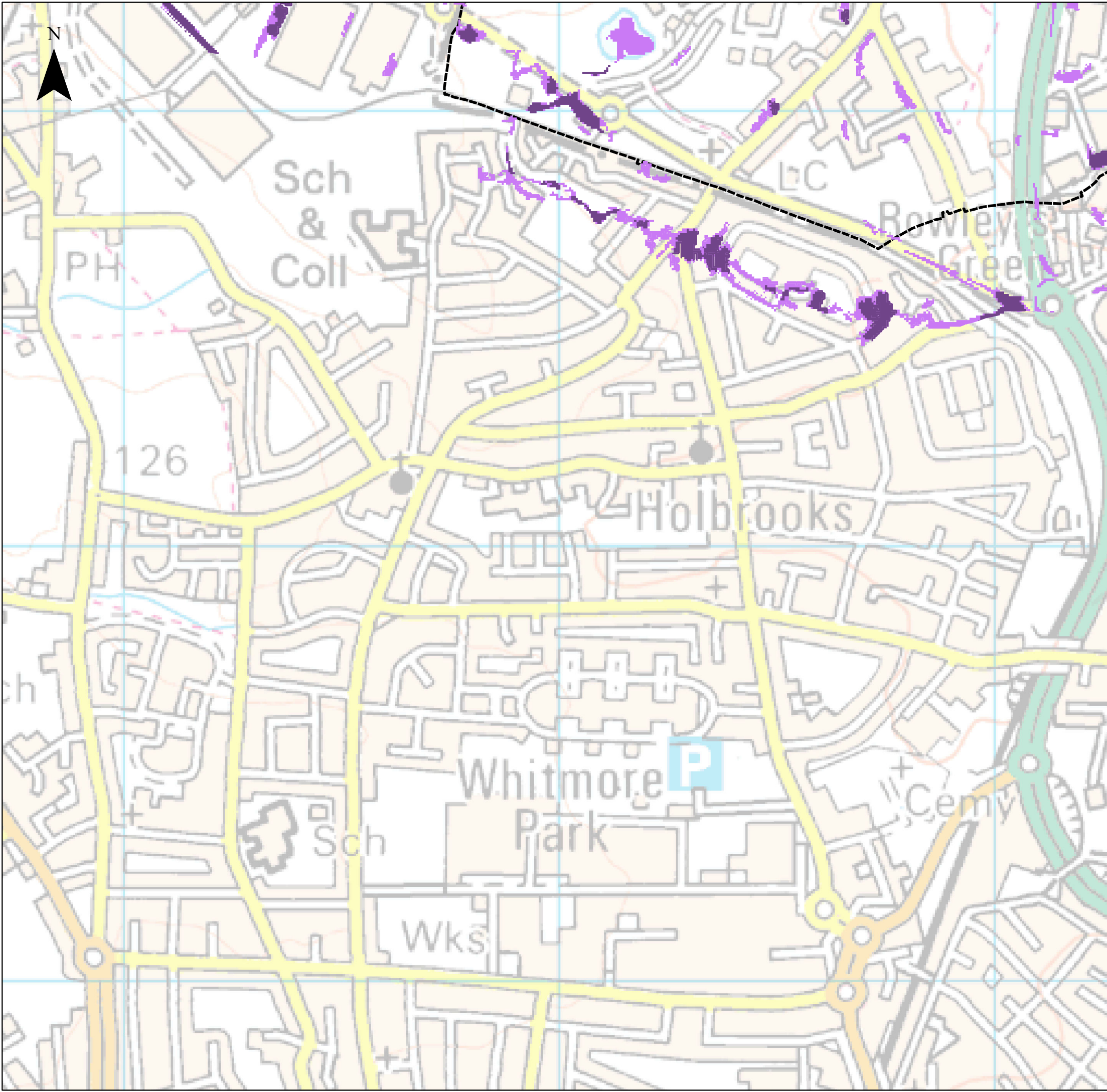
**APPENDIX F**

**SURFACE WATER MAPS - 200 YEARS**

Sheet No: 32 of 34 Index No: NBBC\_IND32

This document is the property of Jeremy Benn Associates Ltd. It shall not be reproduced in whole or in part, nor disclosed to a third party, without the permission of Jeremy Benn Associates Ltd.





**NOTES**

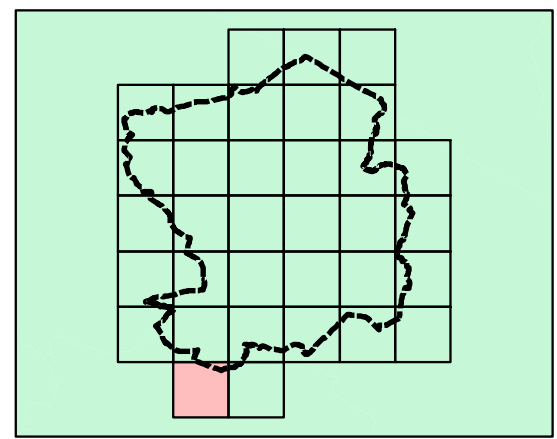
The Warwickshire PFRA (2011) describes the Flood Maps for Surface Water (FMfSW) as the locally agreed maps for surface water flooding.

The FMfSW shows the flooding that takes place from the 'surface runoff' generated by rainwater (including snow and other precipitation) which:  
 (a) is on the surface of the ground (whether or not it is moving), and  
 (b) has not yet entered a watercourse, drainage system or public sewer.

The Flood Map for Surface Water will pick out natural drainage channels, rivers, low areas in floodplains, and flow paths between buildings. But it will only indicate flooding caused by local rainfall.

NOTE: The Flood Map for Surface Water shows predictions of flooded areas but does not show whether individual properties will be affected by surface water flooding or have been affected in the past. The Flood Map for Surface Water should not be used to predict if individual properties will flood.

**Key Plan**



**Legend**

**Surface Water Flood Map - 200 year**

- > 0.3m
- > 0.1m
- Watercourses
- Nuneaton and Bedworth Borough

Reproduced from Ordnance Survey mapping with the permission of Ordnance Survey on behalf of the Controller of Her Majesty's Stationery Office. © Crown copyright. Unauthorised reproduction infringes Crown copyright and may lead to prosecution or civil proceedings. Nuneaton and Bedworth Borough Council Licence: 100018416 (2012)



REF	DATE	COMMENTS
A	Sept 2012	Draft
B	Nov 2012	Final
C		

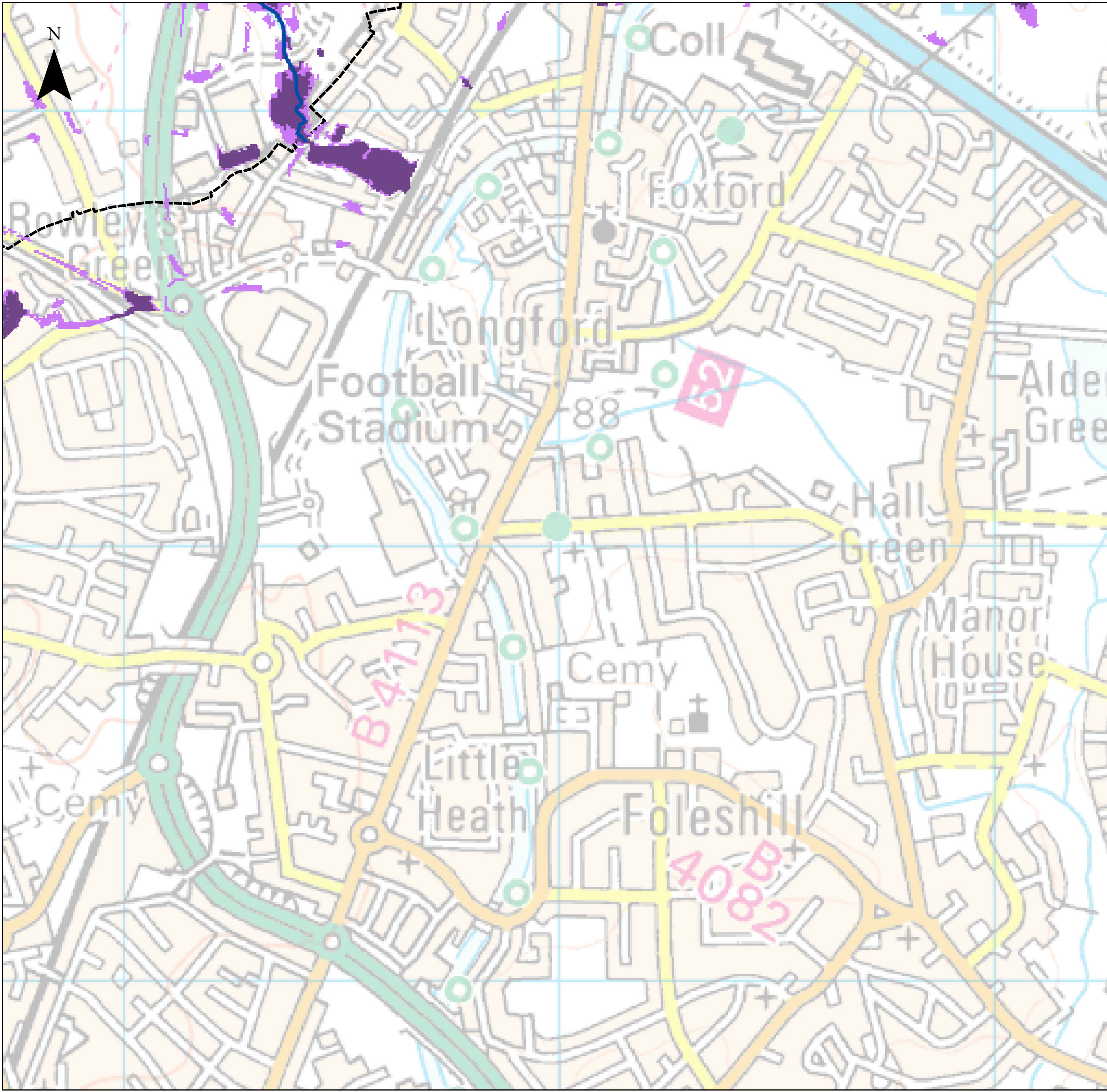
**APPENDIX F**

**SURFACE WATER MAPS - 200 YEARS**

Sheet No: 33 of 34 Index No: NBBC\_IND33

This document is the property of Jeremy Benn Associates Ltd. It shall not be reproduced in whole or in part, nor disclosed to a third party, without the permission of Jeremy Benn Associates Ltd.





**NOTES**

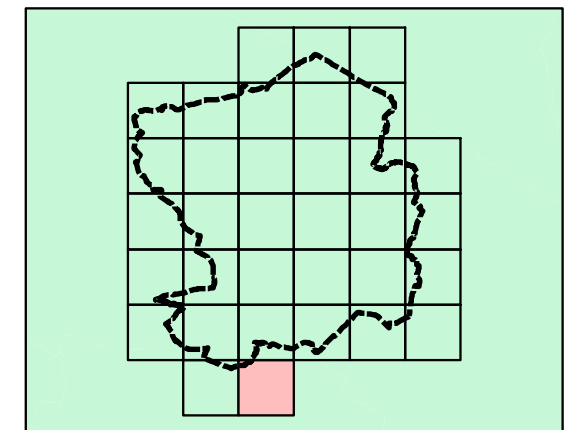
The Warwickshire PFRA (2011) describes the Flood Maps for Surface Water (FMfSW) as the locally agreed maps for surface water flooding.

The FMfSW shows the flooding that takes place from the 'surface runoff' generated by rainwater (including snow and other precipitation) which:  
 (a) is on the surface of the ground (whether or not it is moving), and  
 (b) has not yet entered a watercourse, drainage system or public sewer.

The Flood Map for Surface Water will pick out natural drainage channels, rivers, low areas in floodplains, and flow paths between buildings. But it will only indicate flooding caused by local rainfall.

NOTE: The Flood Map for Surface Water shows predictions of flooded areas but does not show whether individual properties will be affected by surface water flooding or have been affected in the past. The Flood Map for Surface Water should not be used to predict if individual properties will flood.

**Key Plan**



**Legend**

**Surface Water Flood Map - 200 year**

-  > 0.3m
-  > 0.1m
-  Watercourses
-  Nuneaton and Bedworth Borough

Reproduced from Ordnance Survey mapping with the permission of Ordnance Survey on behalf of the Controller of Her Majesty's Stationery Office. © Crown copyright. Unauthorised reproduction infringes Crown copyright and may lead to prosecution or civil proceedings. Nuneaton and Bedworth Borough Council Licence: 100018416 (2012)



REF	DATE	COMMENTS
A	Sept 2012	Draft
B	Nov 2012	Final
C		

**APPENDIX F**

**SURFACE WATER MAPS - 200 YEARS**

Sheet No: 34 of 34

Index No: NBBC\_IND34

This document is the property of Jeremy Benn Associates Ltd. It shall not be reproduced in whole or in part, nor disclosed to a third party, without the permission of Jeremy Benn Associates Ltd.





**JBA**  
consulting

Offices at

**Atherstone**

**Doncaster**

**Edinburgh**

**Haywards Heath**

**Limerick**

**Newcastle upon Tyne**

**Newport**

**Saltaire**

**Skipton**

**Tadcaster**

**Thirsk**

**Wallingford**

**Warrington**

Registered Office

**South Barn**

**Broughton Hall**

**SKIPTON**

**North Yorkshire**

**BD23 3AE**

t:+44(0)1756 799919

e:[info@jbaconsulting.com](mailto:info@jbaconsulting.com)

Jeremy Benn Associates Ltd  
**Registered in England 3246693**



Visit our website  
[www.jbaconsulting.com](http://www.jbaconsulting.com)