



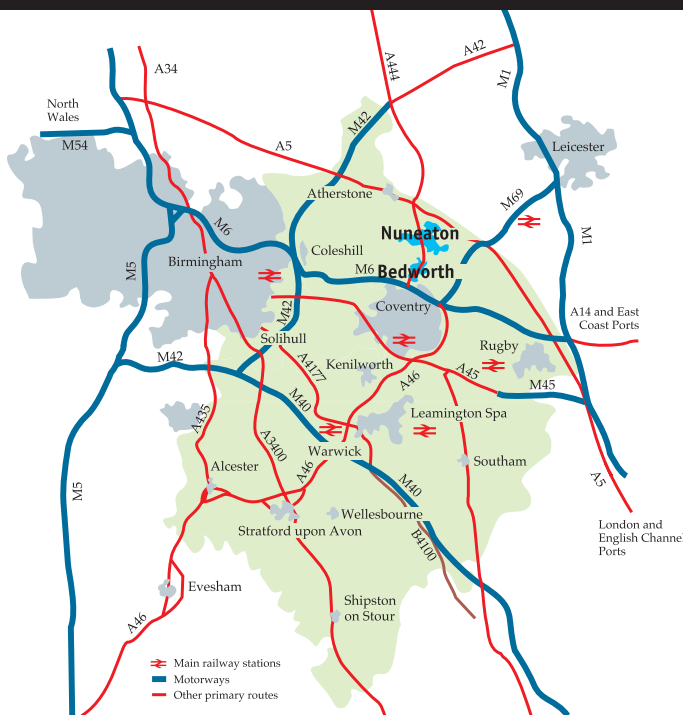
REFRESH ²⁰¹⁴ - ²⁰¹⁹

The Sustainable Community Plan
for Nuneaton and Bedworth

This five year plan supports and continues to deliver the aims and priorities of the
2007 -2021 Sustainable Community Plan: Shaping Our Future

CONTENTS

Your Priorities	Page 4
Local Strategic Partnership Priorities	
Theme 1: Healthy People	Page 6
Theme 2: Vibrant Economy	Page 8
Theme 3: Active Communities	Page 10
LSP Delivery Plans	Page 12
Glossary	Page 15



Facts about the borough

- Nuneaton and Bedworth covers 30.5 square miles, the majority of which is open space or countryside
- There are approximately 125,252 people in the borough a 5.1% increase since 2001
- There are 52,711 households in the borough
- 83.5% of people are very satisfied or fairly satisfied with their area as a place to live
- 79.3% of residents class their health as either good or very good with 6.2% saying that they have bad to very bad health
- Average life expectancy is 77.5 years for men and 81.9 years for women, the Warwickshire average is 79.1 years for men and 81.9 years for women
- The population is getting older 16.7% of the community are aged over 65 years
- 28% of people are recorded as having no formal qualifications. This is 5% above the average for England and Wales
- Of the 52,711 households in the borough, 28% are one person households - an increase of 2% since 2001
- 11.1% of people identify themselves as of a BME background compared to 8.9% in 2001
- Nuneaton contains nine Super Output Areas (SOA) that feature in the top 10% most deprived in England

Current LSP Members



While the Local Strategic Partnership currently works closely with those shown, many others are involved who encourage, help and promote the partnership, and they should also be recognised for their valued and continuing support.

Thanks go to Warwickshire Fire and Rescue Service, Job Centre Plus, Healthy Living Network, Warwickshire Chamber of Commerce, Warwickshire Connexions, Nuneaton Training Centre and you, our local residents.



Cohesion Project at Stockingford Recreation Ground

FOREWORD

As Chair of the Nuneaton and Bedworth Local Strategic Partnership, I would like to introduce our refreshed Community Plan for 2014 - 2019, which continues to support and deliver the aims and priorities of the Sustainable Community Plan: Shaping Our Future 2007-2021.

This Plan outlines the focus of the Partnership's delivery over the next five years and it will be used by agencies to commit resources, to best ensure we deliver our strategic priorities of Healthy People, Vibrant Economies and Active Communities within our borough.

Community planning is about a range of partners working together to better plan, resource and deliver quality services that meet the needs of people who live, work and visit Nuneaton and Bedworth. We recognise that improving the overall wellbeing of all local people will take time, and so we have developed a long-term vision for the borough.

We recognise it's not just about creating a plan or a vision, it's about working together to tackle major issues such as health; education; employment; housing and community safety, all of which affect people's quality of life on a daily basis.

These issues need a shared response from, and the full involvement of public sector agencies, local businesses, voluntary and community organisations and especially local people in order to improve the quality of life for everyone in the borough.

The Local Strategic Partnership in Nuneaton and Bedworth is committed to working together to make a difference to the lives of all local people.

Together with key partners who deliver services to those who live in our communities we will continue to work effectively together to deliver your priorities as outlined in this refreshed Community Plan.



Chair of the Local Strategic Partnership Councillor June Tandy

YOUR PRIORITIES!

Our aim has been to ensure that the Sustainable Community Plan 2007-2021 (the 'Plan') addresses as many priorities of local people as possible. For this refresh of the Plan we have used information from the Big Survey 2012 and Community Forums to identify the issues local people have. The detail within these, together with relevant research has been used to inform and develop this Plan.

Community Forum overview:

Warwickshire County Council, district and borough councils and Warwickshire Police work together across the county to hold regular meetings, known as community forums. Local health services and the voluntary sector are also involved.

Community forums are open public meetings, held four times per year at various locations within local areas on week day evenings. At the meetings residents have the chance to discuss what's important to them with local councillors, police, and organisations that provide public services.

Across Nuneaton and Bedworth there are seven Community Forums:

- Abbey and Wembrook
- Arbury and Stockingford
- Bede and Poplar
- Bedworth North and West
- Camp Hill and Galley Common
- Weddington and St Nicholas
- Whitestone and Bulkington



Abbey and Wembrook Community Forum

The key areas of concern for residents attending these meetings have been predominately around Community Safety issues and have included: anti-social behaviour, road safety (speeding and parking), reduction in street lighting; housing and the provision of activities for younger people

This information, along with the local policy context has been used to develop this Plan. However it does need to be recognised that with reducing budgets and resources, the LSP is focusing its delivery at a strategic level to maximise the widest contribution it has to meet the issues raised by communities.

Big Survey 2012

Details from this survey identified that the top 10 most important issues that residents thought made the Borough a good place to live are:

- 1) The level of crime
- 2) Clean Streets
- 3) Health Services
- 4) Public Transport
- 5) Parks and Open Spaces
- 6) Shopping Facilities
- 7) Education Provision
- 8) Affordable Homes
- 9) Road and Pavement Repairs
- 10) Level of traffic congestion

Over 50% of those responding to this questionnaire believe that a low level of crime and clean streets are important. 46% think that access to good health services is also important.



Your Local Strategic Partnership (LSP)

The aim of any LSP is to bring together organisations from the public, private, voluntary and community sectors to work together as a single group for the benefit of an area.

The Nuneaton and Bedworth LSP was first established in July 2003 and we believe that by working more closely together we will achieve more in improving the 'quality of life' within the borough.

Our Vision is that:

“In 2021, Nuneaton and Bedworth will be a place with strong, vibrant communities where everyone has access to opportunities, choices and high quality services”

The Partnership has developed this Vision to provide a long term approach that is complemented by a shorter term, three year action plan which will be monitored on a quarterly basis. Our aim is that these initiatives will make a measurable difference to the borough and narrow the disadvantage gap between Nuneaton and Bedworth at a countywide and national level. Our priorities have been identified after careful consideration of the changing dynamics and demographics of the borough, and these along with the information gained from communities form the principle driving force of this document.

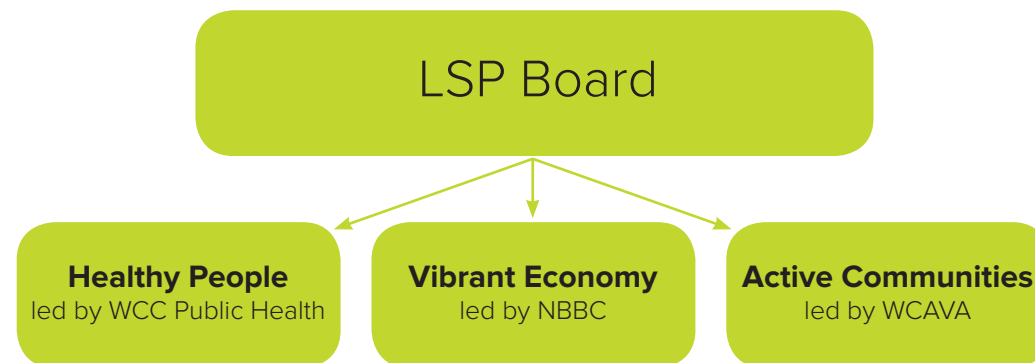
It needs to be recognised however that the Community Plan cannot be considered in isolation and it will be influenced and link closely to the emerging Borough Plan. In addition to this Plan, the Borough Plan will play a key role in shaping the future of Nuneaton and Bedworth up to 2031. It will influence what development takes place, how much and where within the borough it will be located. The Plan will outline a spatial vision and strategic objectives for the area, along with a strategy and policies to enable its delivery.

Who are we?

The LSP currently includes the following organisations:

- Nuneaton and Bedworth Borough Council
- Warwickshire County Council
- Warwickshire Community and Voluntary Action
- North Warwickshire and Hinckley College
- Warwickshire Police

It links to several other Partnerships which work to widen the opportunities for the borough. By seeking to add value to these Partnerships the LSP focuses on filling the 'strategic gaps' to meet the needs of the wider community and is delivered via the below structure:



LSP PRIORITIES:

In 2013 the LSP identified three strategic priorities:

Priority 1: Health

Priority 2: Economic Growth

Priority 3: Education Attainment and Aspirations

By combining the three LSP priorities with the information emerging from the Big Survey and Community Forums the LSP has agreed to deliver it's activity across three theme headings:

- Healthy People
- Vibrant Economy
- Active Communities

Theme 1: Healthy People

Our Aims:

- To tackle Health inequalities
- To increase physical activity levels
- To reduce Alcohol related Harm

Current picture:

The population of Nuneaton and Bedworth is approximately 125,000. The last census shows that Nuneaton and Bedworth's population grew at 5.1% since 2001. Projections show a predicted overall increase of 12.6% by 2033. In addition the population is ageing. The over 65 population is expected to grow by 43% by 2030. Inequalities in the population persist with life expectancy in Nuneaton and Bedworth significantly lower than the England average. At a ward level there is considerable variation in life expectancy.



Outdoor Gym, Queen Elizabeth Road, Camp Hill

There is a significantly high prevalence of obesity across the North of Warwickshire when compared to the national average. 29% of adults in Nuneaton and Bedworth are classified as obese compared to a Warwickshire average of 25% and a national average of 24.2%. In children, measurements of obesity are also above the Warwickshire rate at 9.9% in Nuneaton and Bedworth compared to 7.8% in the County. At Year 6, this rises to 17.7% in Nuneaton and Bedworth compared to 16.2% in Warwickshire as a whole

Increasing levels of alcohol related harm are also concerning. The rate of alcohol related hospital admissions in Nuneaton and Bedworth has seen an overall increase in the last 5 years in both males and females. The rate for males in Nuneaton and Bedworth is significantly above the England average.



Alcohol Week, Nuneaton Town Centre

By 2019, working in partnership, we will have ;

- Supported the delivery of the countywide Health and Wellbeing Strategy, in particular focusing on maintaining a healthy weight, smoking in pregnancy and alcohol related harm
- Developed and delivered three intergenerational community projects to promote healthy eating and lifestyles in the borough, which if successful can be considered as a regular project/ tool for tackling health inequalities
- Jointly commissioned Third Sector organisations to develop and implement community weight management sessions
- Developed and embedded the 'Making Every Contact Count' (MECC) agenda within our respective organisations
- Delivered periodical 'free school meal' campaigns to encourage the take up of meals and raise awareness of entitlements to wider benefits
- Delivered continuous smoking cessation information and advice
- Commissioned the delivery of sports development and sport and leisure facilities
- Commissioned the delivery of a range of health and fitness activities at leisure facility sites, parks and other appropriate locations across the borough to reach residents borough wide
- Jointly commissioned projects to encourage greater activity on the four outdoor gyms
- Supported the submission of joint bids where possible
- Worked with partners to produce and deliver a local action plan to tackle alcohol related harm
- Delivered annual programmes of health promotion activities in partnership during alcohol awareness weeks



Run for your Heart, Pingles Stadium and Riversley Park



Diabetes Awareness Week, Tesco, Bedworth

Theme 2: Vibrant Economy

Our Aims:

- To increase skills, employability and raise aspirations
- To support the local economy



Saxon Rise, Barrett's at Camp Hill

Current picture:

Nuneaton and Bedworth face a number of economic challenges. Household earnings are low compared with elsewhere in Warwickshire and unemployment is higher, although similar to the national average. A significant number of residents commute out of the borough for work and there is a need to tackle low aspirations and educational attainment to address high levels of deprivation within some communities.



Proposed MIRA development on the A5 corridor

Economic growth in Nuneaton and Bedworth is key to achieving the vision for the future of the area, contributing significantly to the health of residents and their quality of life. A robust and diverse economy will consequently be fostered through the improvement of existing, and development of new employment opportunities to enable the diversification of the borough's economy. This will be supported by measures to promote training, education and the accessibility of jobs for local people.

Within the borough there are disparities between different areas in terms of educational attainment. For example 71% of pupils living in the Weddington and St. Nicholas areas achieved 5 or more GCSEs at grades A* - C in 2012 compared to 46% of those pupils living in the Arbury and Stockingford areas



Community Clean-Up in Grove Farm. Inset: Before, Main: After.



Eliot Park Innovation Centre



Eliot Park Innovation Centre

By 2019, working in partnership, we will have;

- Contributed to the Local Enterprise Partnership (LEP) Skills Strategy
- Worked with the Coventry Solihull and Warwickshire Partnership to develop the Talent Match initiative for 18-24 year olds
- Utilised the European Structural fund 2014 – 2020 to facilitate competitiveness, employment and skills
- Worked with the LEP to implement a delivery plan for the City Deal which will include skills development
- Continued to implement the DWP and ESF programme to address worklessness and improve skills via the Priority Families Scheme
- Worked with skills providers to ensure adequate provision is secured to support the local economy and encourage inward investment
- Developed strategic Town Centre Plans for both towns and delivered early priorities.
- Prepared and adopted an economic growth strategy identifying actions to support growth and diversification of the borough's economy for delivery in conjunction with public and private sector partners.

Theme 3: Active Communities

Our Aims:

- To develop strong and safer communities
- To give everyone the opportunity of living in a decent, affordable home
- To develop community and voluntary organisations



Cohesion Project, Grove Farm tunnel

Current picture:

The borough of Nuneaton and Bedworth is geographically the smallest borough within the county with the highest population density. It has an extremely active Community and Voluntary Sector with approximately 450 groups or organisations offering a wide array of support services or activities for the boroughs residents. This is key in assisting communities to address the issues associated with the borough being placed within the top third most deprived Local Authority districts in England, with 28% of people above the age of 16 having no formal qualification.



Hate Crime Project Launch, Town Hall, Nuneaton

In overall terms the borough is one of the most diverse areas in Warwickshire with neighbourhoods that have strong local identities and heritage. Creating strong, connected and empowered communities is crucial in addressing the challenges facing the borough as a whole. In order to raise aspirations, make communities feel safer have communities groups that are even more knowledgeable and empowered will not be easy but is very much a key aim of the Local Strategic Partnership.

Nuneaton and Bedworth also experiences some of the highest levels of crime and anti-social behaviour in the county. Whilst data from 2012-13 favourably demonstrate that crime was reducing, indications in 2013 were that all priority areas of crime and disorder which are overseen by the Nuneaton and Bedworth Safer Communities Partnership (NABSCOP), with the exception of theft of vehicles, is increasing.



Groundbreaking at Camp Hill new build

By 2019, working in partnership, we will have;

- Delivered the Nuneaton and Bedworth Safer Communities Partnership action plan and 'Crime and Disorder Strategy 2013 -2016,' focusing on the priorities of Anti-Social Behaviour, Violent Crime and Acquisitive Crime (Burglary and Vehicle Crime), and adopted and worked toward delivering the 2016-2019 Strategy thereafter
- Commissioned the Recovery Partnership to deliver interventions to reduce the harm caused by alcohol and substance misuse
- Worked with the families in greatest need to reduce ASB and crime, educational attendance and worklessness via the Priority Families project
- Utilised the Councillor Grants Scheme and 'community computers' scheme to support grass-roots local projects
- Dedicated community development to support grass-roots community action and volunteering in targeted neighbourhoods
- Re-commissioned and re-focused voluntary sector support services
- Continued to support vibrant cohesive communities and improve capacity of organisations
- Commissioned organisations to deliver support and guidance to community groups and organisations
- Developed low-level community support services, and supporting community-managed venues to act as local service hubs
- Worked to provide a choice of housing to meet the needs of residents in the borough
- Worked to ensure everyone has the opportunity to live in a safe, warm and affordable home
- Worked with Swanswell to support independent living for people with substance misuse issues
- Built and tenanted 52 new Council managed homes by 2015/16 and progressed plans to identify other sites for redevelopment for Council homes
- Implemented measures to address fuel poverty



Community Safety Event, Bedworth Town Centre

To find out more, please contact the Communities Team, NBBC on **024 7637 6322** or email: **communities@nuneatonandbedworth.gov.uk**

Theme: Healthy People

Aim	By 2019, working in partnership, we will have:	Lead agency
Tackle Health inequalities	<p>Supported the delivery of the countywide Health and Wellbeing Strategy in particular focusing on maintaining a healthy weight, smoking in pregnancy and alcohol related harm</p> <p>Developed and delivered 3 intergenerational community projects to promote healthy eating and lifestyles in the borough, which if successful can be considered as a regular project/tool for tackling health inequalities.</p> <p>Jointly commissioned Third Sector organisations to develop and implement targeted community weight management sessions</p> <p>Developed and embedded the 'Making Every Contact Count'(MECC) agenda within our respective organisations</p> <p>Delivered periodical 'free school meal' campaigns to encourage the take up of meals and raise awareness of entitlements to wider welfare benefits</p> <p>Delivered continuous smoking cessation information and advice</p> <p>Commissioned the delivery of sports development and sport and leisure facilities</p>	<p>WCC</p> <p>NBBC</p> <p>NBBC / WCC</p> <p>WCC / (All)</p> <p>WCC</p> <p>WCC</p> <p>NBBC</p>
Increase physical activity levels	<p>Commissioned the delivery of a range of health and fitness activities at leisure facility sites, parks, and other appropriate locations across the borough to reach residents borough wide.</p> <p>Jointly commissioned projects to encourage greater activity on the four outdoor green gyms</p> <p>Support the joint submission of funding bids where possible</p>	<p>NBBC</p> <p>NBBC / WCC</p> <p>NBBC / WCC</p>
Reduce Alcohol Related Harm	<p>Worked with partners to produce and deliver a local action plan to tackle alcohol related harm</p> <p>Delivered annual programmes of health promotion activities in partnership during alcohol awareness weeks</p>	<p>NBBC / WCC</p> <p>NBBC / WCC</p>

Theme: Vibrant Economy

Aim	By 2019, working in partnership, we will have:	Lead agency
Increase skills and employability and Raise Aspirations	<p>Contributed to the Local Economic Partnership (LEP) Skills Strategy</p> <p>Worked with the Coventry Solihull and Warwickshire Partnership to develop and deliver the Talent Match initiative for 18-24 year olds</p> <p>Utilised the European Structural fund 2014 – 2020 to facilitate competitiveness, employment and skills</p> <p>Worked with the LEP to implement a delivery plan for the City Deal which will include skills development.</p> <p>Continued to implement the DWP and ESF programme to address worklessness and improve skills via the Priority Families Scheme</p>	<p>WCC / NWHC</p> <p>WCC / NBBC</p> <p>WCC</p> <p>WCC / NWHC</p> <p>WCC</p>
Support the Local economy	<p>Worked with skills providers to ensure adequate provision is secured to support the local economy and encourage inward investment</p> <p>Developed strategic town centre plans for both towns and delivered early priorities.</p> <p>Prepared and adopted an economic growth strategy identifying actions to support growth and diversification of the borough's economy for delivery in conjunction with public and private sector partners.</p> <p>Adopted a Nuneaton and Bedworth Borough Plan promoting and enabling economic growth and diversification.</p>	<p>NWHC</p> <p>NBBC</p> <p>NBBC</p> <p>NBBC</p>

Theme: Active Communities

Aim	By 2019, working in partnership, we will have:	Lead agency
To develop Safer and Stronger Communities	<p>Delivered the Nuneaton and Bedworth Safer Communities Partnership action plan and 'Crime and Disorder Strategy 2013 -2016' focusing on the priorities of Anti-Social Behaviour, Violent Crime and Acquisitive Crime (Burglary and Vehicle Crime), and adopted and worked toward delivering the 2016-2019 Strategy thereafter.</p> <p>Commissioned the Recovery Partnership to deliver interventions to reduce the harm caused by alcohol and substance misuse</p> <p>Worked with the families in greatest need in the borough to reduce ASB and crime, educational attendance and worklessness via the Priority Families project</p> <p>Utilised the Councillor Grants Scheme and 'community computers' scheme to support grass-roots local projects</p> <p>Dedicated community development to support grass-roots community action and volunteering in targeted neighbourhoods</p> <p>Re-commissioned and re-focussed voluntary sector support services</p> <p>Continued to support vibrant cohesive communities and improve capacity of organisations</p> <p>Commissioned organisations to deliver support and guidance to community groups and organisations</p> <p>Developed low-level community support services, and supporting community-managed venues to act as local service hubs</p>	<p>NBBC</p> <p>WCC</p> <p>WCC</p> <p>WCC</p> <p>WCC</p> <p>WCC / NBBC</p> <p>WCAVA</p> <p>NBBC / WCC</p> <p>WCC</p>
Housing	<p>Worked to provide a choice of housing to meet the needs of residents in the borough</p> <p>Worked to ensure everyone has the opportunity to live in a safe, warm and affordable home</p> <p>Worked with Swanswell to support independent living for people with substance misuse issues</p> <p>Built and tenanted 52 new Council managed homes by 2015/16 and progressed plans to identify other sites for redevelopment for council homes.</p> <p>Implemented measures to address fuel poverty</p>	<p>NBBC</p> <p>NBBC</p> <p>WCC</p> <p>NBBC</p> <p>NBBC</p>

Acronym	Detail
ASB	Anti- Social Behaviour
BME	Black, Minority, Ethnic
DWP	Department for Work and Pensions
ESF	European Social Fund
IMD	Indices of Multiple Deprivation
IOM	Integrated Offender Management
LEP	Local Enterprise Partnership
LSP	Local Strategic Partnership
MECC	Making Every Contact Count
NABSCOP	Nuneaton and Bedworth Safer Communities Partnership
NBBC	Nuneaton and Bedworth Borough Council
NWHC	North Warwickshire and Hinckley College
SOA	Super Output Area
WCAVA	Warwickshire Community and Voluntary Action
WCC	Warwickshire County Council

Your Sustainable Community Plan 'Shaping Our Future' has been prepared by the Local Strategic Partnership for Nuneaton and Bedworth.

If you would like further information about your Local Strategic Partnership, your Sustainable Community Plan or if you would like to see what is happening and what progress is being made then please visit: www.nblsp.org.uk



This document is also available in other languages on request:

এই ডকুমেন্ট অন্য ভাষায়, বড় প্রিন্ট আকারে এবং অডিও টেপ আকারেও অনুরোধে পাওয়া যায়।

આ દસ્તાવેજ વિનંતી કરવાથી બીજી ભાષાઓ, મોટા છાપેલા અક્ષરો અથવા ઓડિઓ રચનામાં પણ મળી રહેશે.




अनुरोध पर यह दस्तावेज़ अन्य भाषाओं में, बड़े अक्षरों की छपाई और सुनने वाले माध्यम पर भी उपलब्ध है।

本文件也可应要求，制作成其它语文或特大字体版本，也可制作成录音带。

Dokument ten jest na życzenie udostępniany także w innych wersjach językowych, w dużym druku lub w formie audio.

ਇਹ ਦਸਤਾਵੇਜ਼ ਹੋਰ ਭਾਸ਼ਾਵਾਂ ਵਿਚ, ਵੱਡੇ ਅੱਖਰਾਂ ਵਿਚ ਅਤੇ ਆਡੀਓ ਟੇਪ 'ਤੇ ਰਿਕਾਰਡ ਹੋਇਆ ਵੀ ਮੰਗ ਕੇ ਲਿਆ ਜਾ ਸਕਦਾ ਹੈ।

درخواست پر یہ دستاویز دیگر زبانوں میں، بڑے حروف کی چھپائی اور سننے والے ذرائع پر بھی میسر ہے۔

Also available in  Large Print,  CD Rom,  Audio Tape and Braille on request.

Contact us on: 024 7637 6376

RNIB TYPETALK : 18001 024 7637 6376 