

Nuneaton and Bedworth Borough Council

Accessibility and Settlement Hierarchy Study

2023

Contents

2. Introduction.....	3
3. Methodology and Data Collection.....	5
4. Survey Results and Analysis.....	17
5. Conclusion and Recommendations	39
6. Establishing a Settlement Hierarchy	40
Appendix 1 – Settlement Scores.....	41

2. Introduction

The most recent Accessibility and Settlement Hierarchy Study was produced in 2011 and therefore, there is an identified need for an update to be undertaken. The settlement hierarchy is associated with development principles which inform the Borough Plan Review. The update considers the current settlement hierarchy structure to ensure it reflects present day settlements, within Nuneaton and Bedworth, and to help direct new development to the most sustainable locations alongside areas with the capacity to accommodate further growth.

This study identifies where there are deficits in facility provision but will primarily be a tool for justifying a suitable settlement hierarchy for the Borough Plan Review.

The key elements assessed to determine accessibility are those which are the key basic services and facilities required by a person living in a town or village. For example, food, access to education, recreation, employment and transport. A town or village without these key elements is more than likely to result in its residents having to travel by private car to be able to access them.

Aims of the study

- To identify which settlements in Nuneaton and Bedworth are the most sustainable.
- To confirm or update the settlement hierarchy depicted in Policy DS2 of the Borough Plan (2011-2031).

Objectives of the study

- Identify the settlements in Nuneaton and Bedworth Borough.
- Provide contextual information on each settlement.
- Identify the key elements in each settlement.
- Measure accessibility to services and facilities.
- Score each settlement against a list of pre-determined criteria.
- Compare and contrast the accessibility and sustainability of each of the settlements with a view to highlighting potential areas for service and/or facility improvement.

Scope of the study

The study assesses the following settlements within Nuneaton and Bedworth Borough:

- Nuneaton
- Bedworth
- Bulkington
- Ash Green/Neal's Green
- Keresley

This study will determine if the settlement hierarchy, defined in Policy DS2 of the Borough Plan (2011-2031), is up-to-date and can be used as part of the Borough Plan Review. This will be decided after reviewing the context and assessing the services and facilities of the relevant settlements. The settlement hierarchy is a reflection of the size and range of provision available in the settlement, as well as the policies relevant to the future growth of that settlement. The purpose of a settlement hierarchy is to establish which settlements can support growth, and it will be used as a framework against which future levels of development can be determined.

3. Methodology and Data Collection

Settlements to be assessed

The settlement boundaries are identified, for the following settlements, in Figures 1 – 6:

- Nuneaton
- Bedworth
- Bulkington
- Ash Green/Neal's Green
- Keresley

Data collection

The study collects two main datasets:

- Contextual and demographic information.
- Information on key services, facilities and accessibility to services/facilities.

Contextual information

Contextual information has been collected using the following sources of information.

The information below lists the contextual information collected for the settlements:

- Borough Plan (2011-2031) policy designations: *Used to give an understanding of previous designations.*
- Settlement area (ha): *Used to give an indication of the physical size of the settlement.*
- Population (estimates based on [Census 2021 output areas](#)): *Used to give an indication of how many people live in each settlement, and therefore, how many people the settlement supports.*
- Location description: *Used to describe the area.*

Key Services, Facilities and Activities accessibility information

Table 1: Scoring criteria.

Criteria	Facility	Service	Activity	Comment	Source of data
Bus stops	X			The presence of a bus stop indicates whether the settlement can be accessed by public transport (bus).	Warwickshire County Council (2023). <i>Public transport maps by area in PDF – Nuneaton and Bedworth</i> . Nuneaton and Bedworth Town Map (warwickshire.gov.uk)
Bus frequency		X		Where a settlement has a more frequent bus service, it can be considered more sustainable, as they provide residents with a higher level of accessibility to key service centres.	Stagecoach (2023). <i>Bus Times and Timetables</i> . Live Bus Times & Timetables Stagecoach (stagecoachbus.com)
Proximity to defined on/off road cycle routes	X			The presence of a cycle route indicates whether a settlement is accessible by sustainable modes of transport.	Warwickshire County Council (2022). <i>Nuneaton and Bedworth Active Travel map</i> . untitled (warwickshire.gov.uk) (Nuneaton, Bedworth and Bulkington) Coventry City Council (n.d.). <i>Coventry cycle map</i> . coventry.gov.uk/download/s/file/9944/coventry_cycle_map (Ash Green/Neal's Green and Keresley)
Train stations	X			The presence of a train station indicates whether the settlement can be accessed by public transport (train).	Nuneaton and Bedworth Borough Council (2018/19). <i>Borough Plan Policies Map</i> . BOROUGH PLAN POLICIES MAP (FINA (amazonaws.com))

Community transport services		X	Community transport services provide transport for people without access to their own car and/or are unable to use public transport. It's an important measure of a settlement's accessibility to distant destinations.	Volunteer Friends (2023). <i>Connecting Communities through Social Interaction – Community Transport Services</i> . Community Transport Services Volunteer Friends
School buses		X	Provision of a school bus service allows students to access educational facilities.	Warwickshire County Council (2023). <i>School bus timetables</i> . School bus timetables – Warwickshire County Council
Post offices	X		Post offices have traditionally provided a vital service to rural areas, allowing access to a wide range of services. Especially important to the elderly who may not be able to travel outside the settlement and/or may not have access to internet services.	Post Office (2023). <i>Branch Finder</i> . Branch Finder Post Office
Post boxes	X		Post boxes allow people to correspond with others and to order goods and services which may not be available locally.	Post Box Finder (2023). <i>Post boxes in and near Nuneaton CV11</i> . Post boxes in and near Nuneaton CV11 Post Box Finder & Collection Times
Chemists/ Pharmacies	X		Provides additional healthcare	NHS (n.d.). <i>Find a pharmacy</i> Find a pharmacy - NHS (www.nhs.uk)

			services and allows residents to pick up prescriptions without having to travel long distances.	
Petrol stations	X		Provides a vital service and reduces the need to travel.	UK Petrol (2023). <i>Petrol Stations in Nuneaton</i> . The Best Petrol Stations in Nuneaton UKPetrol.com
Gambling outlets	X		Provision of this facility could reduce the need to travel for those wishing to use a gambling outlet.	Gambling Commission (2023) <i>Register of gambling premises</i> . Register of gambling businesses (gamblingcommission.gov.uk)
Take-aways	X		Provides residents with a choice of food outlets.	Nuneaton and Bedworth Borough Council (2020). <i>Planning for a healthier area – hot food takeaways SPD</i> . Supplementary planning documents Nuneaton & Bedworth (nuneatonandbedworth.gov.uk)
Libraries	X		A local community service provides information, allows people to make informed decisions, supports education and provides affordable access to literature and other media services.	Warwickshire County Council (n.d.). <i>Libraries</i> . Libraries – Warwickshire County Council
Mobile libraries	X		A mobile library can reduce the need to travel to access this service.	Warwickshire County Council (2023). <i>Mobile libraries: Library routes</i> . Mobile Libraries: Library routes (warwickshire.gov.uk)
Community centres	X		Provides a location for	Nuneaton and Bedworth Borough Council (2023).

			community activities and events.	<i>Community centres.</i> Newtown Community Centre - Nuneaton Community centres Nuneaton & Bedworth (nuneatonandbedworth.gov.uk)
Fire stations	X		Impacts upon response time if settlements are remote from a fire station.	Warwickshire County Council (2023). <i>Find a fire station.</i> Find a fire station – Warwickshire County Council
Police stations	X		A police station can help increase a feeling of safety and security, provides a police presence in the town/village and reduces the fear of crime.	Warwickshire Police (2023). <i>Nuneaton and Bedworth Borough.</i> Nuneaton Town Centre Your area Warwickshire Police Warwickshire Police
Community safety		X	The safety partnership works closely with partner agencies to reduce crime and the fear of crime in the Borough.	Nuneaton and Bedworth Borough Council (2023). <i>Nuneaton and Bedworth Community Safety Partnership.</i> Nuneaton and Bedworth Borough Warwickshire Police
Equipped Areas for Play	X		Provides children with a place to play.	Nuneaton and Bedworth Borough Council (2023). <i>Play areas.</i> Play areas Nuneaton & Bedworth (nuneatonandbedworth.gov.uk) Nuneaton and Bedworth Borough Council (2023). <i>Parks and green spaces.</i> Destination parks Parks and green spaces Nuneaton & Bedworth (nuneatonandbedworth.gov.uk)
Destination parks	X		Provides an open space for all to enjoy and allows	Nuneaton and Bedworth Borough Council (2023). <i>Parks and green spaces.</i>

			exercise to take place for informal recreation.	Destination parks Parks and green spaces Nuneaton & Bedworth (nuneatonandbedworth.gov.uk)
Sports pitches	X		Provides open space for more formal recreational activities to take place.	Nuneaton and Bedworth Borough Council (2023). <i>Sport pitches</i> . Find your nearest leisure centre - Everyone Active
Rented social housing	X		Can offer people a choice of accommodation to meet needs. It may allow elderly residents to continue to live in the village with some support care.	Nuneaton and Bedworth Borough Council internal monitoring data.
Meals on Wheels		X	Provides a vital service to the mobility impaired and elderly and may allow residents to continue living in their home for longer.	Healthy Living Network (n.d.). <i>Meals on Wheels</i> . Meals on Wheels The Healthy Living Network
Broadband		X	The use of internet services is increasing, and the provision of broadband can allow quicker access to these services.	Assumption that the entire Borough has access in 2023.
Youth groups		X	Can provide a useful extra-curricular activity for younger members of the population.	Warwickshire County Council (n.d.). <i>Targeted Youth Support (TYS)</i> . Targeted Youth Support (TYS) – Warwickshire County Council Nuneaton and Bedworth Borough Council (2023).

					Nuneaton club for Young People. Nuneaton Club for Young People Community centres Nuneaton & Bedworth (nuneatonandbedworth.gov.uk)
GP Surgeries/ Doctors Health Centres	X			Access to a doctor is important to provide for the ongoing health needs of residents.	NHS (n.d.). <i>Find a GP.</i> Find a GP - NHS (www.nhs.uk)
Hospitals	X			Access to a hospital is important in terms of emergency health needs.	NHS (n.d.). <i>Find a hospital.</i> Find a hospital - NHS (www.nhs.uk)
Dentists	X			Dentists are an important healthcare facility.	NHS (n.d.). <i>Find a dentist.</i> Find a dentist - NHS (www.nhs.uk)
Opticians	X			Opticians are an important healthcare facility.	NHS (n.d.). <i>Find an NHS sight test.</i> Sight Tests - NHS (www.nhs.uk)
Nurseries	X			Local childcare can be particularly important for working families.	Nuneaton and Bedworth Borough Council internal monitoring data.
Primary schools	X			Reduces the need for children to travel long distances.	Warwickshire County Council (2023). <i>Find a school.</i> Find a School (warwickshire.gov.uk)
Secondary schools	X			Reduces the need for children to travel long distances.	Warwickshire County Council (2023). <i>Find a school.</i> Find a School (warwickshire.gov.uk)
College or Further Education	X			Likely to be more concentrated in one area. However, access to this provision is still important for the education of	Google search of both 'colleges' and 'further education' for each settlement in the borough.

			local young people.	
Town Centres		X	Access to a Town Centre is important for residents who need access to a wide range of services and facilities. Access to the Town Centre is also important in terms of employment provision.	Nuneaton and Bedworth Borough Council (2022). <i>Retail, Leisure and Office Study</i> .
Defined District Centres		X	Access to a District Centre gives residents a choice of local retail outlets.	Nuneaton and Bedworth Borough Council (2022). <i>Retail, Leisure and Office Study</i> .
Industrial Estates		X	Distance to the nearest primarily employment area shows the potential minimum distance residents may have to travel to access work.	Iceni (2023). <i>Review of Nuneaton and Bedworth Employment Land Portfolio</i> .

A traffic light scoring system has been used to undertake a sustainability assessment of each settlement based on its accessibility. The key below illustrates the levels of sustainability and Table 2 illustrates how each criterion was scored in terms of assessing its sustainability based on accessibility.

Settlement analysis was carried out via desk top surveys. Where a settlement did not contain a particular service/facility, a distance was measured to the nearest service/facility. This illustrates where there is a deficiency in a service/facility and the level of accessibility to the nearest available service/facility.

SUSTAINABLE
IMPROVEMENTS REQUIRED TO IMPROVE SUSTAINABILITY
UNSUSTAINABLE – MAJOR IMPROVEMENTS REQUIRED TO BE SUSTAINABLE

Table 2: Scoring matrix.

Criteria	Facility	Service	Activity	Score	Green	Score	Amber	Score	Red
Bus stops	X			2	Available in settlement	1	Within 400m of settlement boundary	0	Over 400m from settlement boundary
Bus frequency		X		2	Hourly or less	1	2 hours or less	0	More than 2 hours
Proximity to defined on/off road cycle routes	X			2	Available in settlement	1	Within 800m of settlement boundary	0	Over 800m from settlement boundary
Train stations	X			2	Available in settlement	1	Within 800m of settlement boundary	0	Over 800m from settlement boundary
Community transport services		X		2	Available in settlement	1	N/A	0	Not provided
School buses		X		2	Available in settlement	1	N/A	0	Not provided
Post offices	X			2	Available in settlement	1	Within 800m of settlement boundary	0	Over 800m from settlement boundary
Post boxes	X			2	Available in settlement	1	Within 400m of settlement boundary	0	Over 400m from settlement boundary
Chemists/Pharmacies	X			2	Available in settlement	1	Within 800m of settlement boundary	0	Over 800m from settlement boundary

Petrol stations	X			2	Available in settlement	1	Within 4000m of settlement boundary	0	Over 4000m from settlement boundary
Gambling outlets	X			2	Available in settlement	1	Within 800m of settlement boundary	0	Over 800m from settlement boundary
Take-aways	X			2	Available in settlement	1	Within 400m of settlement boundary	0	Over 400m from settlement boundary
Libraries	X			2	Available in settlement	1	Within 800m of settlement boundary	0	Over 800m from settlement boundary
Mobile libraries	X			2	One or more visits per week or permanent facility within 800m	1	Less than one visit per week or no permanent facility within 800m	0	No visits and no permanent facility within 800m
Community centres	X			2	Available in settlement	1	Within 600m of settlement boundary	0	Over 600m from settlement boundary
Fire stations	X			2	Available in settlement	1	Within 1000m of settlement boundary	0	Over 1000m from settlement boundary
Police stations	X			2	Available in settlement	1	Within 800m of settlement boundary	0	Over 800m from settlement boundary
Community safety		X		2	Available in settlement	1	N/A	0	Not provided

Equipped Areas for Play	X			2	Available in settlement	1	Within 400m of settlement boundary	0	Over 400m from settlement boundary
Destination parks	X			2	Available in settlement	1	N/A	0	Not provided
Sports pitches	X			2	Available in settlement	1	Within 1200m of settlement boundary	0	Over 1200m from settlement boundary
Rented social housing	X			2	Available in settlement	1	N/A	0	Not provided
Meals on Wheels		X		2	Available in settlement	1	N/A	0	Not provided
Broadband		X		2	Available in settlement	1	N/A	0	Not provided
Youth groups			X	2	Available in settlement	1	Activity provided in neighbouring settlement	0	Not provided
GP Surgeries/Doctors Health Centres	X			2	Available in settlement	1	Within 1000m of settlement boundary	0	Over 1000m from settlement boundary
Hospitals	X			2	Available in settlement	1	Within 5000m of settlement boundary	0	Over 5000m from settlement boundary
Dentists	X			2	Available in settlement	1	Within 1000m of settlement boundary	0	Over 1000m from settlement boundary
Opticians	X			2	Available in settlement	1	Within 1000m of settlement boundary	0	Over 1000m from settlement boundary

Nurseries	X			2	Available in settlement	1	Within 600m of settlement boundary	0	Over 600m from settlement boundary
Primary schools	X			2	Available in settlement	1	Within 600m of settlement boundary	0	Over 600m from settlement boundary
Secondary schools	X			2	Available in settlement	1	Within 1500m of settlement boundary	0	Over 1500m from settlement boundary
Colleges or Further Education	X			2	Available in settlement	1	Within 4000m of settlement boundary	0	Over 4000m from settlement boundary
Town Centres		X		2	Available in settlement	1	Within 2000m of settlement boundary	0	Over 2000m from settlement boundary
Defined District Centres		X		2	Available in settlement	1	Within 800m of settlement boundary	0	Over 800m from settlement boundary
Industrial Estates		X		2	Available in settlement	1	Within 2000m of settlement boundary	0	Over 2000m from settlement boundary

Sources of information for Scoring Matrix

The distances, in the scoring matrix above, are based on the following source:

Barton, H., Grant, M. and Guise, R. (2021). *Shaping Neighbourhoods: For Local Health and Global Sustainability*.

This source does not provide distances for all the facilities listed above. Therefore, the distance of a similar facility has been used, where applicable.

4. Survey Results and Analysis

Assessment of Key Characteristics

This section looks at the key characteristic, similarities and differences of the settlements.

The below map (Figure 1) illustrates the extent of Nuneaton and Bedworth Borough, including the location of each of its settlements, depicted through the red settlement boundary lines.

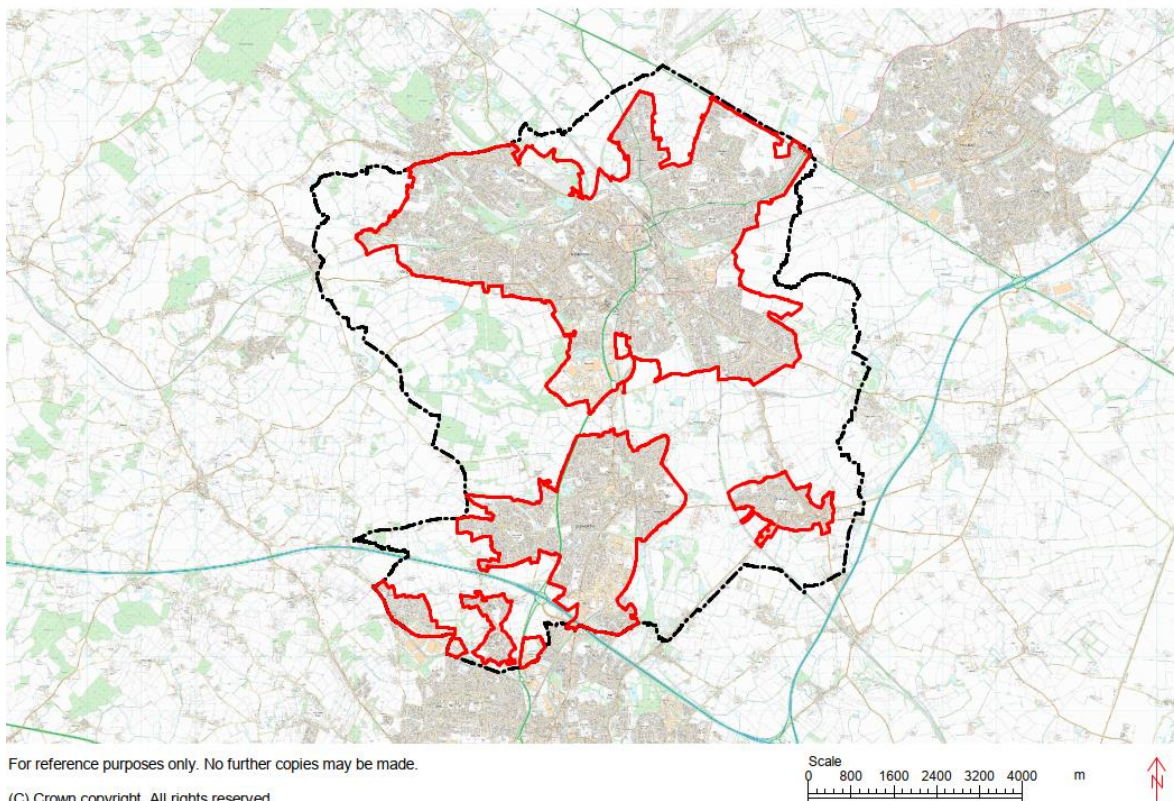


Figure 1: Borough Urban Areas.

Profile: Nuneaton

Location

Nuneaton town is located roughly 9 miles north of Coventry city centre and 20 miles east of Birmingham. Figure 2 depicts the settlement of Nuneaton. Historically, the local economy depended heavily on coal mining, other extractive industries and heavy engineering, and there was a big influx of workers in the area to serve them. As these declined, many of the skills were transferable to the car industry in the West Midlands, particularly in Coventry. The sharp decline in all these industries from the 1960s resulted in significant

levels of unemployment, reflected in a reducing percentage of residents working within the town.

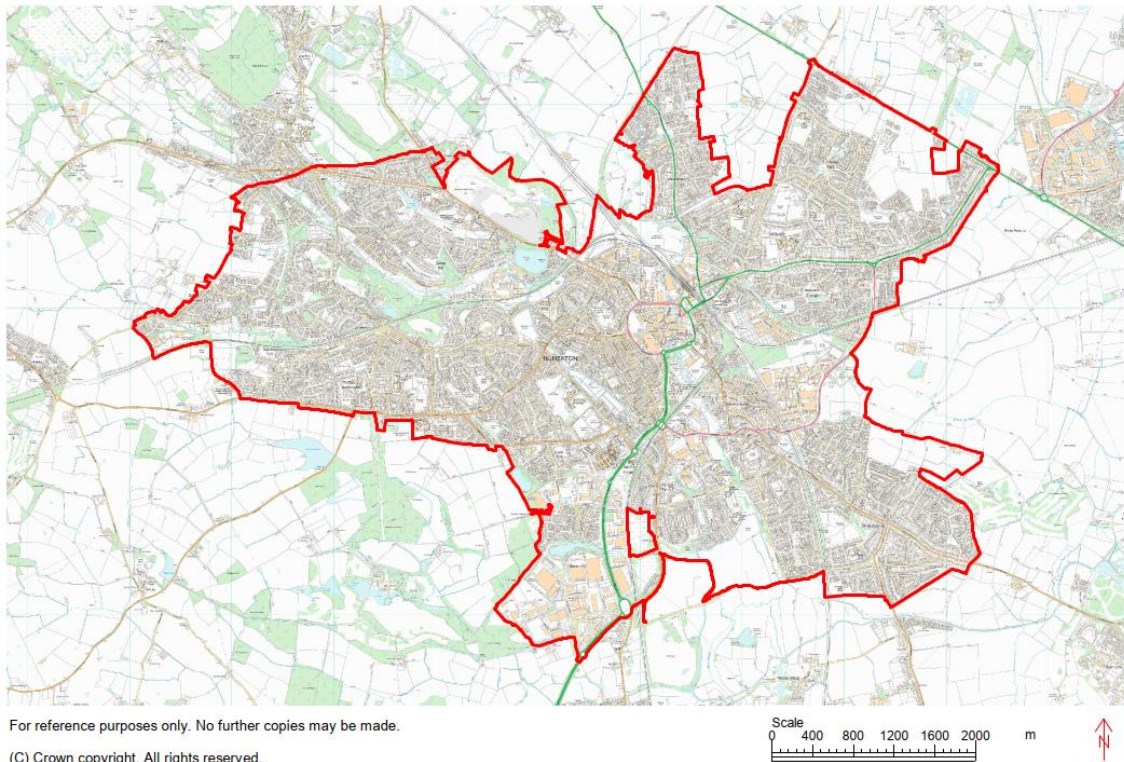


Figure 2: Nuneaton Urban Area.

Nuneaton Town Centre is the main retail and commercial centre of the Borough. Within the Centre there is the Ropewalk and Abbeygate shopping centres, the Borough's main library, King Edward VI College and Warwickshire Justice Centre. Part of the Town Centre is designated a Conservation Area. Close to the Town Centre is Riversley Park, a Victorian park that sits alongside the River Anker and provides the setting for the Borough Council's museum and art gallery.

Away from the Town Centre other job opportunities include working at Bermuda Industrial Estate and Attleborough Fields Industrial Estate.

Population

94,600 (2021 Census population estimate).

Borough Plan (2011-2031) planning policy designation

The Borough Plan (2011-2031) designates Nuneaton Town Centre under policy TC3 – Hierarchy of centres. This policy intends to maintain and enhance the vitality and viability of town centres, whilst encouraging a good standard of design, enhancing the appearance of the centre.

Profile: Bedworth

Location

Bedworth is a market town set in the south of Nuneaton with Saxon origins (Figure 3). The area developed into an industrial town in the 18th and 19th centuries due largely to coal mining and the overspill of ribbon weaving and textile industries from nearby Coventry.

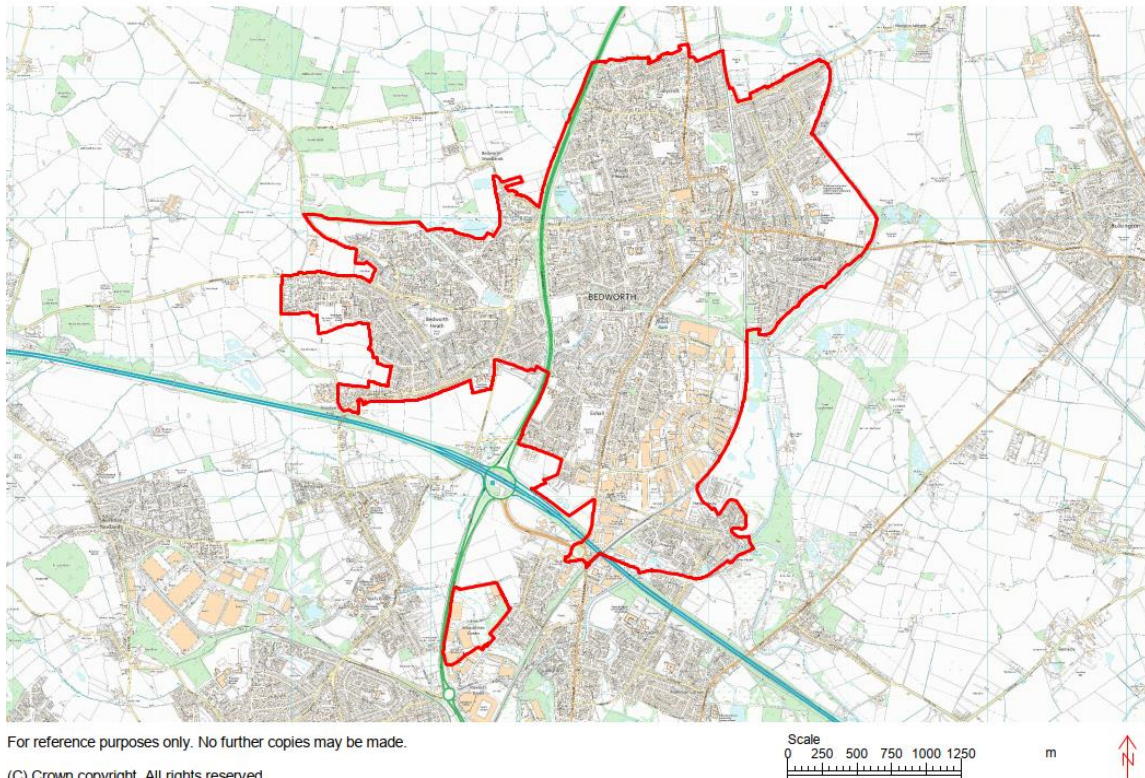


Figure 3: Bedworth Urban Area.

The town includes a range of services and facilities including independent shops and branches of high street stores, an award-winning covered market three times a week, a library, emergency services, Civic Hall, arts centre and leisure centre. Other facilities include the Miners Welfare Park and sports and play areas. Historical landmarks include Nicholas Chamberlaine Almshouses, the Parsonage Heritage Centre and Bedworth Water Tower.

Employment opportunities are in the southeast of the town in Bayton Road Industrial Estate and neighbouring Blackhorse Road Industrial Estate.

Population

31,400 (2021 Census population estimate).

Borough Plan (2011-2031) planning policy designation

The Borough Plan (2011-2031) designates Bedworth Town Centre under policy TC3 – Hierarchy of centres. This policy intends to maintain and enhance the vitality and viability of town centres, whilst encouraging a good standard of design, enhancing the appearance of the centre.

Profile: Bulkington

Location

Bulkington is an historical village located in the eastern part of the Borough and dates back to the Domesday Book when it was referred to as Bochintone, meaning 'town of the beech trees' (Figure 4). The large village was developed on the back of the weaving industry, brought to the area by French Huguenots in the 17th century. Today it is now predominantly a commuter village for the larger nearby towns. The historic core is protected by a Conservation Area designation and the village has a District Centre with a range of shops and services.

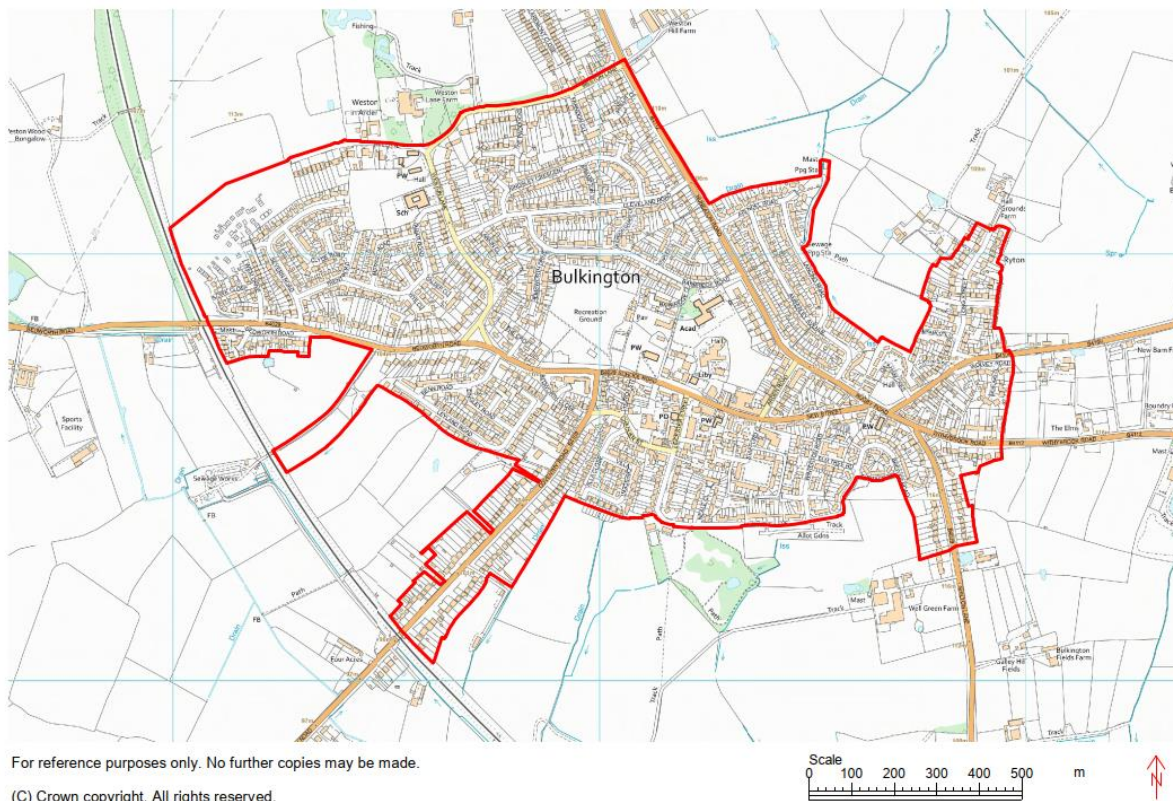


Figure 4: Bulkington Urban Area.

Population

5,200 (2021 Census population estimate).

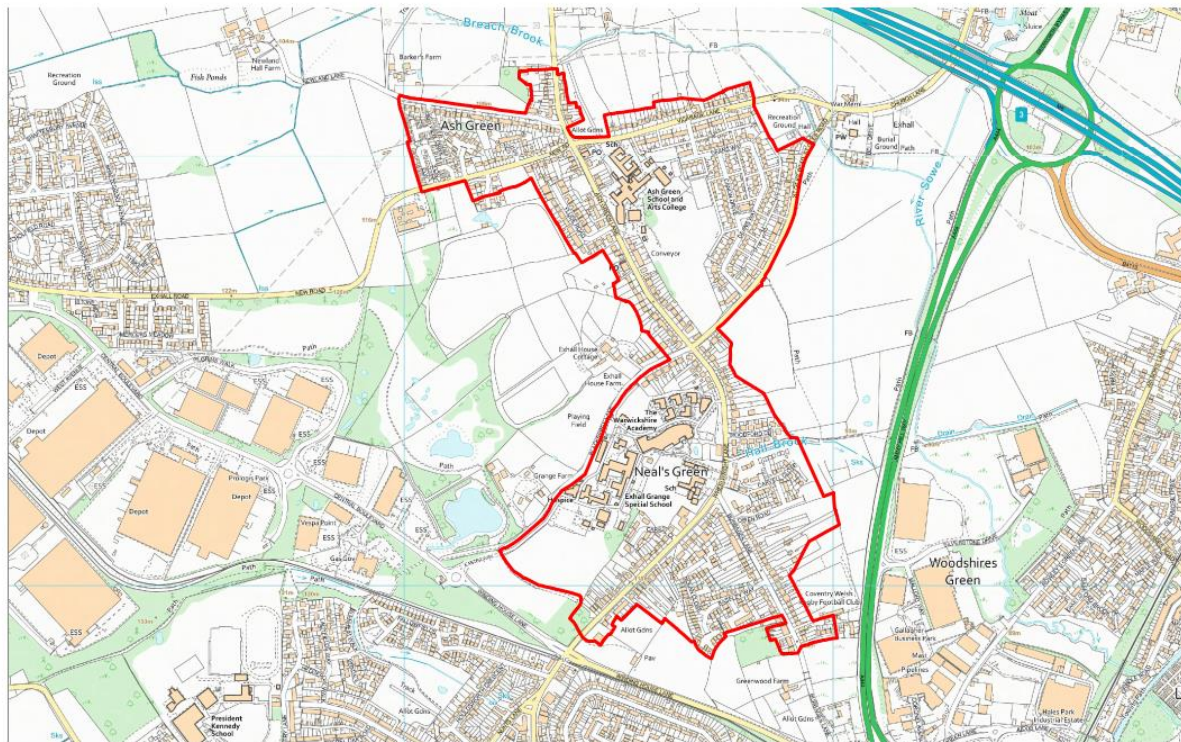
Borough Plan (2011-2031) planning policy designation

No Borough Plan (2011-2031) planning policy designation.

Profile: Ash Green/Neal's Green

Location

Ash Green/Neal's Green forms a linear development to the southwest of the Borough just north of the Coventry city boundary (Figure 5). It is 3.5 miles north of Coventry city centre and 2.7 miles to the centre of Bedworth. The settlement began as a hamlet of Exhall and still retains close links with this part of the Borough. There are a number of services and facilities within the settlement including a pub, church and convenience store.



For reference purposes only. No further copies may be made.

(C) Crown copyright. All rights reserved.

Figure 5: Ash Green/Neal's Green Urban Area.

Population

2,400 (2021 Census population estimate).

Borough Plan (2011-2031) planning policy designation

No Borough Plan (2011-2031) planning policy designation.

Profile: Keresley

Location

Keresley is a village located in the southwestern corner of the Borough (Figure 6). Much of the settlement falls into the city of Coventry, however, the northern section is part of Nuneaton and Bedworth Borough. The area is now split into Keresley and Keresley End. Keresley End is often referred to as Keresley Newlands or Village. The settlement has a number of services, including a church and primary school but maintains strong links to both Coventry in the south and Bedworth to the north.

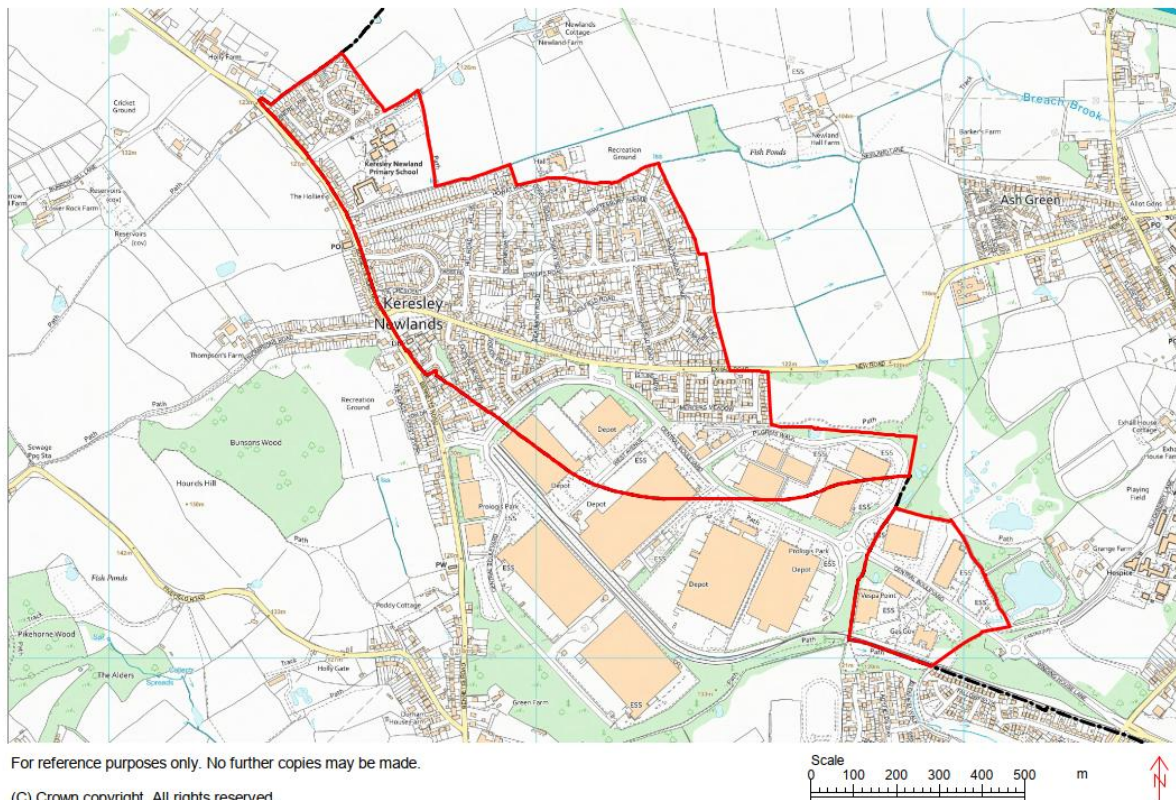


Figure 6: Keresley Urban Area.

Population

3,400 (2021 Census population estimate).

Borough Plan (2011-2031) planning policy designation

No Borough Plan (2011-2031) planning policy designation.

Settlement Size

Table 3: Settlement size (Estimated hectares (rounded up to the nearest hectare))

	Nuneaton	Bedworth	Bulkington	Ash Green/Neal's Green	Keresley
Size (ha)	2576	813	138	68	74

Settlement size can be used as a function to determine the status of a settlement. However, it should be noted that the settlement size does not always correspond to the population size. Therefore, making assumptions from this information should be done with a degree of caution.

Sustainable Settlements

The sustainability of a settlement is in part determined by the level of access to services/facilities. An important component of this is ensuring that the services remain viable and can be retained.

The sustainability of a settlement, together with the availability of sustainable sites, will impact on the ability of the settlement to accommodate further growth. However, it should be noted that where a settlement is deemed sustainable this does not mean it will necessarily be recommended to accommodate significant growth.

In order to assess the sustainability of the settlements, a number of factors were considered, these include:

- Transportation and Accessibility
- Convenience services
- Community services
- Healthcare
- Education provision
- Access to employment and services

The following sections consider each of these factors as they relate to all of the settlements. There are tables which score the settlements according to the Table 2 scoring matrix. The 'yes' or 'no' columns in the tables indicate whether or not the service is available in the settlement. Appendix 1 provides the overall settlement score.

Transportation and Accessibility

Transport links to Nuneaton and Bedworth Town Centres and other centres, such as Coventry or Leicester, are vital to the sustainability of settlements.

Public transport links are particularly important in terms of frequency and actual provision. Where there are high frequency service levels there is more of an opportunity for residents to access higher tier areas such as Nuneaton Town Centre without the use of a car. Therefore, the actual distance of a service or facility to a settlement is not necessarily the most important factor because they may not be accessible via public transport or by cycling.

Table 4 presents the scores for the settlements in relation to transport services.

Table 4: Transport and Accessibility scores

Settlement	Transport score
Nuneaton	12
Bedworth	12
Bulkington	8
Ash Green/Neal's Green	9
Keresley	7

In terms of the scoring for transport services/facilities, Nuneaton and Bedworth both score the maximum value of 10, with the other settlements falling down due to not being in close proximity to a defined on/off road cycle route. Keresley also lacks a frequent bus service to and from the settlement.

Nuneaton

	Yes	No	Score	Total amount of services
Bus stops	X		2	Multiple bus stops are provided in the settlement – please refer to the following map for details Nuneaton and Bedworth Town Map (warwickshire.gov.uk)
Bus frequency	X		2	22
Proximity to defined on/off road cycle routes	X		2	Multiple on/off road cycle routes are provided in the settlement – please refer to the following map for detail untitled

				warwickshire.gov.uk
Train stations	X		2	2
Community transport services	X		2	1
School buses	X		2	9

Bedworth

	Yes	No	Score	Total amount of services
Bus stops	X		2	Multiple bus stops are provided in the settlement – please refer to the following map for details Nuneaton and Bedworth Town Map (warwickshire.gov.uk)
Bus frequency	X		2	2
Proximity to defined on/off road cycle routes	X		2	2
Train stations	X		2	1
Community transport services	X		2	1
School buses	X		2	1

Bulkington

	Yes	No	Score	Total amount of services
Bus stops	X		2	42
Bus frequency	X		2	2
Proximity to defined on/off road cycle routes		X	0	0
Train stations		X	0	0
Community transport services	X		2	1
School buses	X		2	8

Ash Green/Neal's Green

	Yes	No	Score	Total amount of services
Bus stops	X		2	18
Bus frequency	X		2	2
Proximity to defined on/off road cycle routes		X	1	0
Train stations		X	0	0
Community transport services	X		2	1
School buses	X		2	2

Keresley

	Yes	No	Score	Total amount of services
Bus stops	X		2	21
Bus frequency		X	0	0
Proximity to defined on/off road cycle routes		X	1	0
Train stations		X	0	0
Community transport services	X		2	1
School buses	X		2	3

Although all the settlements score relatively highly there are much greater levels of variation in the amount of services provided. Nuneaton has significantly more transport services/facilities than Bedworth. This is mainly due to the amount of bus stops and cycle routes, as shown on the detailed data maps. Furthermore, all the settlements within the Borough are served by school buses and community transport services allowing children to access educational facilities and for people to travel more easily in the Borough. Nuneaton and Bedworth are the only two settlements with sustainable access to a train station. Overall, Nuneaton and Bedworth stand out in terms of the amount of transport provision that's in place.

Convenience Services

Convenience services are those services that are considered to be essential or needed on a frequent basis. For the purposes of this assessment, the list of convenience services includes:

- Post offices
- Post boxes
- Chemists/Pharmacies
- Petrol stations
- Gambling outlets
- Take-aways

Table 5 provides the total scores for the settlements in relation to convenience services.

Table 5: Convenience Services scores

Settlement	Convenience services score
Nuneaton	12
Bedworth	12
Bulkington	11
Ash Green/Neal's Green	7
Keresley	8

The settlements of Nuneaton and Bedworth score the highest number of points and have access to all the convenience services assessed as part of this study. Bulkington also scores highly, however, Ash Green/Neal's Green and Keresley score significantly lower than the rest of the settlements.

Nuneaton

	Yes	No	Score	Total amount of services
Post offices	X		2	5
Post boxes	X		2	69
Chemists/ Pharmacies	X		2	16
Petrol stations	X		2	11
Gambling outlets	X		2	12
Take-aways	X		2	70

Bedworth

	Yes	No	Score	Total amount of services
Post offices	X		2	3
Post boxes	X		2	12
Chemists/	X		2	7

Pharmacies				
Petrol stations	X		2	4
Gambling outlets	X		2	5
Take-aways	X		2	19

Bulkington

	Yes	No	Score	Total amount of services
Post offices	X		2	1
Post boxes	X		2	6
Chemists/ Pharmacies	X		2	1
Petrol stations		X	1	0
Gambling outlets	X		2	1
Take-aways	X		2	2

Ash Green/Neal's Green

	Yes	No	Score	Total amount of services
Post offices	X		2	1
Post boxes	X		2	2
Chemists/ Pharmacies		X	0	0
Petrol stations		X	1	0
Gambling outlets		X	0	0
Take-aways	X		2	1

Keresley

	Yes	No	Score	Total amount of services
Post offices	X		2	1
Post boxes	X		2	2
Chemists/ Pharmacies		X	1	0
Petrol stations		X	1	0
Gambling outlets		X	0	0
Take-aways	X		2	1

Nuneaton has the highest amount of convenience services and more services in every category that has been assessed. Although, Nuneaton and Bedworth have the same final scoring there is a marked difference in the amount of convenience services on offer within each settlement.

Bulkington has a high level of provision, only failing to provide a petrol station. However, the settlement has significantly less services than the higher scoring Bedworth. Ash Green/Neal's Green and Keresley both fail to provide numerous elements of the convenience assessment and, as a result, require their residents to travel to nearby larger settlements in order to obtain certain services, such as chemists/pharmacies and petrol stations.

Community Services

Community services are provided for the use of the community. For the purposes of this assessment, they include services such as:

- Libraries
- Mobile libraries
- Community centres
- Fire stations
- Police stations
- Community safety
- Equipped Areas for Play
- Destination parks
- Sports pitches
- Rented social housing
- Meals on Wheels
- Broadband
- Youth groups

Table 6 provides the scores for the settlements in relation to community services.

Table 6: Community Services scores

Settlement	Community services score
Nuneaton	25
Bedworth	23
Bulkington	12
Ash Green/Neal's Green	7
Keresley	12

In the same way that Nuneaton and Bedworth achieve the highest possible score for transport and convenience services, Nuneaton and Bedworth are the two highest scoring settlements in regard to community services. Bulkington and Keresley have the same level of provision with Ash Green/Neal's Green scoring the lowest.

Nuneaton

	Yes	No	Score	Total amount of services
Libraries	X		2	1
Mobile libraries	X		1	10
Community centres	X		2	7
Fire stations	X		2	1
Police stations	X		2	1
Community safety	X		2	6
Equipped Areas for Play	X		2	29
Destination parks	X		2	2
Sports pitches	X		2	4
Rented social housing	X		2	5829
Meals on Wheels	X		2	1
Broadband	X		2	1
Youth groups	X		2	1

Bedworth

	Yes	No	Score	Total amount of services
Libraries	X		2	1
Mobile libraries	X		1	5
Community centres	X		2	2
Fire stations	X		2	1
Police stations		X	0	0 (closed to public except for call phone outside)
Community safety	X		2	2
Equipped Areas for Play	X		2	6
Destination parks	X		2	1
Sports pitches	X		2	1
Rented social housing	X		2	2363
Meals on Wheels	X		2	1
Broadband	X		2	1
Youth groups	X		2	1

Bulkington

	Yes	No	Score	Total amount of services
Libraries	X		2	1
Mobile libraries		X	0	0
Community centres	X		2	1
Fire stations		X	0	0
Police stations		X	0	0
Community safety		X	0	0
Equipped Areas for Play	X		2	1
Destination parks		X	0	0
Sports pitches		X	0	0
Rented social housing	X		2	355
Meals on Wheels	X		2	1
Broadband	X		2	1
Youth groups		X	0	0

Ash Green/Neal's Green

	Yes	No	Score	Total amount of services
Libraries		X	0	0
Mobile libraries	X		1	1
Community centres		X	0	0
Fire stations		X	0	0
Police stations		X	0	0
Community safety		X	0	0
Equipped Areas for Play		X	0	0
Destination parks		X	0	0
Sports pitches		X	0	0
Rented social housing	X		2	10
Meals on Wheels	X		2	1
Broadband	X		2	1
Youth groups		X	0	0

Keresley

	Yes	No	Score	Total amount of services
Libraries	X		2	1
Mobile libraries		X	0	0
Community centres	X		2	1
Fire stations		X	0	0
Police stations		X	0	0
Community safety		X	0	0
Equipped Areas for Play	X		2	1
Destination parks		X	0	0
Sports pitches		X	0	0
Rented social housing	X		2	77
Meals on Wheels	X		2	1
Broadband	X		2	1
Youth groups		X	0	0

Again, Nuneaton has significantly more provision for community services than all the other settlements in the Borough. In total it provides 64 services (excluding the 5,829 rented social housing units), with a large percentage of this made up of Equipped Areas for Play and mobile libraries. Like with the previous assessment categories, Bedworth, despite scoring the same, has a much lower level of provision than Nuneaton. Bedworth does, however, have a significantly larger provision than the other three settlements. Bulkington, Ash Green/Neal's Green and Keresley all have a comparable level of community services.

Healthcare

Access to basic healthcare facilities can be used as a measure of sustainability. The provision of healthcare should be within a distance that people can easily travel to and via a range of transport options. In relation to this assessment the categories include:

- GP Surgeries/Doctors Health Centres
- Hospitals
- Dentists
- Opticians

Table 7 presents the healthcare scores for the settlements.

Table 7: Healthcare scores

Settlement	Healthcare score
Nuneaton	8
Bedworth	7
Bulkington	6
Ash Green/Neal's Green	2
Keresley	2

Nuneaton scores the maximum level of points for healthcare provision, meeting all the assessment categories. Bedworth and Bulkington have comparable scores, however, these are significantly higher than the remaining two settlements: Ash Green/Neal's Green and Keresley.

Nuneaton

	Yes	No	Score	Total amount of services
GP Surgeries/ Doctors Health Centres	X		2	16
Hospitals	X		2	1
Dentists	X		2	9
Opticians	X		2	7

Bedworth

	Yes	No	Score	Total amount of services
GP Surgeries/ Doctors Health Centres	X		2	5
Hospitals		X	1	0
Dentists	X		2	3
Opticians	X		2	3

Bulkington

	Yes	No	Score	Total amount of services
GP Surgeries/ Doctors Health Centres	X		2	2
Hospitals		X	0	0
Dentists	X		2	1
Opticians	X		2	1

Ash Green/Neal's Green

	Yes	No	Score	Total amount of services
GP Surgeries/ Doctors Health Centres		X	1	0
Hospitals		X	0	0
Dentists		X	1	0
Opticians		X	0	0

Keresley

	Yes	No	Score	Total amount of services
GP Surgeries/ Doctors Health Centres	X		2	2
Hospitals		X	0	0
Dentists		X	0	0
Opticians		X	0	0

Nuneaton provides almost three times as many healthcare services/facilities than the next highest scoring settlement through GP surgeries, dentists and opticians. Although Bedworth also provides these services, albeit in small numbers, it does not have access to a hospital within its settlement boundary and therefore, does not qualify for the highest number of points.

Bulkington scores similar to Bedworth but is further away from the hospital, in the Borough, making it slightly less sustainable in terms of healthcare provision. Ash Green/Neal's Green fails to provide any healthcare facilities within its settlement boundary and relies on services within other settlements. Keresley scores slightly higher than Ash Green/Neal's Green due to the fact it has provision for two GP surgeries.

It is not unusual for smaller settlements to lack significant access to healthcare facilities. This is generally due to the size of the settlement not necessarily requiring a significant healthcare provider.

Education Provision

Access to education is another good measure of sustainability. However, it is noted that with education in particular, children living in the area may not go to the local school, and therefore, the results in this section should be treated with a level of caution. The categories include:

- Nurseries

- Primary schools
- Secondary schools
- Colleges or Further Education

Table 8 presents the scores for the settlement in relation to education.

Table 8: Education Provision scores

Settlement	Education score
Nuneaton	8
Bedworth	8
Bulkington	6
Ash Green/Neal's Green	6
Keresley	5

Nuneaton and Bedworth both score the highest number of points for education provision, providing for all the assessment criteria. The settlements of Bulkington and Ash Green/Neal's Green score the same, with Keresley scoring the lowest of all the settlements with 5 out of a possible 8 points.

Nuneaton

	Yes	No	Score	Total amount of services
Nurseries	X		2	43
Primary schools	X		2	18
Secondary schools	X		2	6
Colleges or Further Education	X		2	3

Bedworth

	Yes	No	Score	Total amount of services
Nurseries	X		2	15
Primary schools	X		2	6
Secondary schools	X		2	1
Colleges or Further Education	X		2	1

Bulkington

	Yes	No	Score	Total amount of services
Nurseries	X		2	3
Primary schools	X		2	2
Secondary schools		X	1	0
Colleges or Further Education		X	1	0

Ash Green/Neal's Green

	Yes	No	Score	Total amount of services
Nurseries	X		2	1
Primary schools	X		2	1
Secondary schools	X		2	1
Colleges or Further Education		X	0	0

Keresley

	Yes	No	Score	Total amount of services
Nurseries	X		2	2
Primary schools	X		2	1
Secondary schools		X	1	0
Colleges or Further Education		X	0	0

Nuneaton has a high level of provision for all the education assessment categories and whilst Bedworth also provides these facilities, there is only one secondary school and college of further education within the settlement. Furthermore, although Bulkington is able to provide numerous facilities for infants, namely nurseries and primary schools, it does not have a secondary school within its settlement boundary, reducing its score. Ash Green/Neal's Green and Keresley are not within sustainable distances from colleges/further education establishments. However, they do have nurseries, primary schools and secondary schools within their settlement boundaries or within a sustainable distance.

Location of Employment Opportunities and Services

This section looks at the provision of employment opportunities and access to defined shopping areas. For the purposes of this assessment the categories include:

- Town Centres
- Defined District Centres
- Industrial Estates

Table 9 provides the scores for the settlements in relation to employment and defined shopping areas.

Table 9: Employment Opportunities and Services scores

Settlement	Employment Opportunities and Services score
Nuneaton	6
Bedworth	4
Bulkington	4
Ash Green/Neal's Green	1
Keresley	2

Nuneaton achieves the maximum score for employment opportunities and services whilst the remaining four settlements have fewer services available.

Nuneaton

	Yes	No	Score	Total amount of services
Town Centres	X		2	1
Defined District Centres	X		2	5
Industrial Estates	X		2	28

Bedworth

	Yes	No	Score	Total amount of services
Town Centres	X		2	1
Defined District Centres		X	0	0
Industrial Estates	X		2	5

Bulkington

	Yes	No	Score	Total amount of services
Town Centres		X	1	0
Defined District Centres	X		2	1
Industrial Estates		X	1	0

Ash Green/Neal's Green

	Yes	No	Score	Total amount of services
Town Centres		X	0	0
Defined District Centres		X	0	0
Industrial Estates		X	1	0

Keresley

	Yes	No	Score	Total amount of services
Town Centres		X	0	0
Defined District Centres		X	0	0
Industrial Estates	X		2	2

Nuneaton and Bedworth both have designated town centres, whilst only Bulkington is close enough to be classed as within a suitable and sustainable distance of these two settlements. Nuneaton has numerous defined District Centres whilst Bedworth does not have this type of designation. This is partly due to the size of the settlement, which is not large enough to support further District Centres on top of the existing Town Centre. Bulkington, on the other hand, does have a designated District Centre, which reflects the settlement's size and population.

Nuneaton, Bedworth and Keresley have industrial estates within their settlement boundaries, whilst Bulkington and Ash Green/Neal's Green only have them in close proximity and therefore, have less provision. As with the previous assessment areas, Nuneaton has significantly more provision for services than the other settlements, whilst Bedworth also has a much higher level of provision than Bulkington, Ash Green/Neal's Green and Keresley.

5. Conclusion and Recommendations

Table 10 presents the total scores for Nuneaton, Bedworth, Bulkington, Ash Green/Neal's Green and Keresley after their assessment against each of the sustainability scoring criteria.

Table 10: Sustainability scores

Settlement	Sustainability score
Nuneaton	71
Bedworth	66
Bulkington	47
Ash Green/Neal's Green	32
Keresley	36

The overall scores for the settlement hierarchy indicates that Nuneaton is considered more sustainable than the rest of the settlements, in the Borough, by offering a greater quantity of services and facilities. There are some clear similarities in terms of the facilities and services on offer between Nuneaton and Bedworth, with Bedworth only falling down by not having a police station (open to the public) or defined District Centre within its settlement boundary or within a sustainable distance. Despite the majority of facilities and services being on offer in Bedworth, it has far fewer than Nuneaton.

Bulkington has significantly less services than Bedworth but scores a much higher sustainability score than Ash Green/Neal's Green and Keresley, which have roughly the same level of provision. This would indicate that Bulkington is a sustainable rural settlement and also more sustainable than Ash Green/Neal's Green and Keresley.

Overall, the total scores reflect the level of service provision within each settlement. Nuneaton and Bedworth, as towns, are considered to be the most sustainable of all the settlements in the Borough. Bulkington can be considered a sustainable settlement also, whereas Ash Green/Neal's Green and Keresley are considered less sustainable settlements, when compared to Bulkington.

The audit of services and facilities and the analysis of contextual data has demonstrated the respective sustainability of the settlements within the Borough. This information has been used to draw up a settlement hierarchy which should be considered as a suitable approach for the Borough Plan Review to progress with.

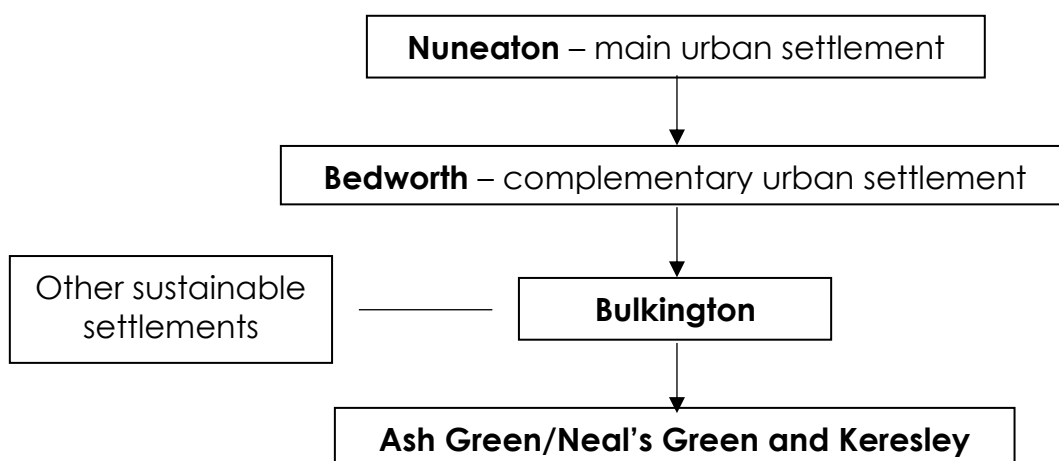
6. Establishing a Settlement Hierarchy

The assessment of sustainability demonstrates that Nuneaton and Bedworth offer the highest range of services and facilities, many of which are accessed by the residents of the Borough.

It should be noted that this study has not looked at the capacity of all the settlements to expand, nor has it identified whether services/facilities are at capacity. Therefore, if growth is to be considered, in any of the settlements, further work should be carried out.

Figure 7 sets out the recommended settlement hierarchy for the Borough.

Figure 7: Settlement Hierarchy



The recommended settlement hierarchy places Nuneaton as the main urban settlement within the Borough. Nuneaton scores the highest number of points, out of all the settlements, ahead of Bedworth. As well as scoring the highest sustainability score, Nuneaton also has over two times the number of facilities and services in Bedworth. Bedworth, as a defined town, clearly ranks second in the hierarchy. Bulkington is ranked ahead of Ash Green/Neal's Green and Keresley as it offers a more diverse range of services and facilities than those below it, and therefore, is classified as a sustainable settlement. As a result of this, Bulkington is ranked third in the hierarchy with Ash Green/Neal's Green and Keresley position below.

Appendix 1 – Settlement Scores

Nuneaton

	Yes	No	Score
Bus stops	X		2
Bus frequency	X		2
Proximity to defined on/off road cycle routes	X		2
Train stations	X		2
Community transport services	X		2
School buses	X		2
Post offices	X		2
Post boxes	X		2
Chemists/Pharmacies	X		2
Petrol stations	X		2
Gambling outlets	X		2
Take-aways	X		2
Libraries	X		2
Mobile libraries	X		1
Community centres	X		2
Fire stations	X		2
Police stations	X		2
Community safety	X		2
Equipped Areas for Play	X		2
Destination parks	X		2
Sports pitches	X		2
Rented social housing	X		2
Meals on Wheels	X		2
Broadband	X		2
Youth groups	X		2
GP Surgeries/Doctors Health Centres	X		2
Hospitals	X		2
Dentists	X		2
Opticians	X		2
Nurseries	X		2
Primary schools	X		2
Secondary schools	X		2
Colleges or Further Education	X		2
Town Centres	X		2
Defined District Centres	X		2
Industrial Estates	X		2
Total			71

Bedworth

	Yes	No	Score
Bus stops	X		2
Bus frequency	X		2
Proximity to defined on/off road cycle routes	X		2
Train stations	X		2
Community transport services	X		2
School buses	X		2
Post offices	X		2
Post boxes	X		2
Chemists/Pharmacies	X		2
Petrol stations	X		2
Gambling outlets	X		2
Take-aways	X		2
Libraries	X		2
Mobile libraries	X		1
Community centres	X		2
Fire stations	X		2
Police stations		X	0
Community safety	X		2
Equipped Areas for Play	X		2
Destination parks	X		2
Sports pitches	X		2
Rented social housing	X		2
Meals on Wheels	X		2
Broadband	X		2
Youth groups	X		2
GP Surgeries/Doctors Health Centres	X		2
Hospitals		X	1
Dentists	X		2
Opticians	X		2
Nurseries	X		2
Primary schools	X		2
Secondary schools	X		2
Colleges or Further Education	X		2
Town Centres	X		2
Defined District Centres		X	0
Industrial Estates	X		2
Total			66

Bulkington

	Yes	No	Score
Bus stops	X		2
Bus frequency	X		2
Proximity to defined on/off road cycle routes		X	0
Train stations		X	0
Community transport services	X		2
School buses	X		2
Post offices	X		2
Post boxes	X		2
Chemists/Pharmacies	X		2
Petrol stations		X	1
Gambling outlets	X		2
Take-aways	X		2
Libraries	X		2
Mobile libraries		X	0
Community centres	X		2
Fire stations		X	0
Police stations		X	0
Community safety		X	0
Equipped Areas for Play	X		2
Destination parks		X	0
Sports pitches		X	0
Rented social housing	X		2
Meals on Wheels	X		2
Broadband	X		2
Youth groups		X	0
GP Surgeries/Doctors Health Centres	X		2
Hospitals		X	0
Dentists	X		2
Opticians	X		2
Nurseries	X		2
Primary schools	X		2
Secondary schools		X	1
Colleges or Further Education		X	1
Town Centres		X	1
Defined District Centres	X		2
Industrial Estates		X	1
Total			47

Ash Green/Neal's Green

	Yes	No	Score
Bus stops	X		2
Bus frequency	X		2
Proximity to defined on/off road cycle routes		X	1
Train stations		X	0
Community transport services	X		2
School buses	X		2
Post offices	X		2
Post boxes	X		2
Chemists/Pharmacies		X	0
Petrol stations		X	1
Gambling outlets		X	0
Take-aways	X		2
Libraries		X	0
Mobile libraries	X		1
Community centres		X	0
Fire stations		X	0
Police stations		X	0
Community safety		X	0
Equipped Areas for Play		X	0
Destination parks		X	0
Sports pitches		X	0
Rented social housing	X		2
Meals on Wheels	X		2
Broadband	X		2
Youth groups		X	0
GP Surgeries/Doctors Health Centres		X	1
Hospitals		X	0
Dentists		X	1
Opticians		X	0
Nurseries	X		2
Primary schools	X		2
Secondary schools	X		2
Colleges or Further Education		X	0
Town Centres		X	0
Defined District Centres		X	0
Industrial Estates		X	1
Total			32

Keresley

	Yes	No	Score
Bus stops	X		2
Bus frequency		X	0
Proximity to defined on/off road cycle routes		X	1
Train stations		X	0
Community transport services	X		2
School buses	X		2
Post offices	X		2
Post boxes	X		2
Chemists/Pharmacies		X	1
Petrol stations		X	1
Gambling outlets		X	0
Take-aways	X		2
Libraries	X		2
Mobile libraries		X	0
Community centres	X		2
Fire stations		X	0
Police stations		X	0
Community safety		X	0
Equipped Areas for Play	X		2
Destination parks		X	0
Sports pitches		X	0
Rented social housing	X		2
Meals on Wheels	X		2
Broadband	X		2
Youth groups		X	0
GP Surgeries/Doctors Health Centres	X		2
Hospitals		X	0
Dentists		X	0
Opticians		X	0
Nurseries	X		2
Primary schools	X		2
Secondary schools		X	1
Colleges or Further Education		X	0
Town Centres		X	0
Defined District Centres		X	0
Industrial Estates	X		2
Total			36