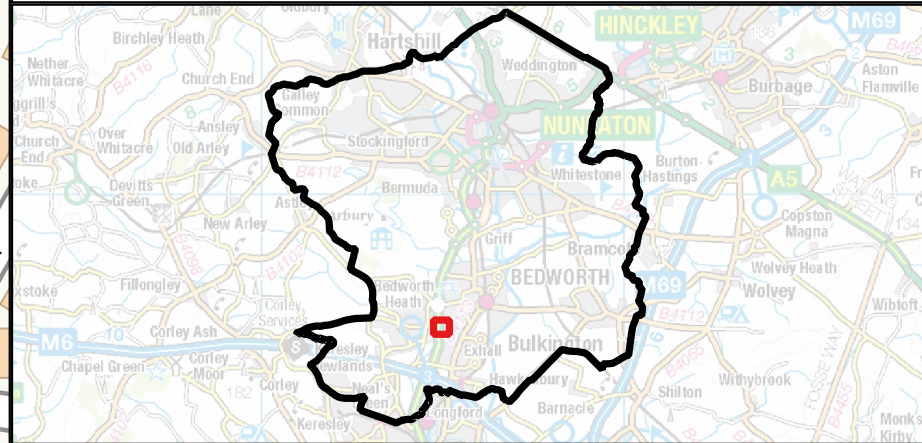
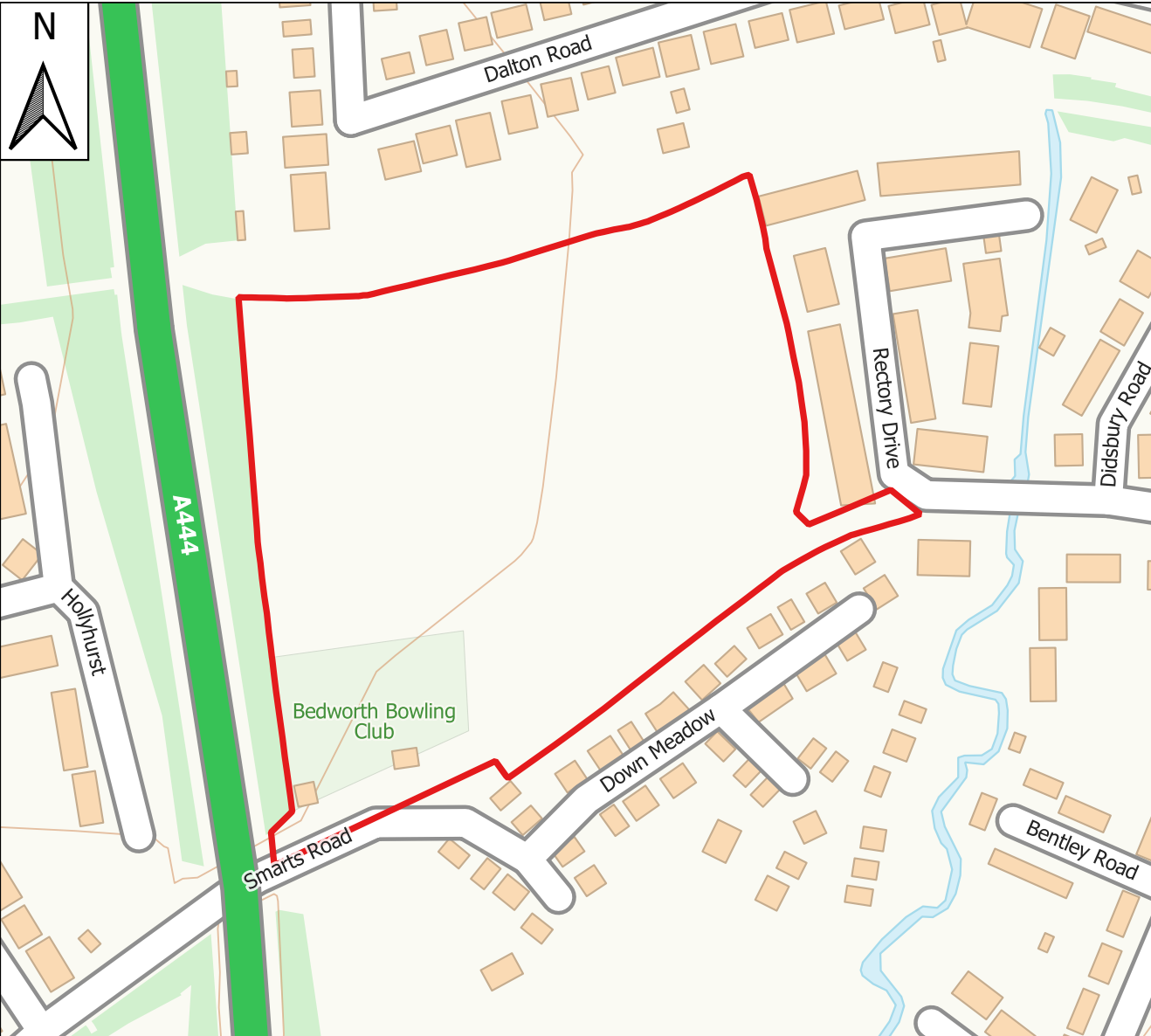


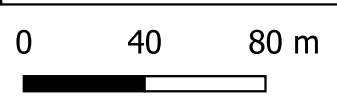
NUNEATON AND BEDWORTH BOROUGH COUNCIL LEVEL 2 STRATEGIC FLOOD RISK ASSESSMENT



Note: All layers are turned off by default. Click the box next to the layer of interest to turn on.



Contains OS data © Crown copyright and database right 2023. Contains Environment Agency information © Environment Agency and/or database rights. This document is the property of Jeremy Benn Associates Ltd. It shall not be reproduced in whole or in part, not disclosed to a third party, without the permission of Jeremy Benn Associates Ltd.



- EXH-1
- Nuneaton & Bedworth Borough
- Main Rivers
- All Watercourses
- EA LIDAR 1m DTM (m)**
- 105.5
- 94.9

- Flood Defences**
- Embankment
- High Ground
- Wall
- Historic Flooding**
- EA Historic Flood Map
- Reservoir Flood Extents**
- Dry Day
- Wet Day

- EA Flood Warning and Alert Areas**
- Flood Warning Areas
- Flood Alert Areas
- Fluvial Flood Extents**
- 3.3% AEP + 21% CC
- 3.3% AEP + 32% CC
- 3.3% AEP + 59% CC
- 1% AEP + 21% CC
- 1% AEP + 32% CC
- 1% AEP + 59% CC

- Fluvial Depth (m)**
- 3.3% AEP + 21% CC
- 3.3% AEP + 32% CC
- 3.3% AEP + 59% CC
- 1% AEP + 21% CC
- 1% AEP + 32% CC
- 1% AEP + 59% CC
- ≤ 0.10
- 0.10 - 0.50
- 0.50 - 1.00
- 1.00 - 1.50
- 1.50 - 2.00
- > 2.00

- Fluvial Velocity (m/s)**
- 3.3% AEP + 21% CC
- 3.3% AEP + 32% CC
- 3.3% AEP + 59% CC
- 1% AEP + 21% CC
- 1% AEP + 32% CC
- 1% AEP + 59% CC
- ≤ 0.25
- 0.25 - 0.50
- 0.50 - 1.00
- 1.00 - 2.00
- > 4.00

- Fluvial Hazard Classification**
- 3.3% AEP + 21% CC
- 3.3% AEP + 32% CC
- 3.3% AEP + 59% CC
- 1% AEP + 21% CC
- 1% AEP + 32% CC
- 1% AEP + 59% CC
- Very low hazard
- Danger for some
- Danger for most
- Danger for all

- SW Climate Change Extents**
- 3.3% AEP + 25% CC
- 3.3% AEP + 35% CC
- 35% CC
- 1% AEP + 25% CC
- 25% CC
- 1% AEP + 40% CC

- SW Climate Change Depth (m)**
- 3.3% AEP + 25% CC
- 3.3% AEP + 35% CC
- 1% AEP + 25% CC
- 1% AEP + 40% CC
- ≤ 0.15
- 0.15 - 0.30
- 0.30 - 0.60
- 0.60 - 0.90
- 0.90 - 1.20
- > 1.20

- JBA GW Map GW depth below surface**
- <0.025m
- 0.025 - 0.5m
- 0.5 - 5.0m
- >5.0m
- No risk

- SW Climate Change Velocity (m/s)**
- 3.3% AEP + 25% CC
- 3.3% AEP + 35% CC
- 1% AEP + 25% CC
- 1% AEP + 40% CC
- ≤ 0.25
- 0.25 - 0.50
- 0.50 - 1.00
- 1.00 - 2.00
- > 2.00

- SW Climate Change Hazard Classification**
- 3.3% AEP + 25% CC
- 3.3% AEP + 35% CC
- 1% AEP + 25% CC
- 1% AEP + 40% CC
- Very low hazard
- Danger for some
- Danger for most
- Danger for all

- EA AStGWF Map**
- ≥ 75%
- ≥ 50% <75%
- ≥ 25% <50%
- < 25%
- No risk